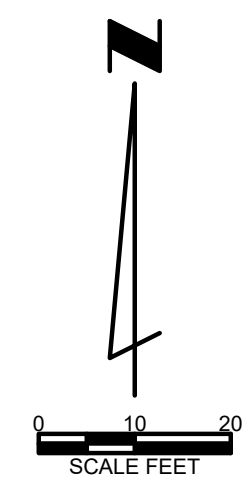
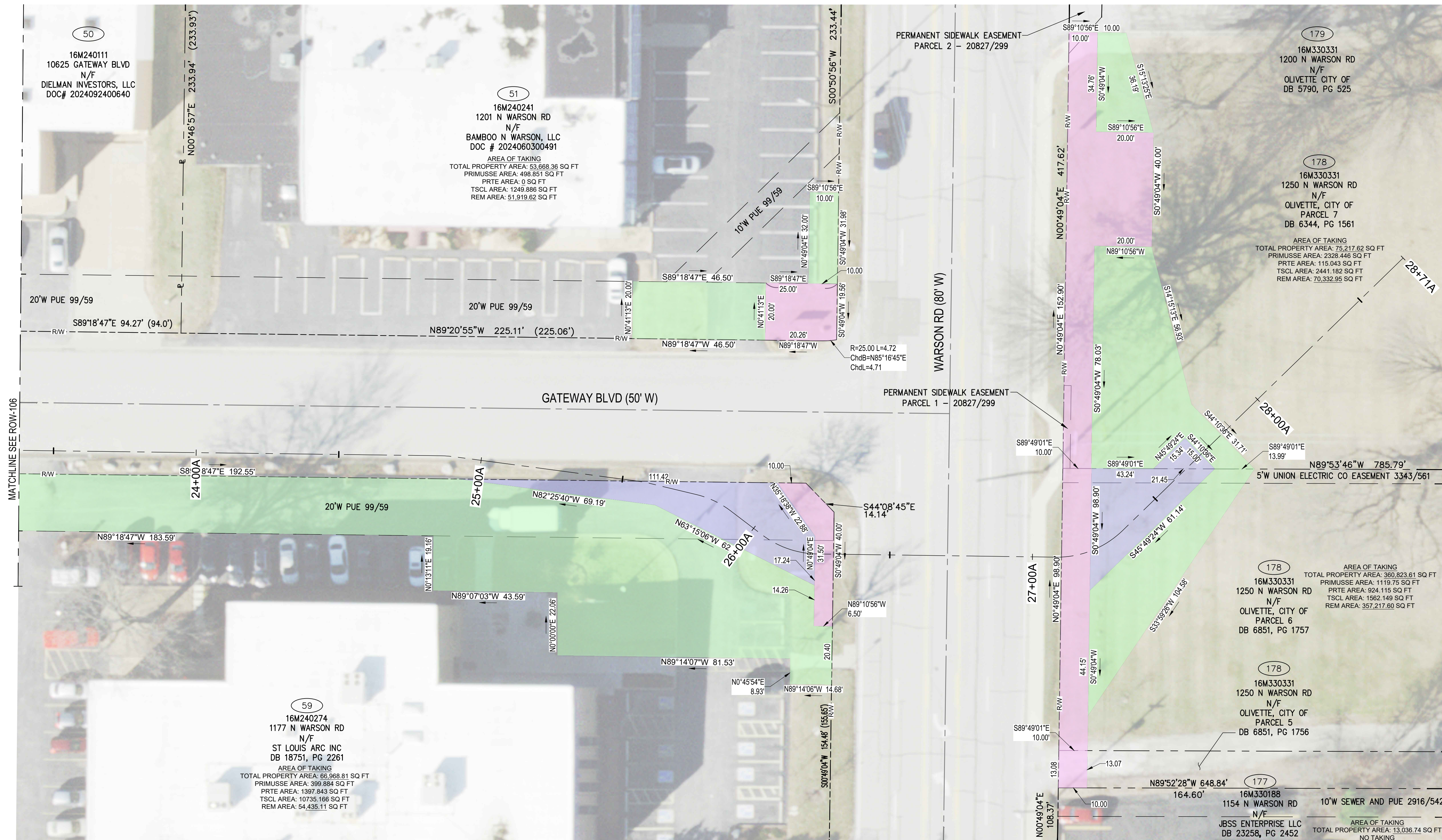


Plotted on: 4/23/2026 11:21:17 AM by mbeard

Path: P:\GRG\2023089603\dwg\2025599F\C-ROW-102.dwg



- PROPOSED ROW LEGEND**
- PERMANENT ROADWAY IMPROVEMENT, MAINTENANCE, UTILITY, SEWER, AND SIDEWALK EASEMENT (PRIMUSSE)
 - PERMANENT "RECREATIONAL TRAIL EASEMENT" (PRTE)
 - TEMPORARY SLOPE CONSTRUCTION LICENSE (TSCL)

1 ROW PLAN
SCALE: 1" = 20'

RETTZ & JENS, INC.
CONSULTING ENGINEERS
1055 Corporate Square Drive
St. Louis, Missouri 63132
314.993.4132
Missouri Professional Engineering Corporation License No. 000215

Great Rivers Greenway District
3745 Foundry Way, Suite 253
Saint Louis, MO 63110
314.436.7009

**Centennial Greenway At 39 North
599F - Gateway Blvd / Research Blvd:
Baur To Warson**

**BEFORE YOU
DIG - DRILL - BLAST**
1-800-344-7483
(TOLL FREE)
MISSOURI ONE CALL
SYSTEM, INC.

NO.	ISSUED FOR	DATE
1	MODOT Review	##/##/###

DESIGNED BY: M.J.W.
DRAWN BY: M.G.B.
CHECKED BY: E.J.K.

THE ENGINEER WHOSE SIGNATURE AND PERSONAL SEAL APPEAR HEREON ASSUMES RESPONSIBILITY ONLY FOR WHAT APPEARS ON THIS PAGE AND DISCLAIMS (PURSUANT TO SECTION 327.411 RSMO) ANY RESPONSIBILITY FOR ALL OTHER PLANS, SPECIFICATIONS, ESTIMATES, REPORTS OR OTHER DOCUMENTS OR INSTRUMENTS NOT SEALED BY THE UNDERSIGNED ENGINEER RELATING TO OR INTENDED TO BE USED FOR ANY PART OR PARTS OF THE PROJECT TO WHICH THIS PAGE REFERS.

**THIS MEDIA
SHOULD NOT BE
CONSIDERED
A CERTIFIED
DOCUMENT**

**PRELIMINARY
FOR INFORMATION ONLY
NOT FOR CONSTRUCTION**

DATE: Eric Karch, P.E.
Professional Engineer
License No.: 2007005040

DRAWING TITLE
Plan

PROJECT #: 2023089603
SHEET NUMBER

ROW-107

TIP #: 7989A-26
FED ID: CRF-480 (6/7)
MSD RECORD: 26MSD-XXXXX
BASE MAP: 16M-17M