

REGIONAL CONTEXT

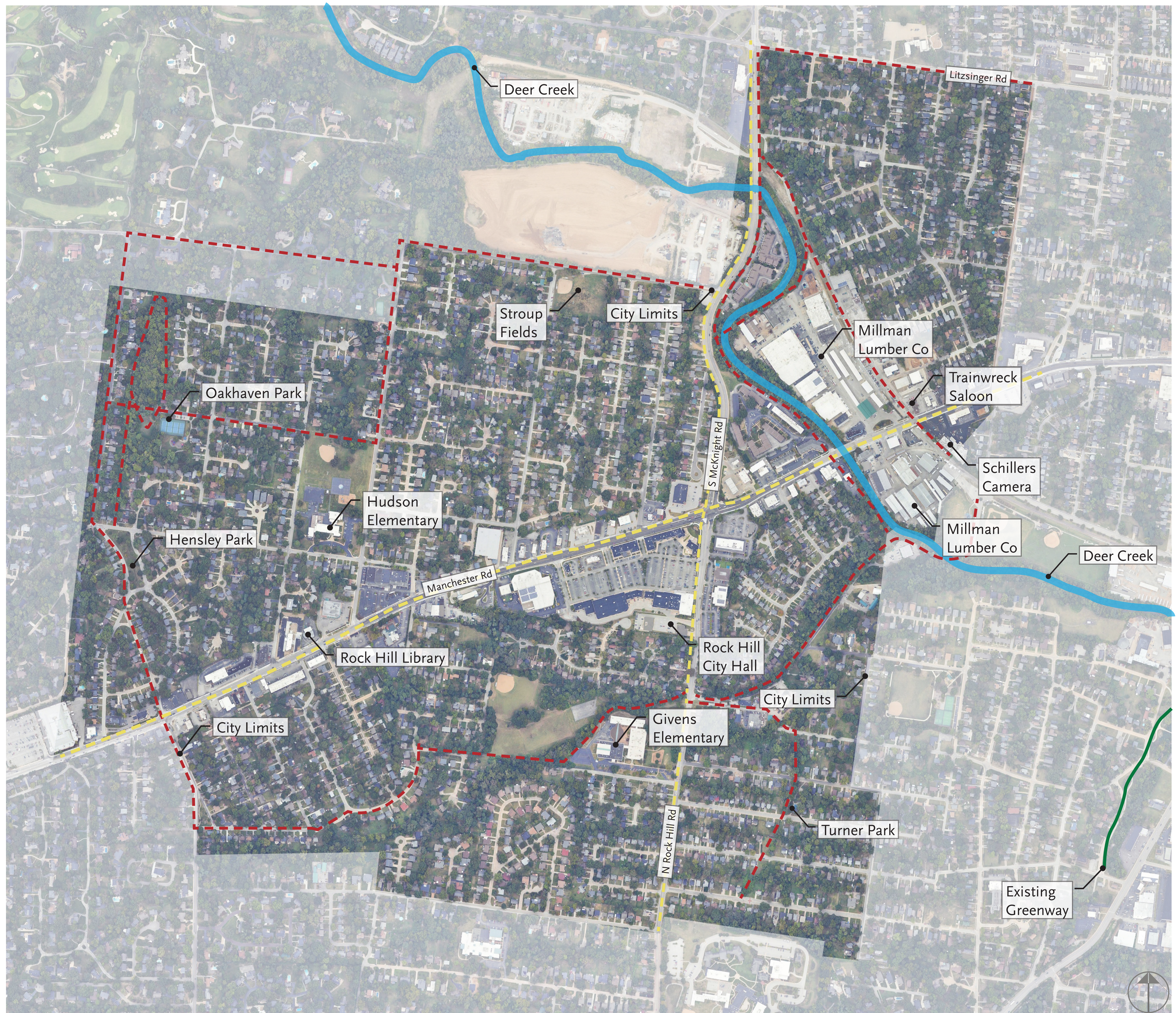
Project Timeline

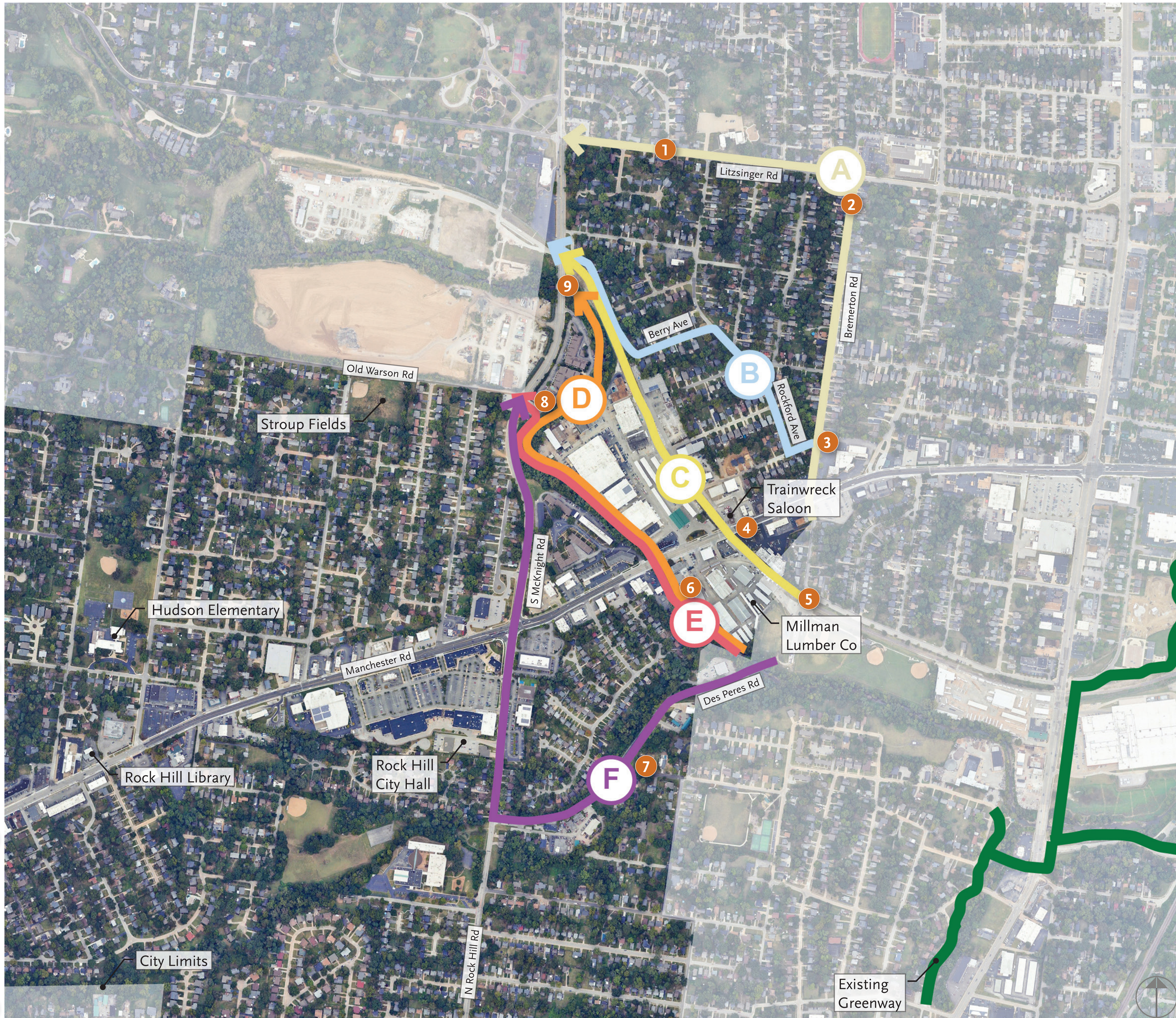
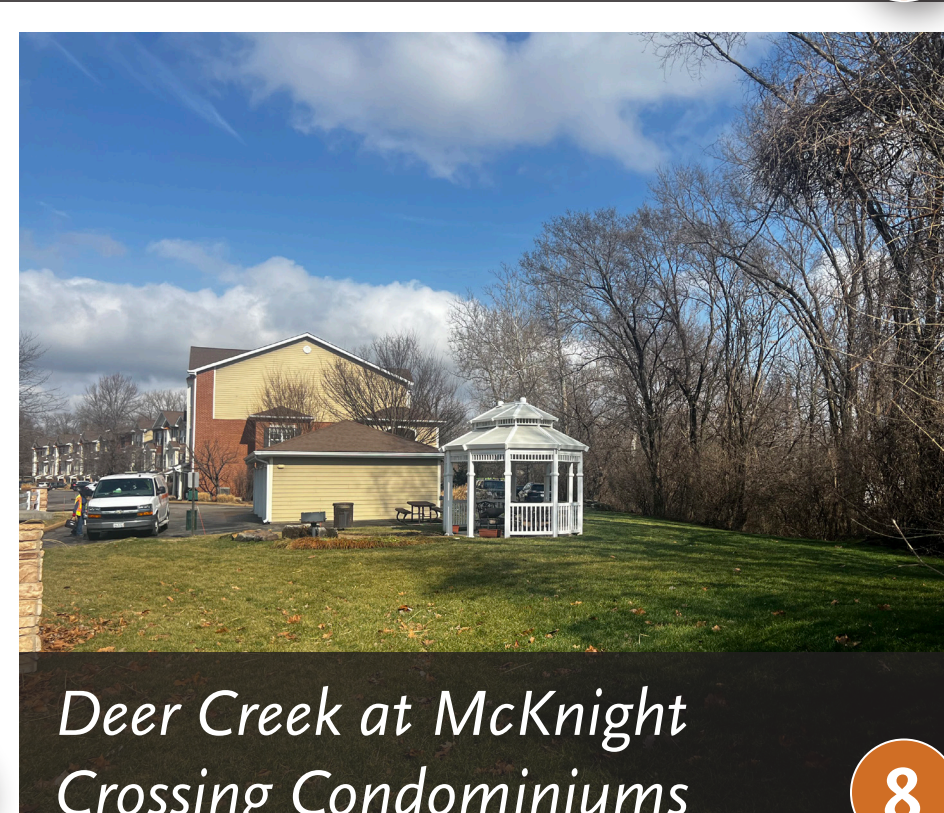
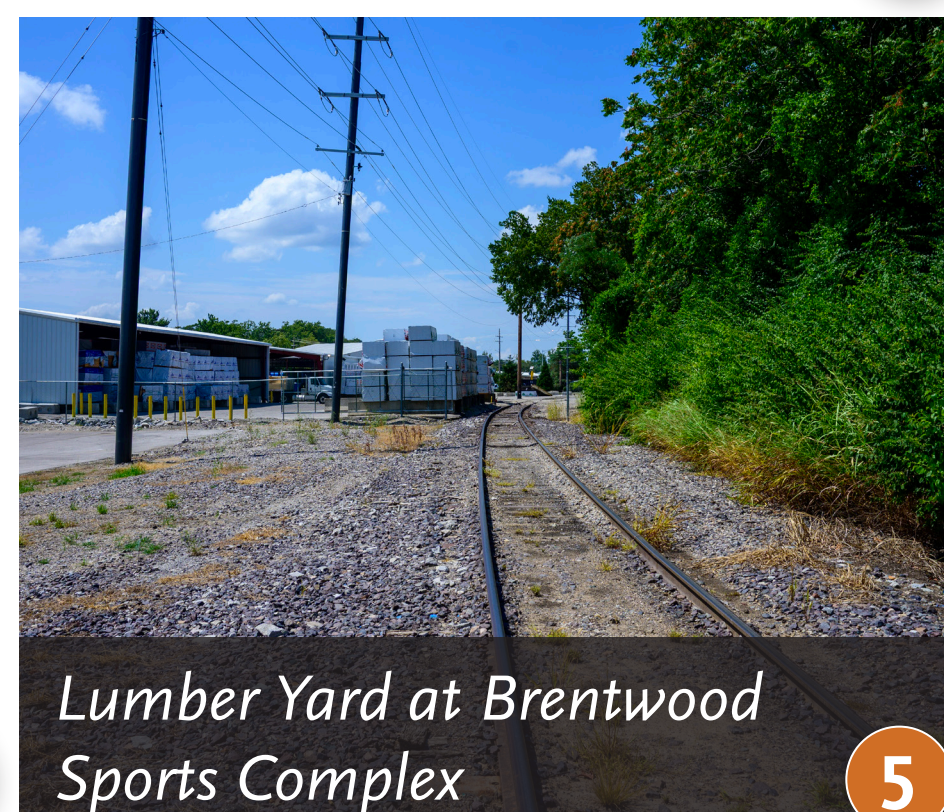
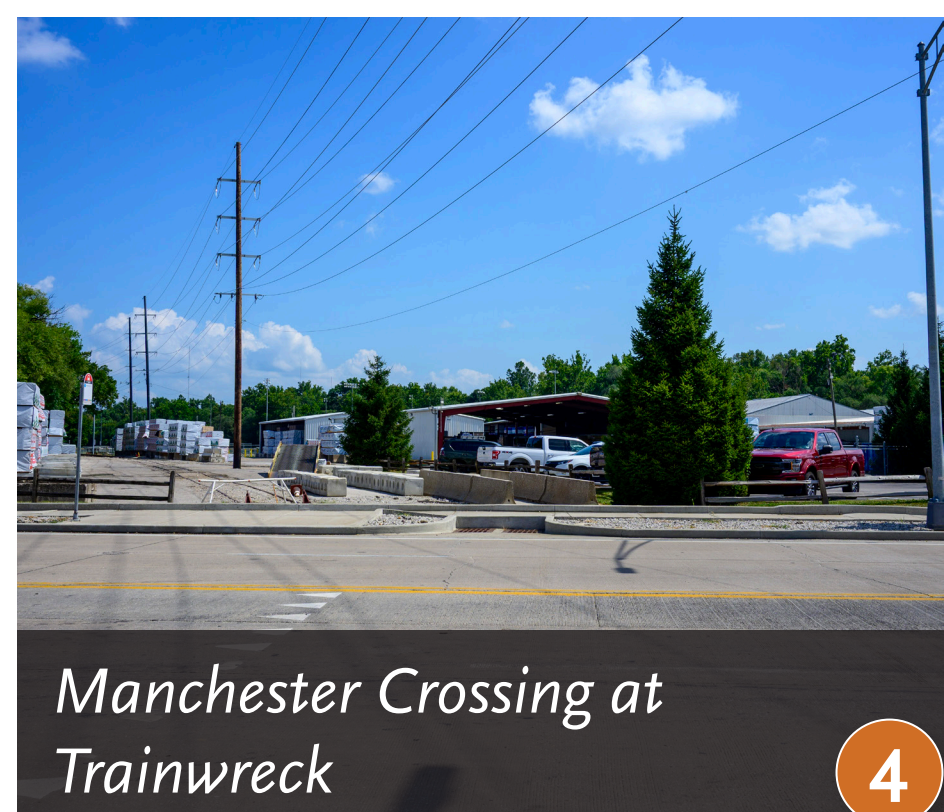
- 1 CORRIDOR REVIEW** *Oct. - Nov. 2025*
 - Conduct site visits / study area tours
 - Review of maps, past municipal projects and plans, and key considerations
 - Hold conversations with partners and stakeholder groups
- 2 SEGMENT IDENTIFICATION** *Dec. 25- Feb. 2026*
 - Explore possible greenway segment routes
 - Study property, floodplain, and infrastructure factors
 - Hold Open Houses and partner discussions to review segment options
- 3 SEGMENT REFINEMENT** *Mar. - April 2026*
 - Refine alignment options
 - Explore segment layouts and costs
 - Review refined segments with partners & stakeholder groups
- 4 PREFERRED ALTERNATIVES** *April - June 2026*
 - Evaluate segments using shared project goals
 - Identify a preferred alignment and alternates
 - Hold Open Houses and partner discussions to review preferred alignment and alternates
- 5 FINAL ALIGNMENT STUDY** *June - July 2026*
 - Finalize alignments and key details together
 - Refine costing and phasing approach
 - Work with project partners to determine next steps



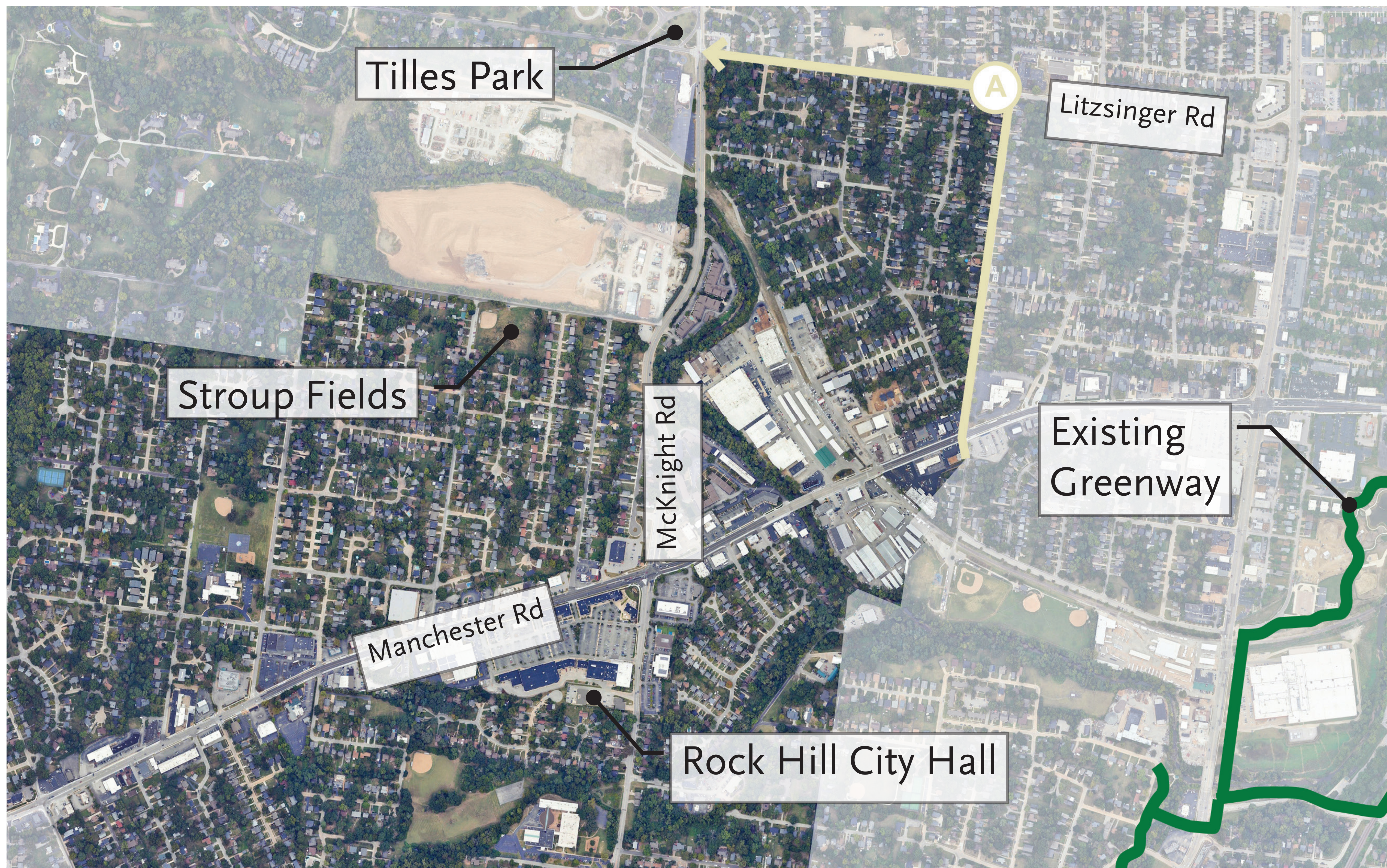
KEY

- Existing GRG Greenway
- Proposed Greenway Ring Components, per Bicycle and Pedestrian Master Plan dated April 2014 (Not GRG)
- Proposed City Center Components, per Bicycle and Pedestrian Master Plan dated April 2014 (Not GRG)
- Deer Creek





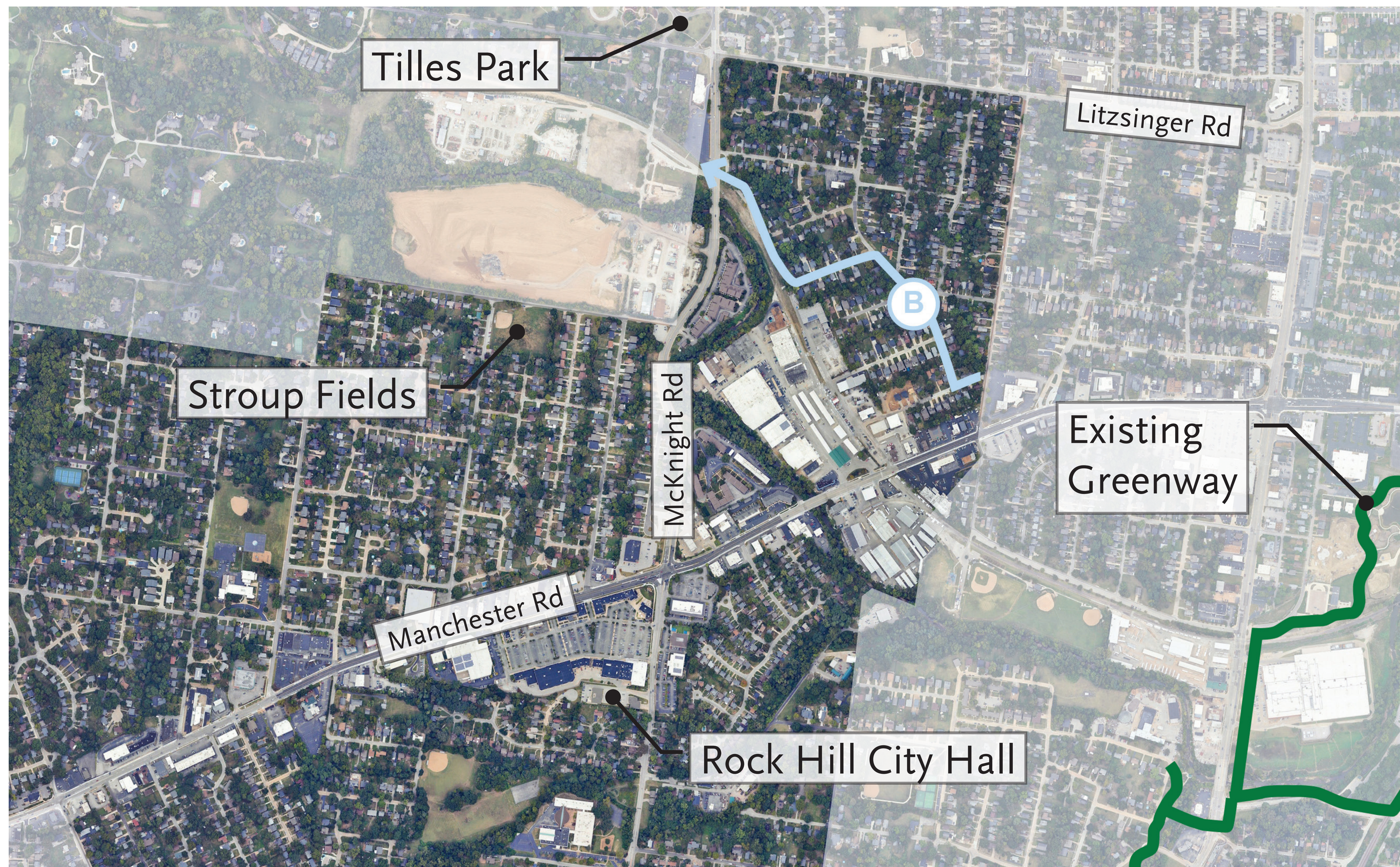
Segment A



Considerations:

- Accessible from neighborhood along Bremerton
- Passes Mt. Calvary Park and Tilles Park
- Crosses McKnight at Litzsinger intersection

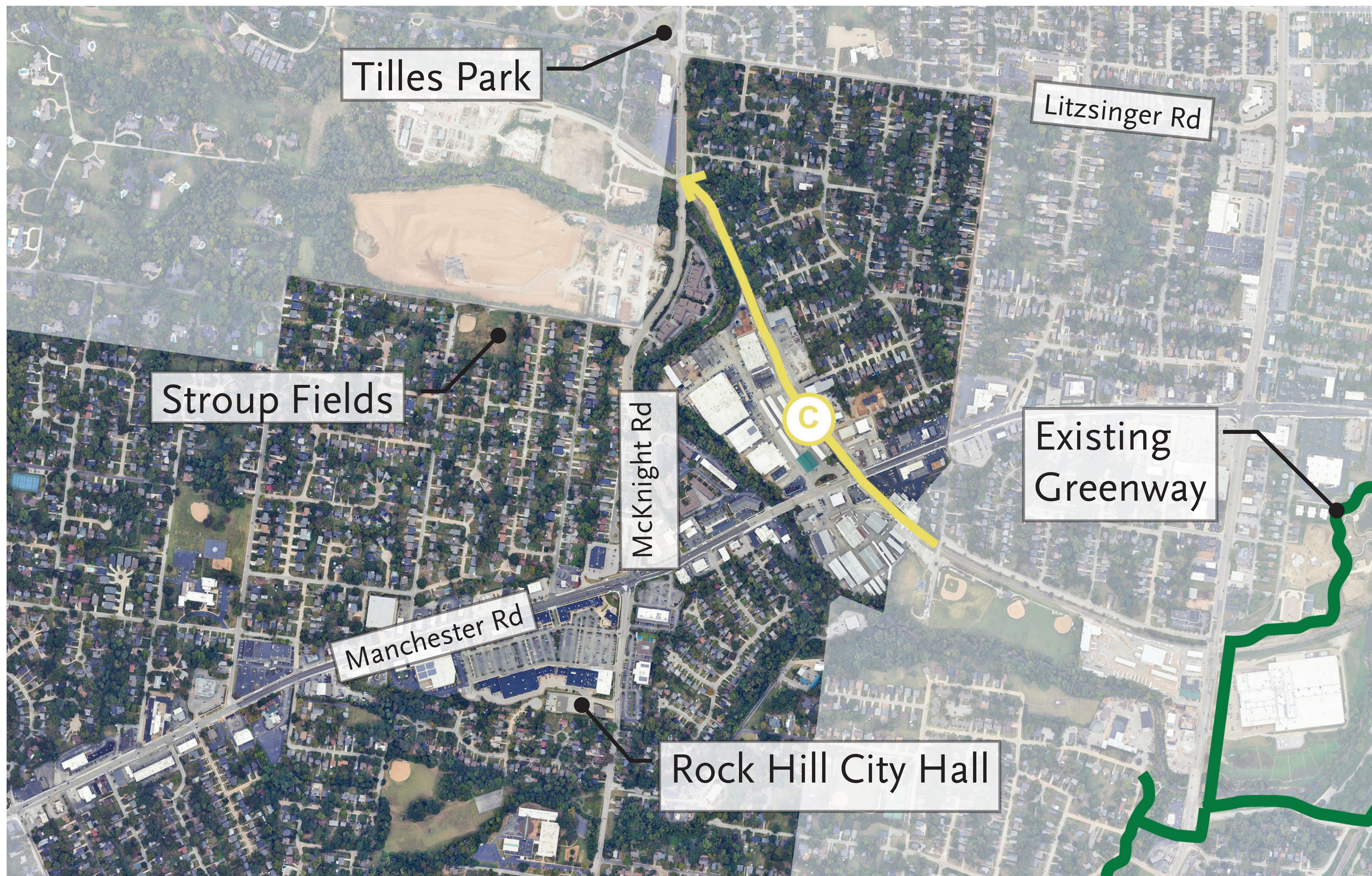
Segment B



Considerations:

- Ameren easement for a portion of the alignment
- Provides multiple connection opportunities to Litzsinger and Tilles Park

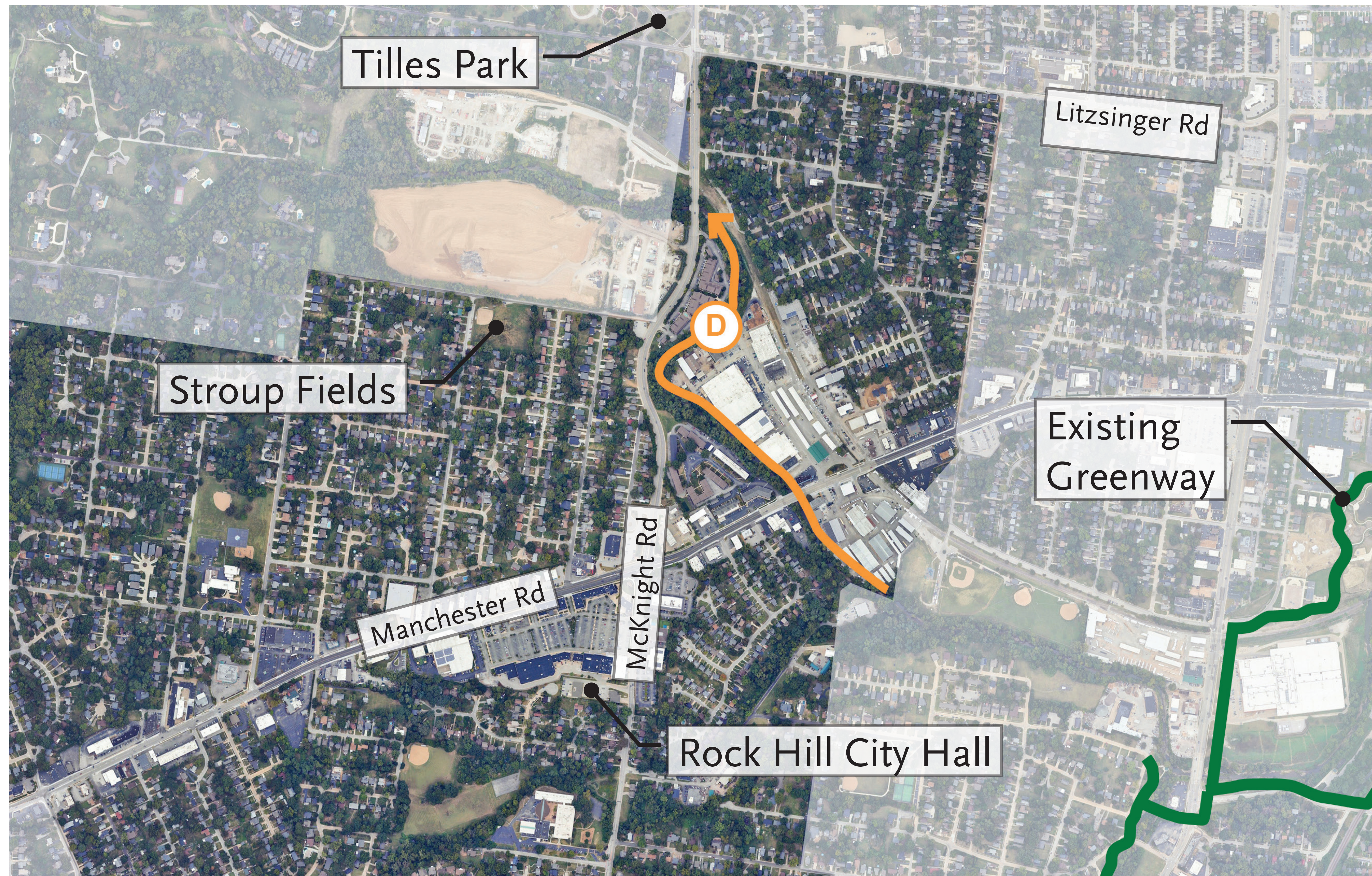
Segment C



Considerations:

- Direct route along railroad and Ameren corridor
- Limited interface with residential property /streets

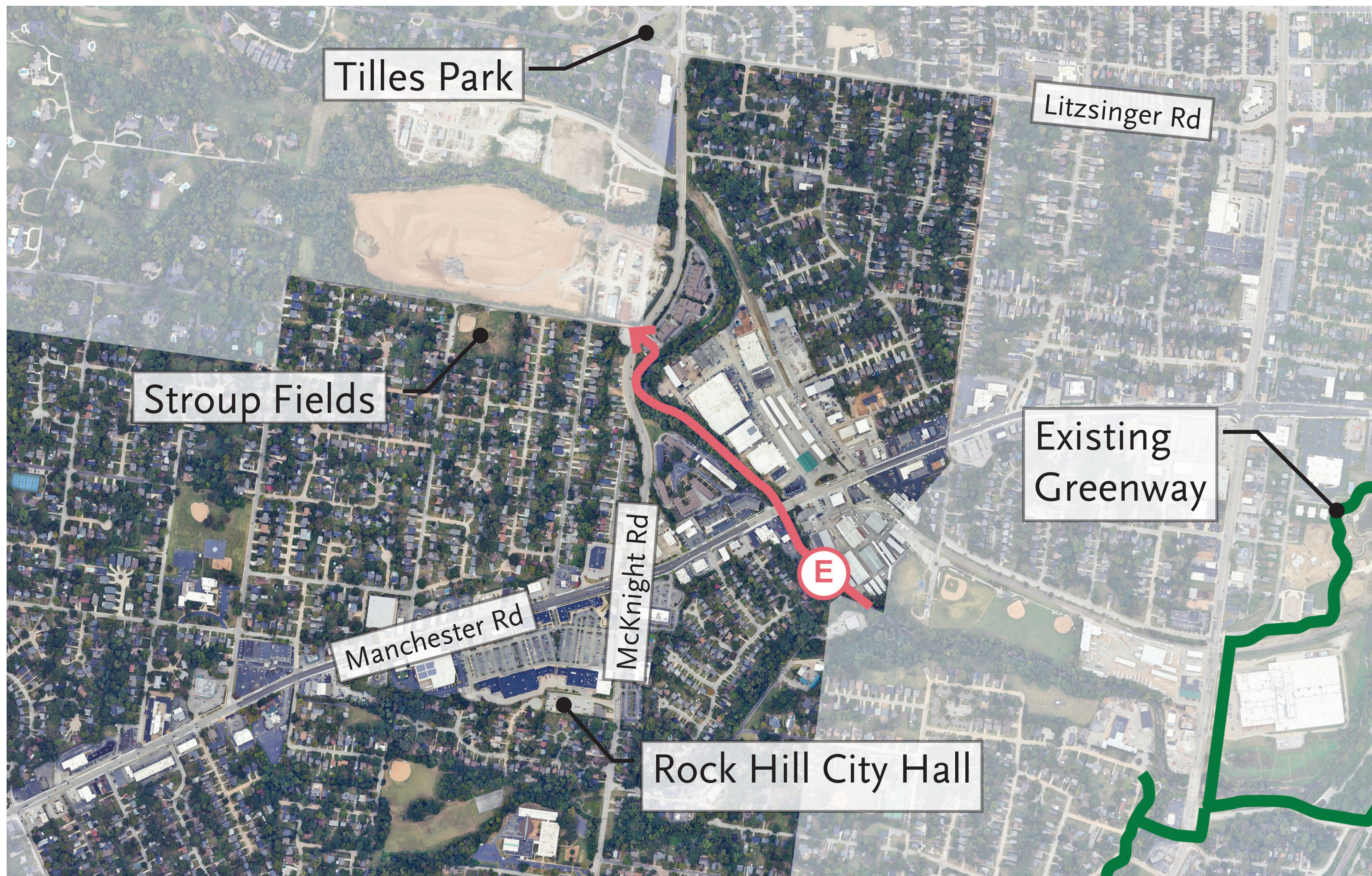
Segment D



Considerations:

- Maintains Deer Creek alignment
- Provides multiple connection opportunities to Litzsinger and Tilles Park

Segment E



Considerations:

- Potential for intersection crossing at McKnight Road and Old Warson Road
- Majority of alignment is off road

Segment F



Considerations:

- Opportunity for more Rock Hill connections close to the city core
- Manchester crossing at McKnight intersection