

REGIONAL CONTEXT

Project Timeline

- 1 CORRIDOR REVIEW** *Oct. - Nov. 2025*
 - Conduct site visits / study area tours
 - Review of maps, past municipal projects and plans, and key considerations
 - Hold conversations with partners and stakeholder groups
- 2 SEGMENT IDENTIFICATION** *Dec. 25- Feb. 2026*
 - Explore possible greenway segment routes
 - Study property, floodplain, and infrastructure factors
 - Hold Open Houses and partner discussions to review segment options
- 3 SEGMENT REFINEMENT** *Mar. - April 2026*
 - Refine alignment options
 - Explore segment layouts and costs
 - Review refined segments with partners & stakeholder groups
- 4 PREFERRED ALTERNATIVES** *April - June 2026*
 - Evaluate segments using shared project goals
 - Identify a preferred alignment and alternates
 - Hold Open Houses and partner discussions to review preferred alignment and alternates
- 5 FINAL ALIGNMENT STUDY** *June - July 2026*
 - Finalize alignments and key details together
 - Refine costing and phasing approach
 - Work with project partners to determine next steps



KEY

- Existing GRG Greenway (none present)
- Existing Ladue Trail (Not GRG)
- Proposed Ladue Trail (Not GRG)
- Deer Creek





McCarthy Site Drive 1



McCarthy Site East 2



Litzinger Road Ecology Center 3



Tall Timbers Drive 4



Log Cabin Lane 5



Deer Creek Preserve Trail 6



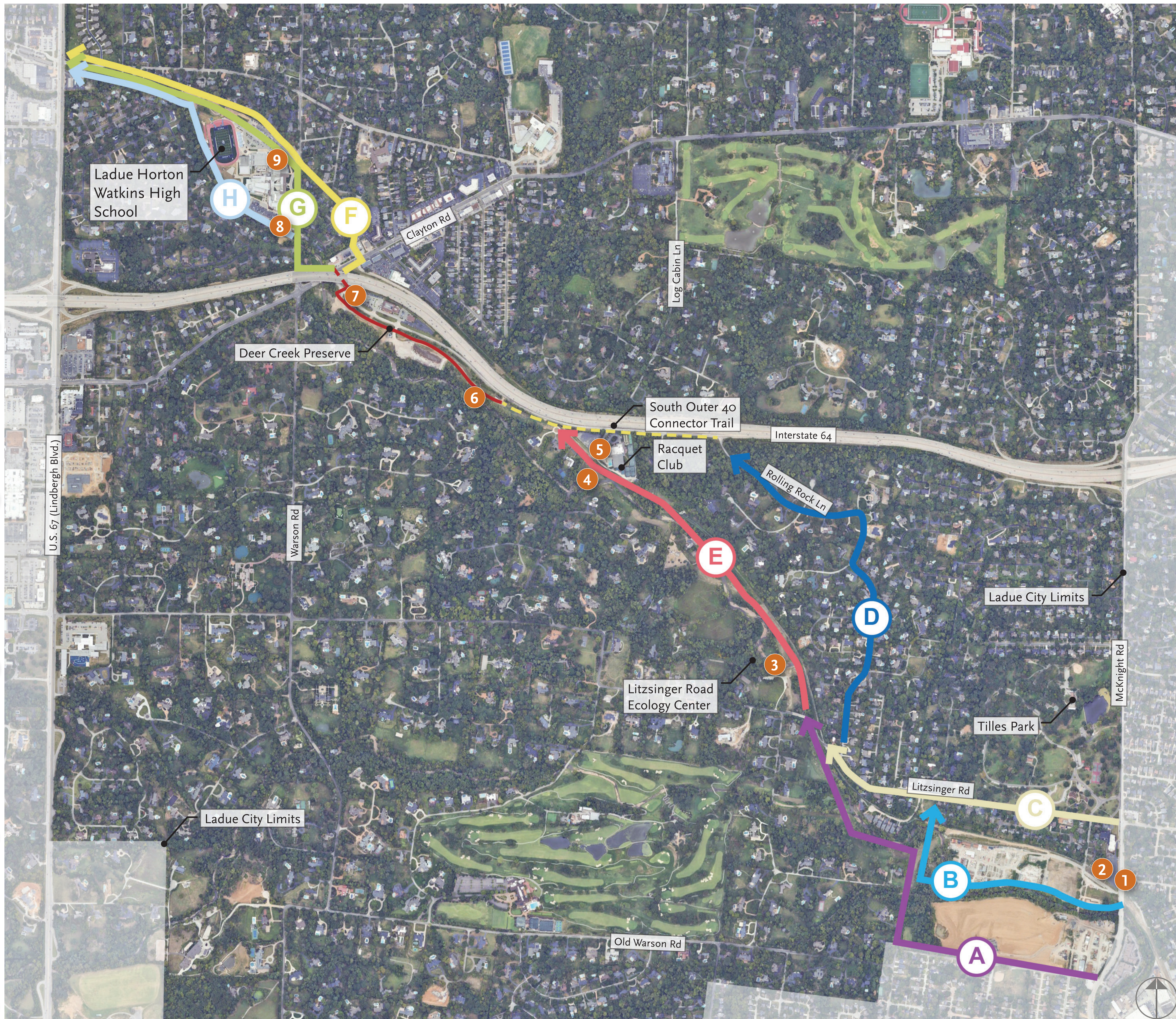
Preserve Trail West Termination 7



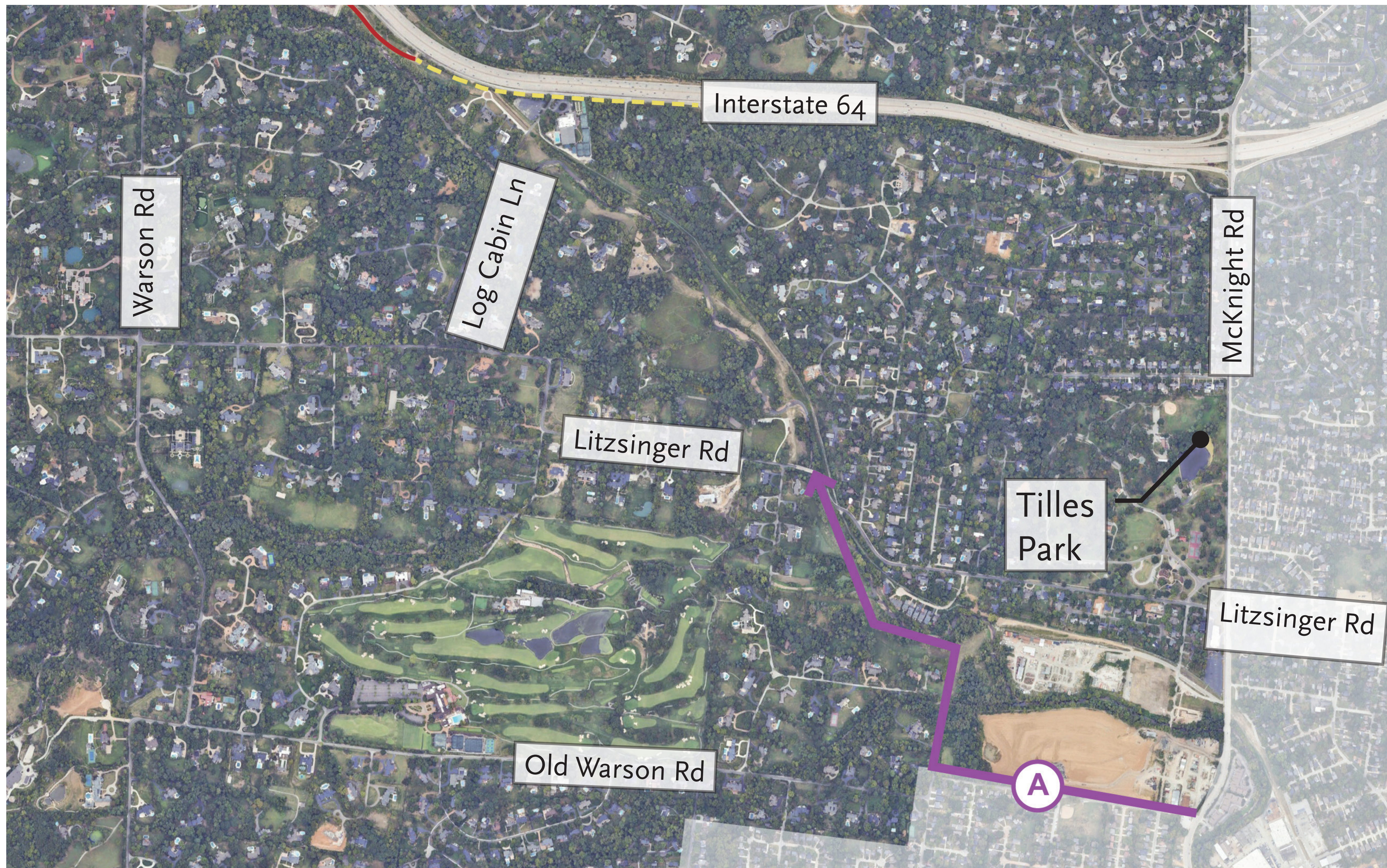
Ladue High School South 8



Ladue High School Expanded North Parking 9



Segment A



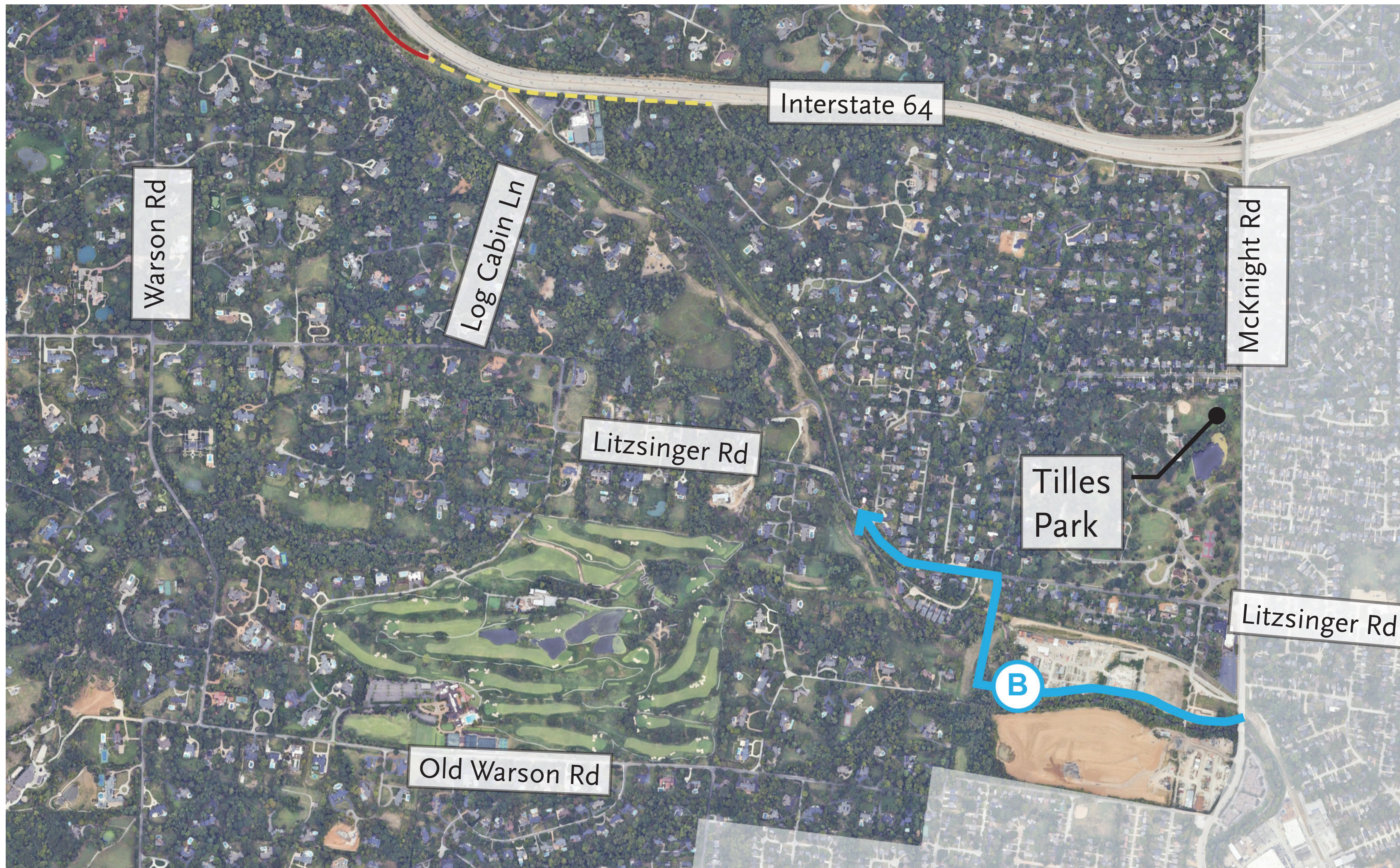
Considerations:

- Potential for ROW alignment at McKnight and Old Warson
- Majority of alignment is off road
- Connection directly to Ameren easement

KEY

- Existing Ladue Trail (Not GRG)
- - - Proposed Ladue Trail (Not GRG)

Segment B



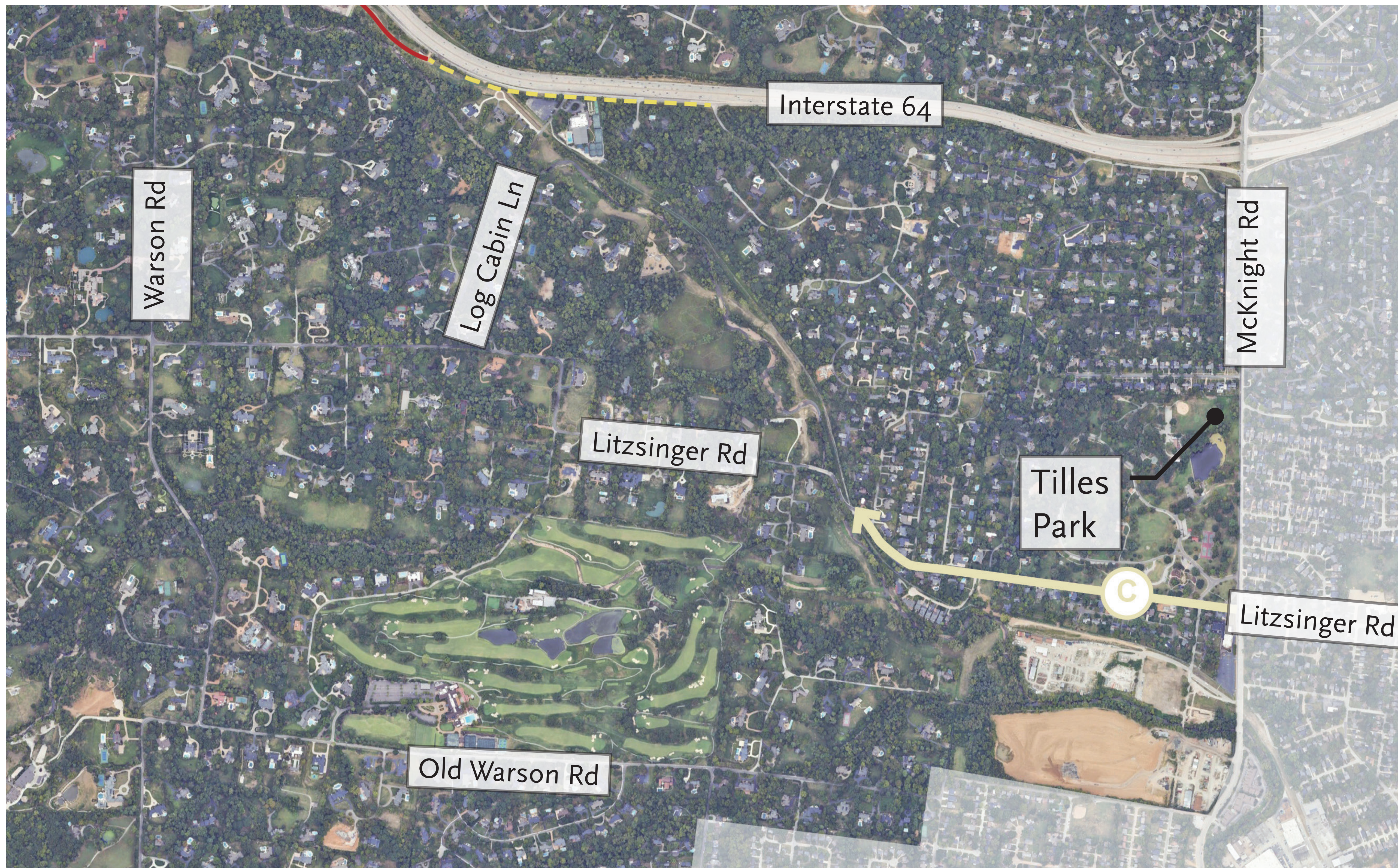
Considerations:

- Follows railroad, Deer Creek, and Ameren
- Minimal interface with residential property /streets

KEY

- Existing Ladue Trail (Not GRG)
- - - Proposed Ladue Trail (Not GRG)

Segment C



Considerations:

- Passes Tilles Park
- Crosses McKnight at Litzsinger intersection

KEY

- Existing Ladue Trail (Not GRG)
- - - Proposed Ladue Trail (Not GRG)

Segment D



Considerations:

- Connection to Ladue trail in Design
- Connects Litzsinger to South Outer 40
- Gate would need to be removed on private subdivision street

KEY

- Existing Ladue Trail (Not GRG)
- - - Proposed Ladue Trail (Not GRG)

Segment E



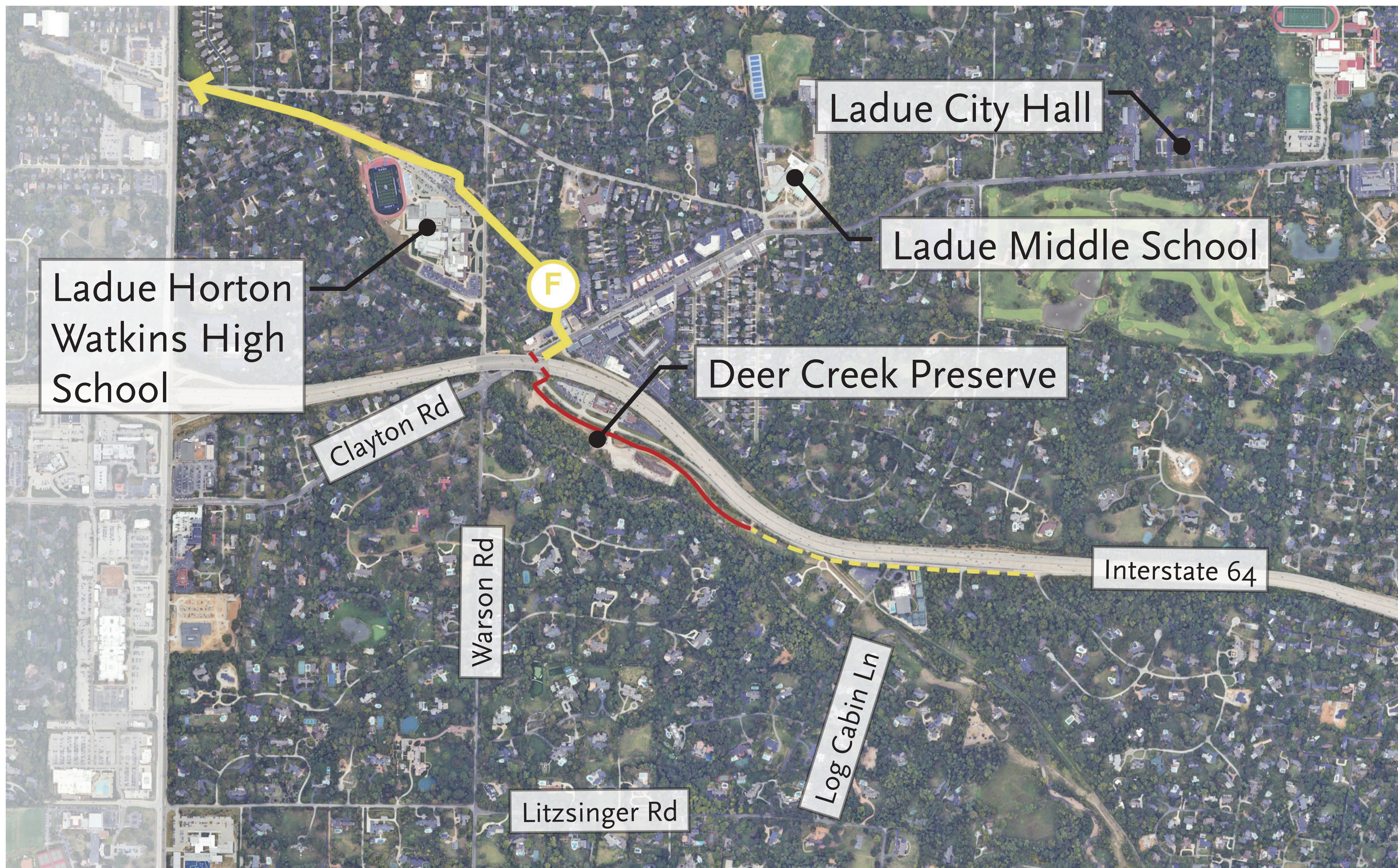
Considerations:

- Use of Ameren easement
- Off road connection
- Views of Litzsinger Road Ecology Center
- Connection to existing Deer Creek Preserve Trail in Ladue

KEY

- Existing Ladue Trail (Not GRG)
- - - Proposed Ladue Trail (Not GRG)

Segment F



Considerations:

- Use of Ameren easement
- Connections to Ladue Horton Watkins High School

KEY

- Existing Ladue Trail (Not GRG)
- - - Proposed Ladue Trail (Not GRG)

Segment G



Considerations:

- Uses existing bridge over Deer Creek
- Direct connection to Ladue High School
- Connection to Ameren easement to U.S. 67 (Lindbergh Blvd.)

KEY

- Existing Ladue Trail (Not GRG)
- - - Proposed Ladue Trail (Not GRG)

Segment H



Considerations:

- Alignment with Deer Creek
- Minimizes interface with school entries and vehicles
- Connection to Ameren easement to U.S. 67 (Lindbergh Blvd.)

KEY

- Existing Ladue Trail (Not GRG)
- - - Proposed Ladue Trail (Not GRG)