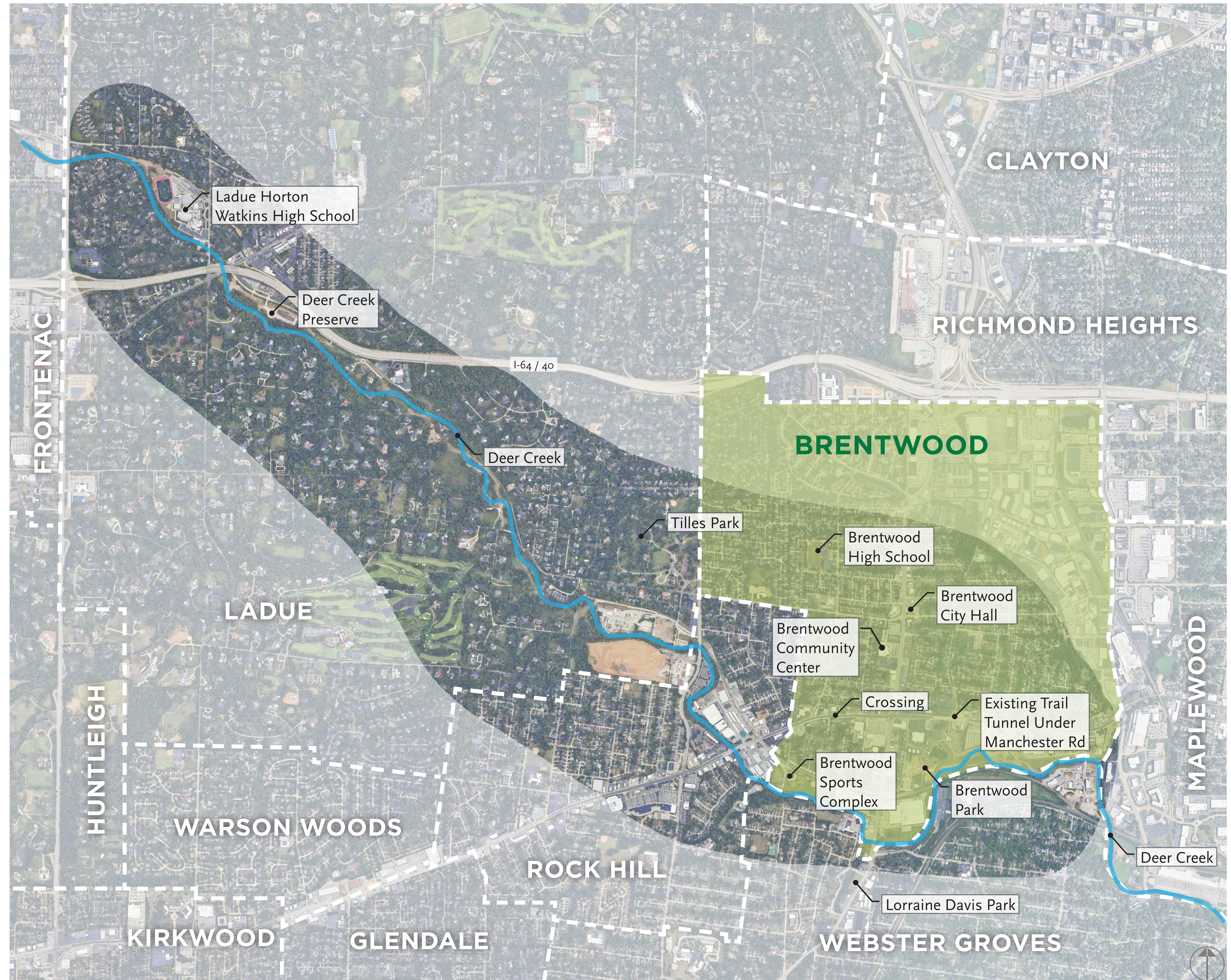


REGIONAL CONTEXT

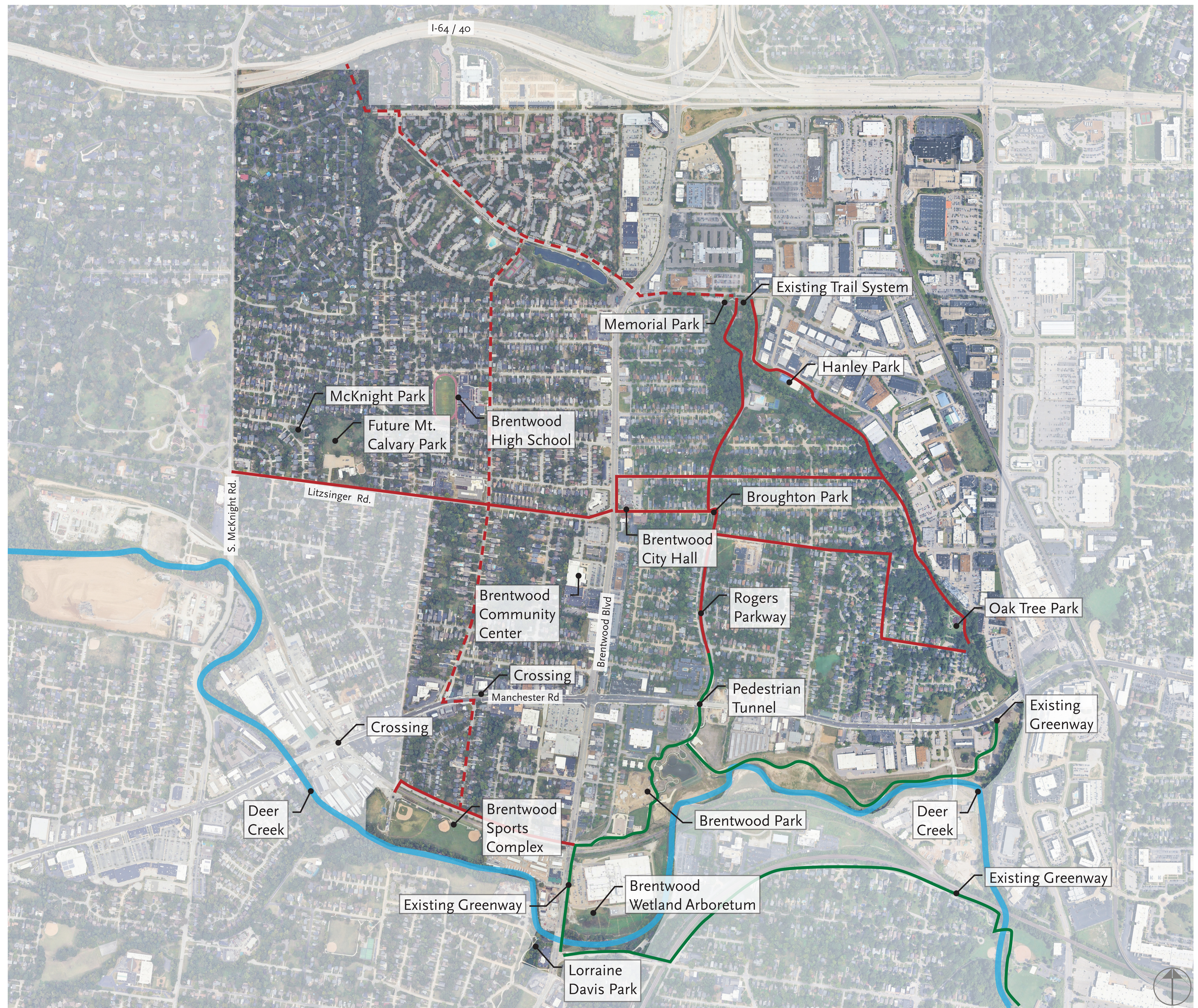
Project Timeline

- 1 CORRIDOR REVIEW** *Oct. - Nov. 2025*
 - Conduct site visits / study area tours
 - Review of maps, past municipal projects and plans, and key considerations
 - Hold conversations with partners and stakeholder groups
- 2 SEGMENT IDENTIFICATION** *Dec. 25- Feb. 2026*
 - Explore possible greenway segment routes
 - Study property, floodplain, and infrastructure factors
 - Hold Open Houses and partner discussions to review segment options
- 3 SEGMENT REFINEMENT** *Mar. - April 2026*
 - Refine alignment options
 - Explore segment layouts and costs
 - Review refined segments with partners & stakeholder groups
- 4 PREFERRED ALTERNATIVES** *April - June 2026*
 - Evaluate segments using shared project goals
 - Identify a preferred alignment and alternates
 - Hold Open Houses and partner discussions to review preferred alignment and alternates
- 5 FINAL ALIGNMENT STUDY** *June - July 2026*
 - Finalize alignments and key details together
 - Refine costing and phasing approach
 - Work with project partners to determine next steps



KEY

- Existing GRG Greenway
- Existing Brentwood Trail, per Parks and Recreation Master Plan dates October 2024 (Not GRG)
- Proposed Brentwood Trail, per Parks and Recreation Master Plan dated October 2024 (Not GRG)
- Deer Creek





Litzinger Rd and High School Dr 1



S Brentwood Blvd and Eulalie Ave 2



Mark Twain Elementary School 3



Crossing underneath Manchester Rd 4



Greenway through Brentwood Park 5



Rail Crossing at S Brentwood Blvd 6



Greenway on S Brentwood Blvd 7



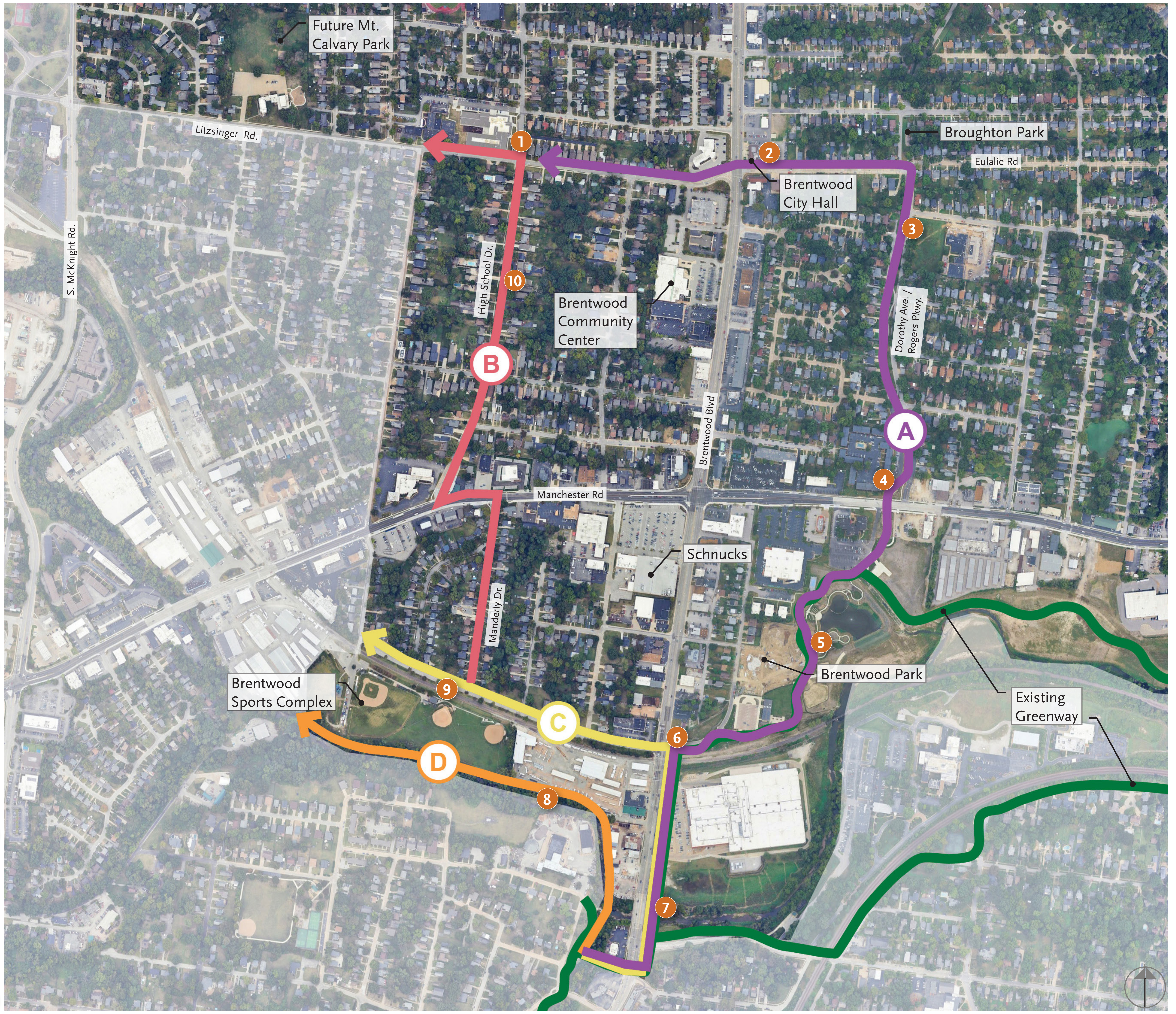
Deer Creek at the Sports Complex 8



Russell Ave 9



High School Dr 10



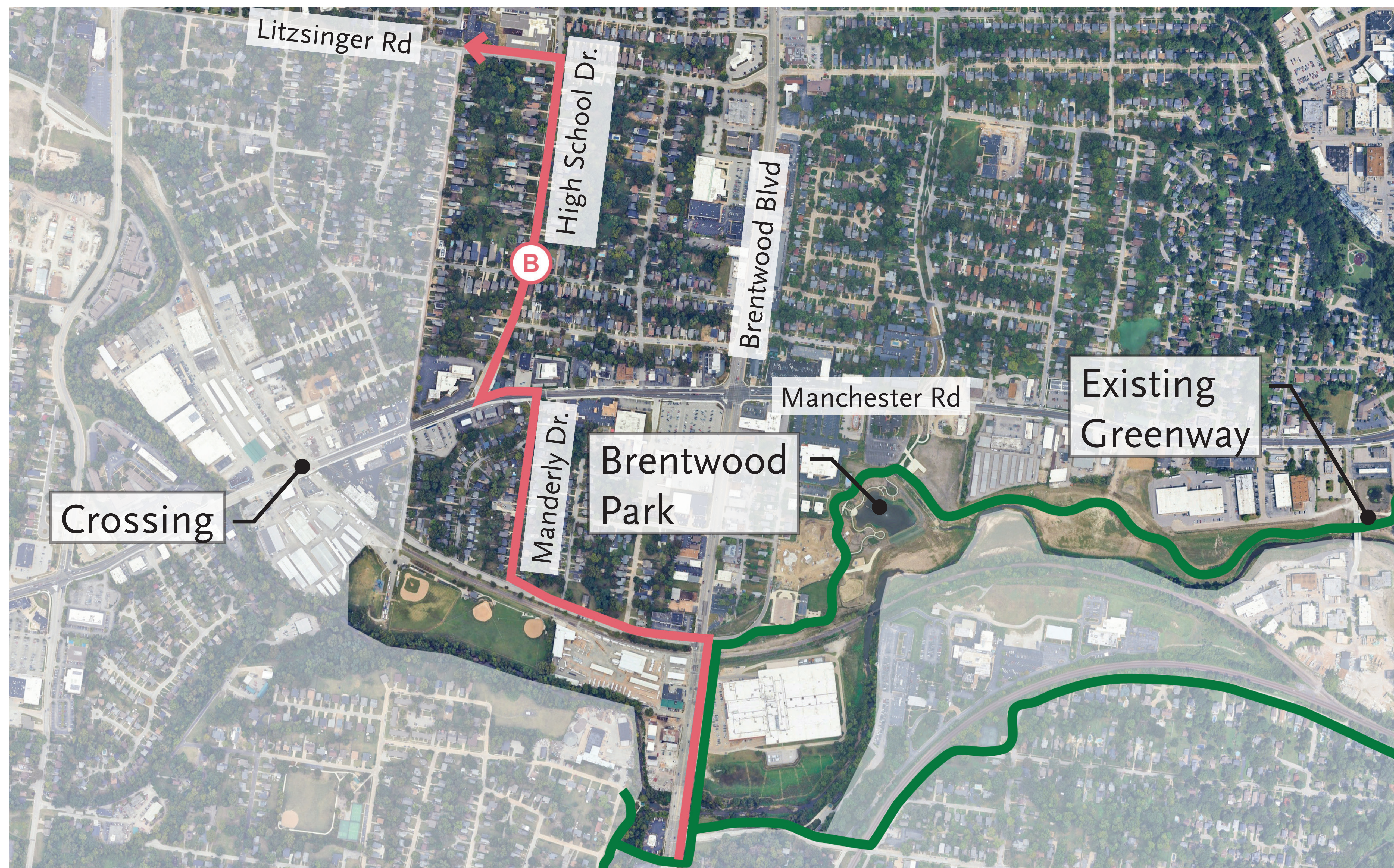
Segment A



Considerations:

- Existing GRG Greenway infrastructure / Rogers Parkway
- Connection through Brentwood Park
- Eliminates Manchester crossing

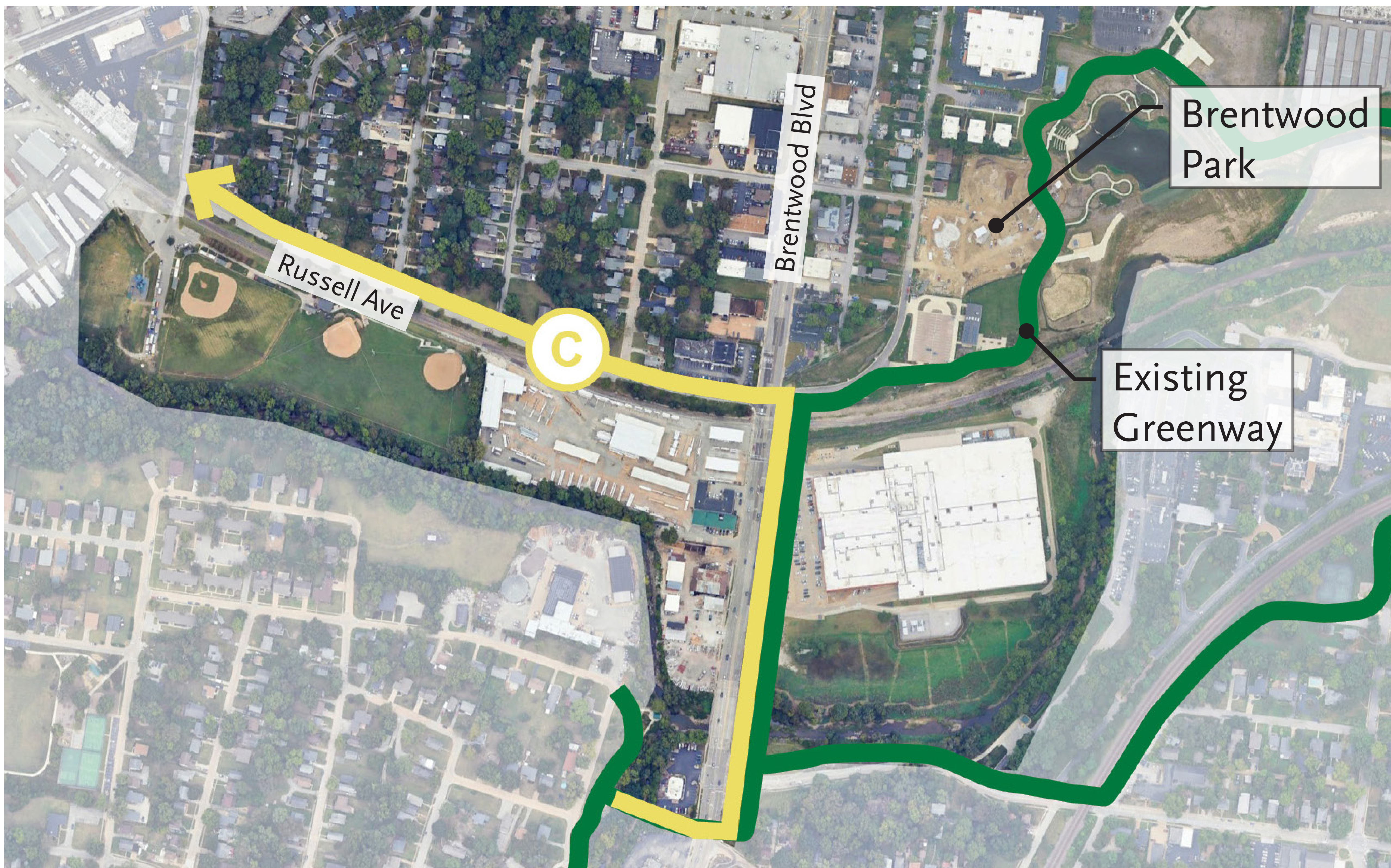
Segment B



Considerations:

- Street conversion potential (30' pavement width existing)
- Close alignment to Manchester pedestrian crossing
- Alignment identified in Brentwood Trails Plan

Segment C



Considerations:

- Existing GRG infrastructure along Brentwood Blvd.
- Primarily public ROW
- Would lead to an existing crosswalk in Rock Hill

Segment D



Considerations:

- Follows Deer Creek
- Potential for bridge connection to Brentwood Sports Park