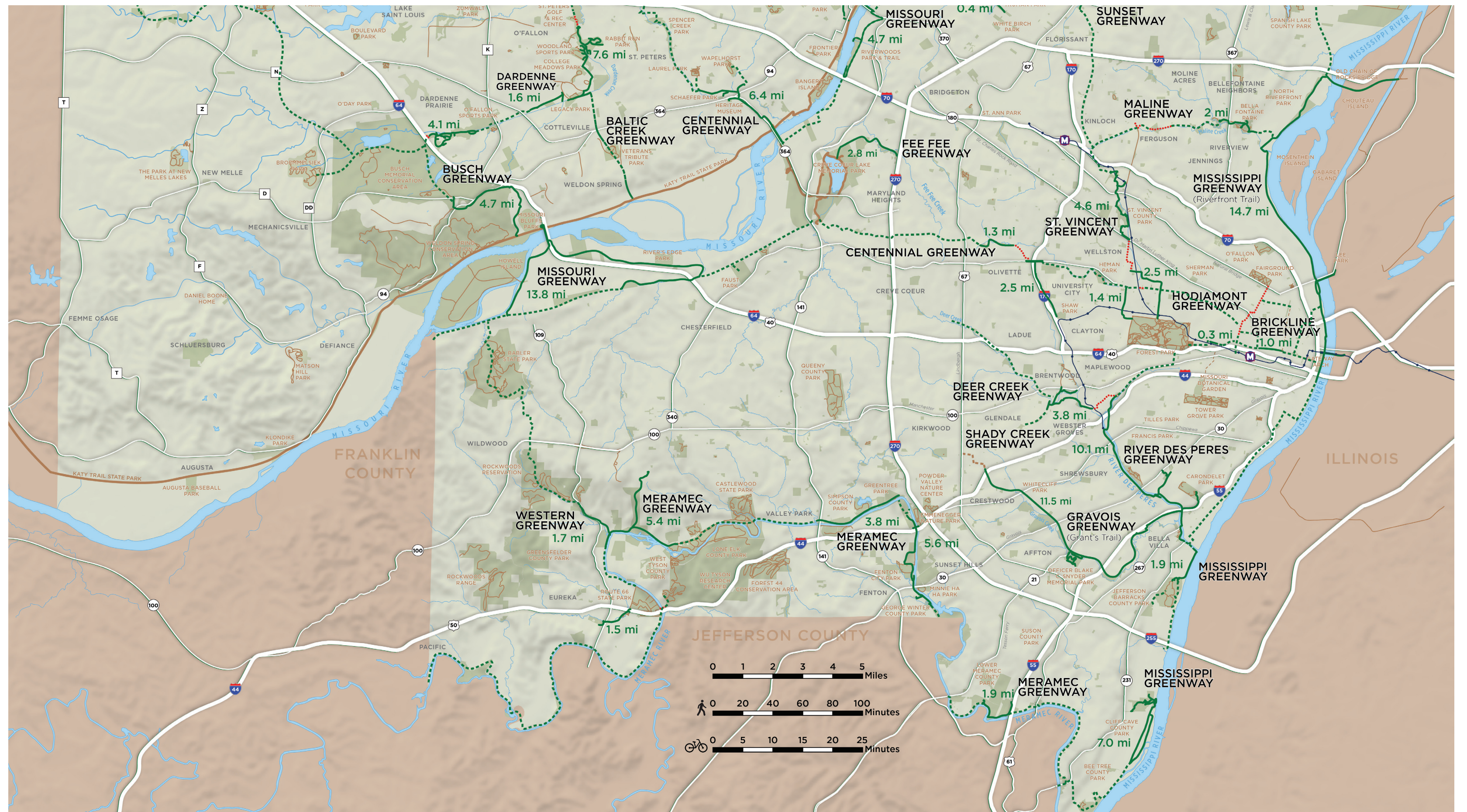


THE MERAMEC GREENWAY



WHAT IS THE MERAMEC GREENWAY?

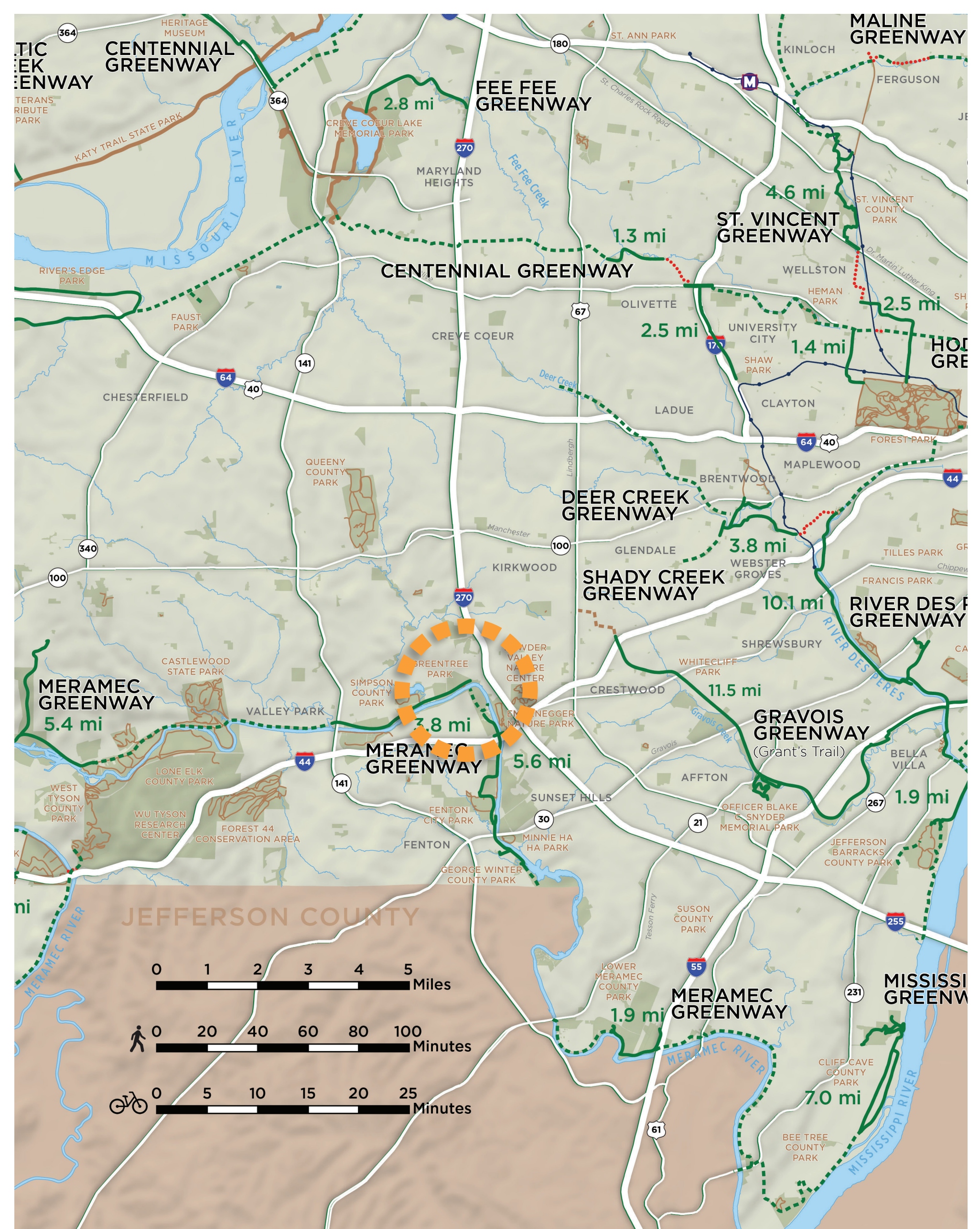
The Meramec Greenway is a 20.2 mile trail composed of asphalt and crushed stone.

The trail begins at Route 66 Park in Eureka and follows the Meramec River to Lower Meramec Park in St. Louis.

The greenway passes through a variety of communities, creating connections between other parks and greenspaces.

It is not yet a complete greenway; there are many gaps along the way, including the project site.

At full build out, the greenway will be about 50-miles long.





WHO IS INVOLVED?

Your Voices Drive Projects

Throughout all stages, our greenway projects use a cycle of engagement that prioritizes community voice and input throughout planning and design.

We do our best to meet people where they are and build civic trust, involving the public in the project because we know they are the experts on their communities and their investment and ownership are crucial to long-term successful projects. The methods we use to engage community stakeholders depend on the project's impact on their homes, businesses, and lives. We actively gather feedback from community members that helps shape the plans and designs for the greenway, and we keep everyone informed of the project's progress.

Then we align that feedback with other components of the project, including technical feasibility, project costs, partner agreements, land ownership or permissions, timing and more. We work to manage expectations and find the best way forward with as much positive impact as possible. We continue to ask and align as we move forward through the project's planning, design and construction activities.

We are engaging with the following stakeholders in this Feasibility Study Process...

- City of Kirkwood
 - City Council
 - Park Board
 - Parks and Recreation Department
 - Floodplain Administrator
- City of Fenton
 - Board of Aldermen
 - Floodplain Administrator
- St. Louis County
 - Department of Parks and Recreation
 - Public Works/Floodplain Management
 - Department of Transportation
- US Army Corps of Engineers
- National Park Service (Grant Funding Source)
- Burlington Junction Railway
- Missouri Department of Transportation
- Nearby residents, businesses, and property owners
- Meramec River Recreation Association
- Open Space Council
- Scott Gallagher Soccer Park
- St. Louis Disc Golf Club
- Existing Greenway Users

Who else should we be talking to?

Use a sticky note to suggest people or organizations that should engage with this process.

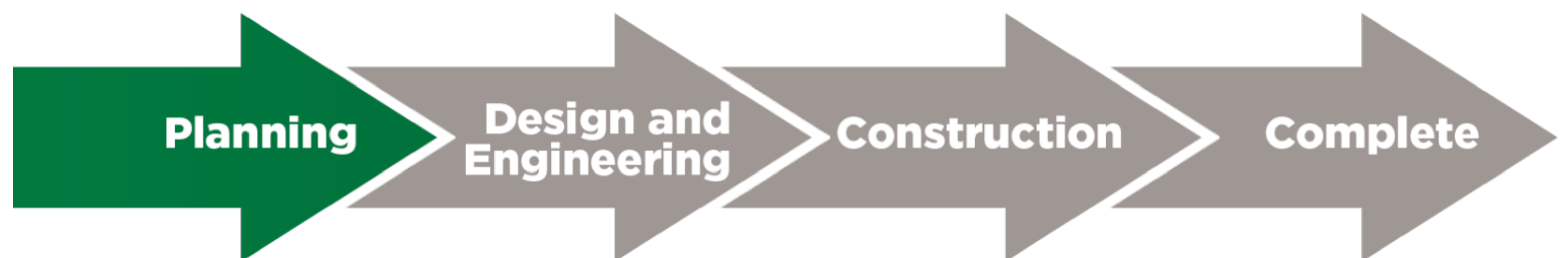
WHAT IS A FEASIBILITY STUDY?

A Feasibility Study is a comprehensive assessment of a project to determine if the project is practical, viable, and has the potential for success based on technical, financial, and environmental viability. It helps us answer questions about if a project can be constructed within physical and budgetary constraints while meeting the goals.

The Meramec Greenway Bridge Feasibility Study is looking to understand the feasibility of a walking and biking trail over the Meramec River linking Unger County Park and Greentree Park. The Study is investigating components such as:

- Appropriate Location
- Flooding Impacts
- Tree Removal Impacts
- Potential Connectivity
- Surrounding Land Use Impacts or Synergies
- Park and Greenway Usage
- Aesthetics

PROJECT TIMELINE



The Feasibility Study is a component of the Planning stage of the project timeline. This early planning project seeks to understand project feasibility and whether or not Great Rivers Greenway and other partners should continue to move forward in trying to bring this project to life.

FEASIBILITY STUDY TIMELINE

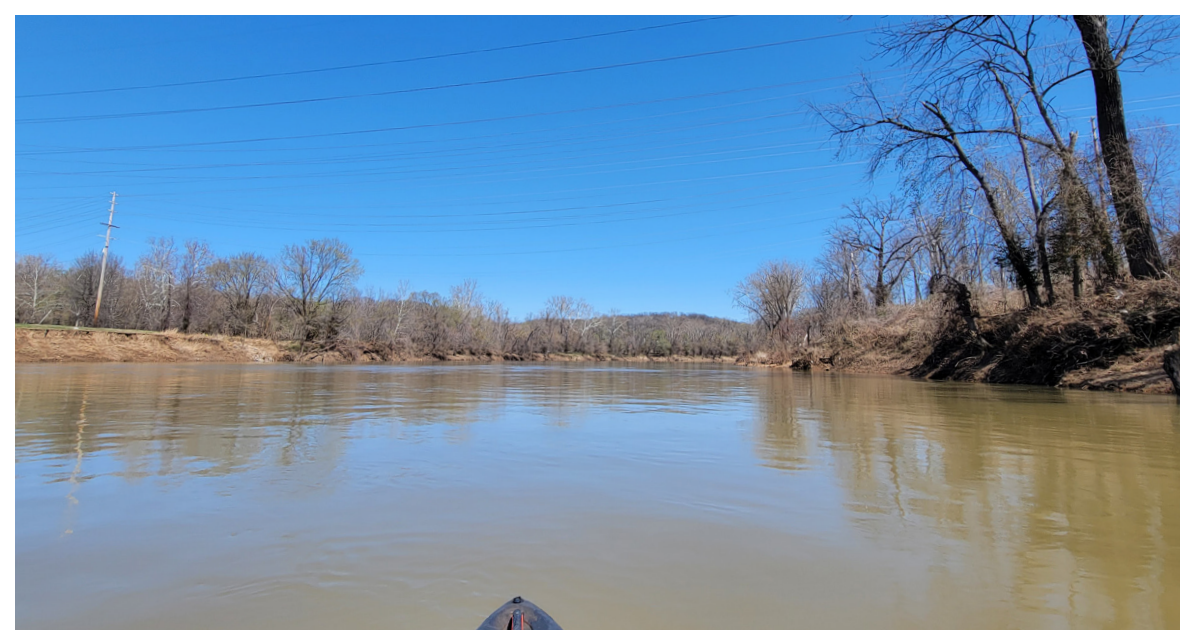
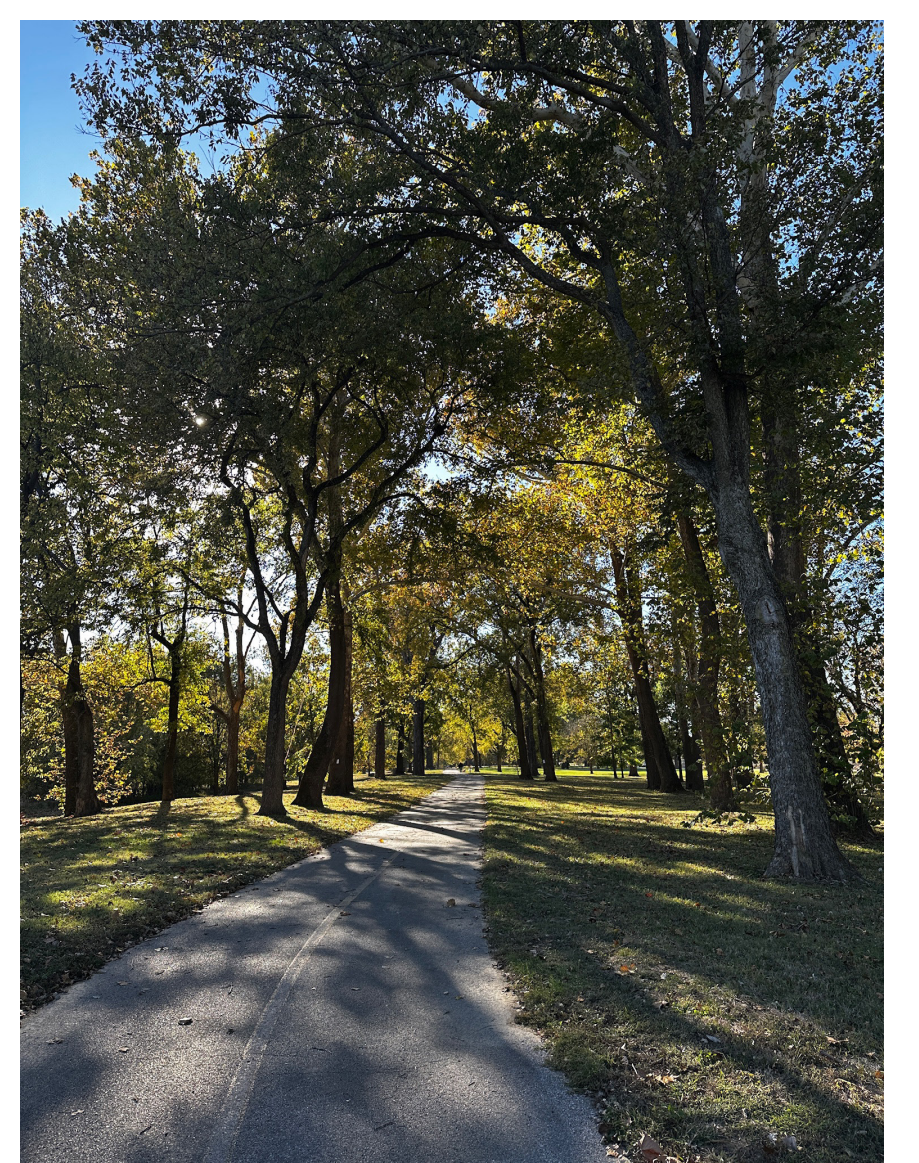
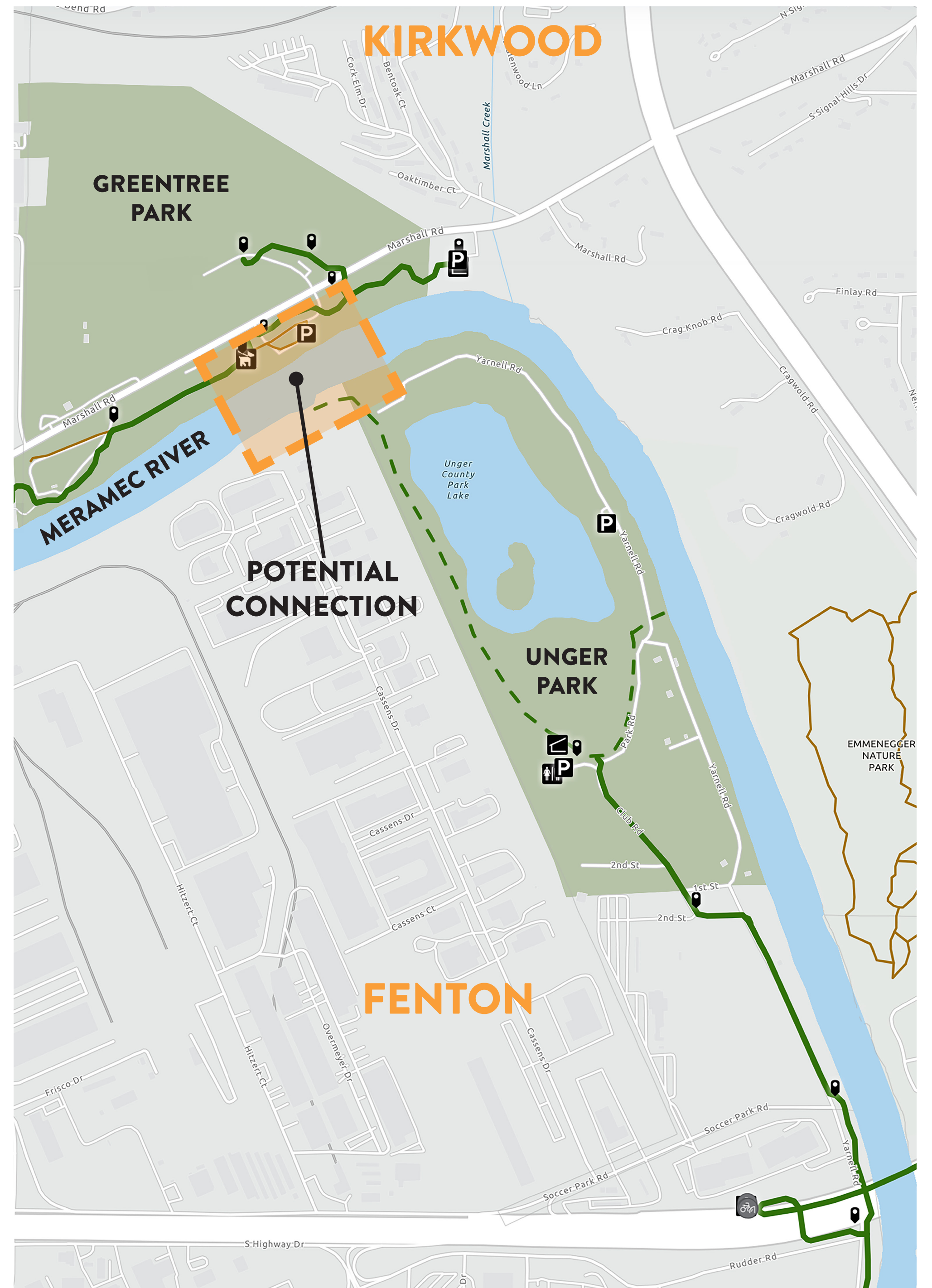


THE SITE

General Location

WHERE IS IT? The location of the potential crossing is shown on the map at right and is roughly from the northwest corner of Unger Park in the City of Fenton to the southern end of Greentree Park in the City of Kirkwood.

WHY HERE? During the Unger Park Realignment project and the overall Meramec Greenway planning process, several locations have been considered as potential crossings, creating the overall connectivity desired by the community. Things like flooding, property acquisition, right-of-way access, maintenance, and potential partners have been considered. This analysis has resulted in this general location for further analysis.



THE SITE

Potential Local Connections

The vision of this segment of the Meramec Greenway is...

to connect two parks (Unger Park and Greentree Park)

...and connect two communities (Fenton and Kirkwood)

Both parks have undergone significant planning in the past 18-months, with new investment planned on both sides of the Meramec River. This vision stems from feedback received during past planning processes, calling for more connectivity and access across the Meramec.

Greentree Park Master Plan (2026)

The Greentree Park Master Plan, currently in Draft Form, proposes improvements to Greentree Park including a relocated shelter and restroom, new tree lawn, restored native landscape, renovated parking lot and boat ramp, as well as trail realignment and maintenance. Additional improvements in the northern part of the Park are proposed. The improvements to Greentree Park seek to add new and improved amenities for residents while also relocating several assets further away from the Meramec River due to repeat instances of flooding.

Unger County Park Trail Realignment Plan (2026)

Unger County Park Trail Realignment Plan was conducted in partnership between Great Rivers Greenway and St. Louis County and proposes significant improves to Unger Park including a relocated trail on the interior of the park, new native landscape, a trailhead with parking, and several lookouts. These improvements seek to improve the usability of the park for residents and visitors while also solving several flooding concerns.



“I was hoping you would find a way to link the North side of the river trails to the Unger Park/Fenton trails.”

- Comment from Community Member during Unger Park Realignment Project

“I had heard of the possibility of a bridge over the Meramec to Greentree Park. My family would love to see that become a reality.”

- Comment from Community Member during Unger Park Realignment Project

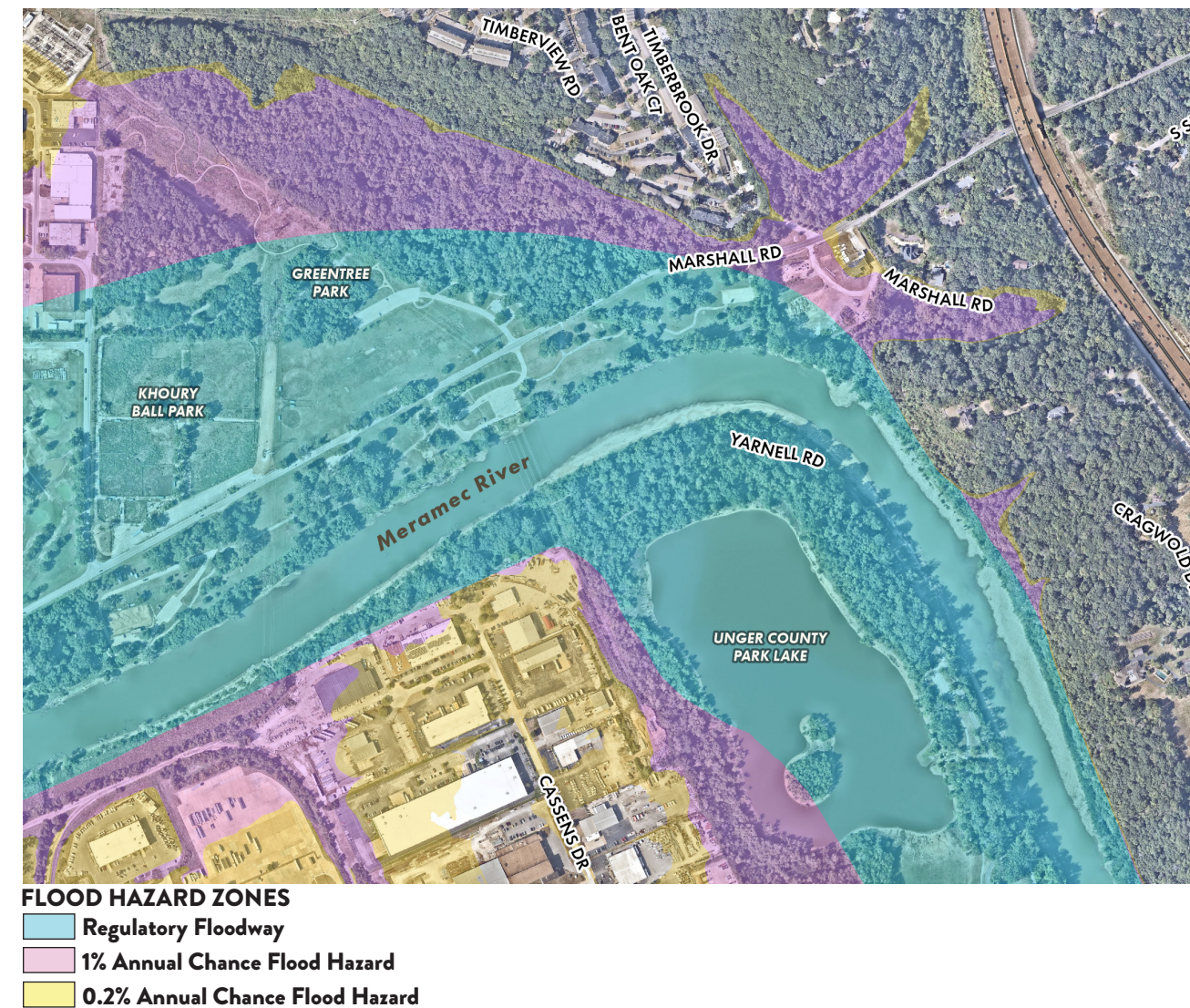


ENGINEERING

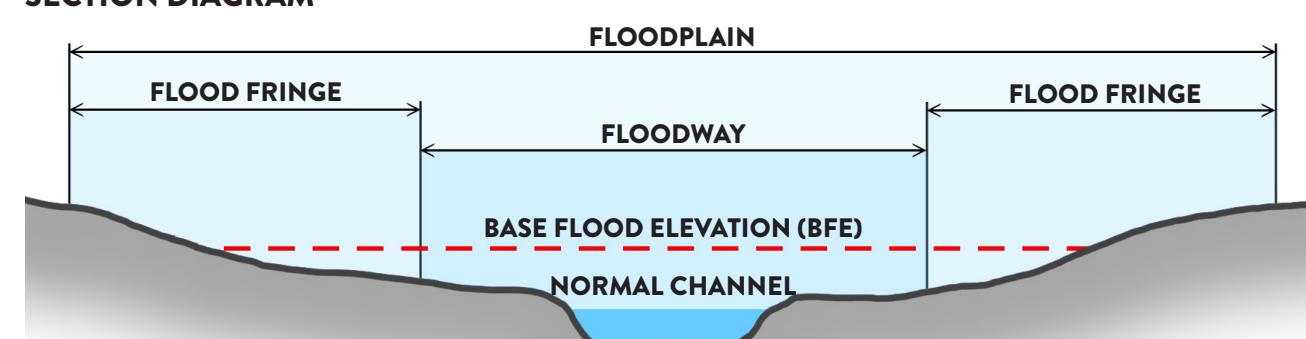
Understanding Feasibility

One component of understanding the feasibility of this project is assessing the impact on the river itself. To do this, the project team created a Hydraulic Model to simulate the existing water flow and how that might change with a bridge be added to this area. The model seeks to understand how water levels, velocity, and risks change depending on different aspects of bridge construction and design.

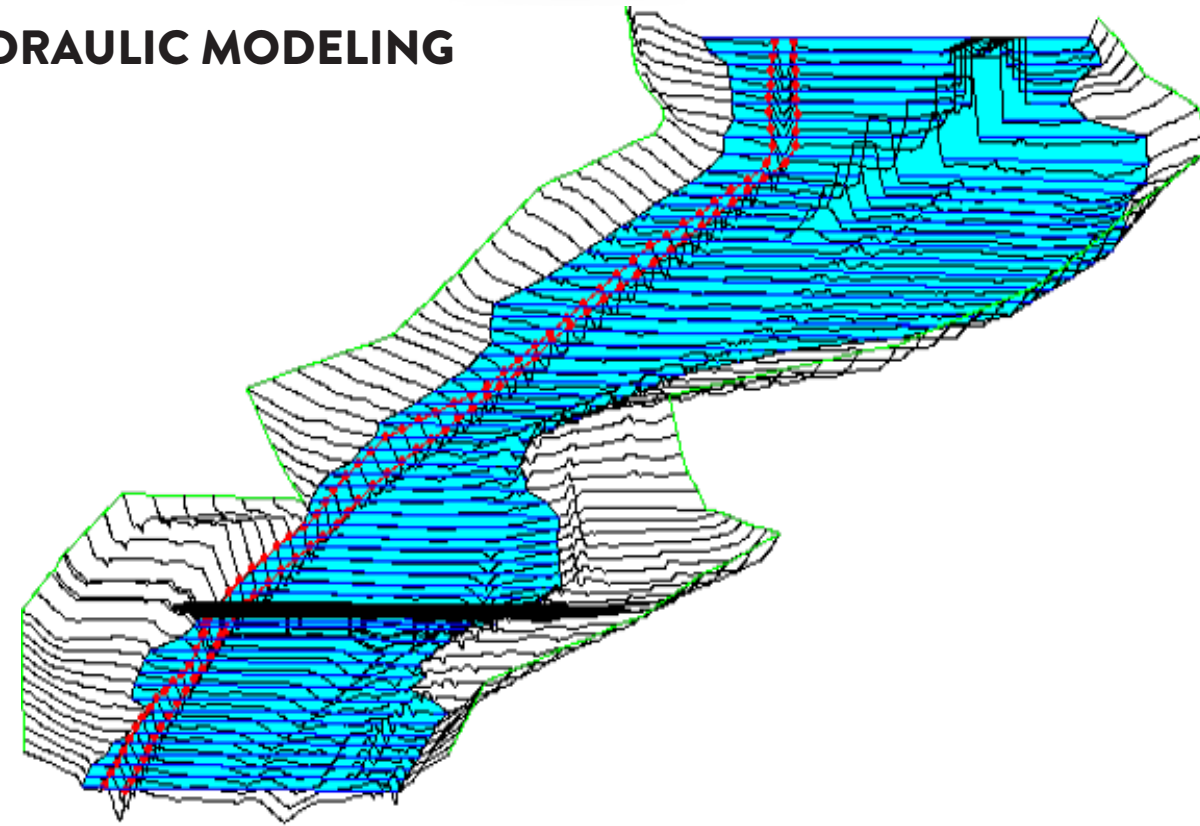
MERAMEC RIVER FLOODPLAIN



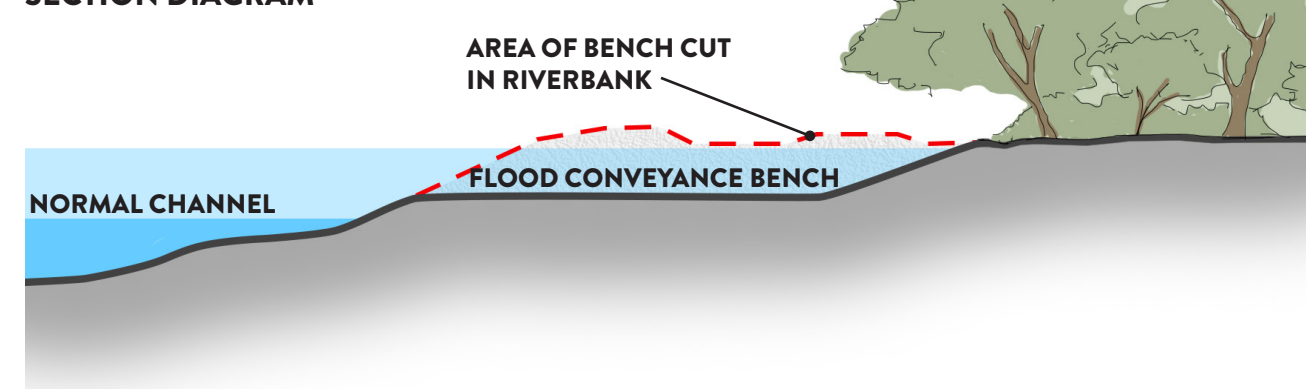
FLOODPLAIN SECTION DIAGRAM



HYDRAULIC MODELING



FLOOD CONVEYANCE BENCH SECTION DIAGRAM



FLOOD CONVEYANCE BENCH DEER CREEK GREENWAY CITY OF BRENTWOOD



GLOSSARY OF TERMS

Floodplain Mapping

A floodplain is the area of land next to a river or stream that stretches from the banks of the river to the outer edges of the valley.

A floodplain consists of two parts:

- **Floodway:** this includes not only the low flow channel of the Meramec River but also the entirety of Greentree and Unger Park.
- **Flood fringe:** this extends from the outer edges of the floodway to the slopes that rise above Greentree and Emmenegger Parks and the high ground on which Cassens Drive Industrial Park is located

Base Flood Elevation (BFE)

The Federal Emergency Management Agency (FEMA) maintains maps showing the extent of the floodplain and the flood water level, which is called the Base Flood Elevation (BFE).

No-rise requirements

New structures in the floodway, like bridges, are only permitted if engineers prove that they cause no rise in the elevation of the floodplain (or the Base Flood Elevation BFE).

The Meramec River has an upstream drainage area of approximately 3,980 square miles at Unger Park, and discharges into the Mississippi River approximately 20 miles downstream. Even a small, 0.05-foot increase in the BFE would have the potential to extend 30 miles up-river and impact thousands of properties.

Hydraulic Modeling & Analysis

Hydraulic modeling is the simulation of how water flows through rivers and floodplains. Engineers use these models to predict water levels, flow velocity, flood extents, and flood risk to help design and manage water infrastructure under different conditions.

Flood Conveyance Bench

A flood conveyance bench is a flat, step-like feature constructed along a river channel. It manages water flow by widening the available area for the river to flow.

A bridge located in the floodplain has the potential to block river flow and create a rise in the Base Flood Elevation (BFE). A flood conveyance bench is a key strategy to offset this blockage. It lowers the BFE and offsets the rise in the BFE created by the bridge. The net result is no rise in the BFE.

Potential functions and benefits include:

- Increased floodwater conveyance capacity
- Energy dissipation and reduction in streambank erosion
- Ecological habitat creation
- Water quality improvements



PRIORITIES

What is most important to you?

When considering the location and design of a potential bridge in this area, various priorities and trade-offs are taken into consideration. What is most important to you?

Place a dot on each row to display where you fall on each of the priority spectrums below.

ENVIRONMENTAL IMPACT

(minimizing the size or footprint of the bridge in the river and on both sides)

EASE OR CONVENIENCE OF CONNECTION

(limiting the use of switchbacks to create a more direct connection and shorter length for bicylists and pedestrians)

VIEW FROM THE BRIDGE

VIEW FROM THE PARKS ON EITHER SIDE

BRIDGE AS A CONNECTION

BRIDGE AS A DESTINATION

What types of amenities make sense on or near the bridge?

Use the sticky dots to choose which 3 you think would be best.

PLACES TO GATHER

PLACES TO STOP AND REFUEL

PLACES TO LEARN

PLACES FOR ART

PLACES TO TAKE IN THE VIEW

PLACES TO REST

Something else?

Use the sticky note to provide a suggestion here.



Share your thoughts!

USE THIS SPACE TO POST YOUR THOUGHTS, OPINIONS, AND CONCERNS ABOUT THE PROJECT! WE WANT TO HEAR FROM YOU!

