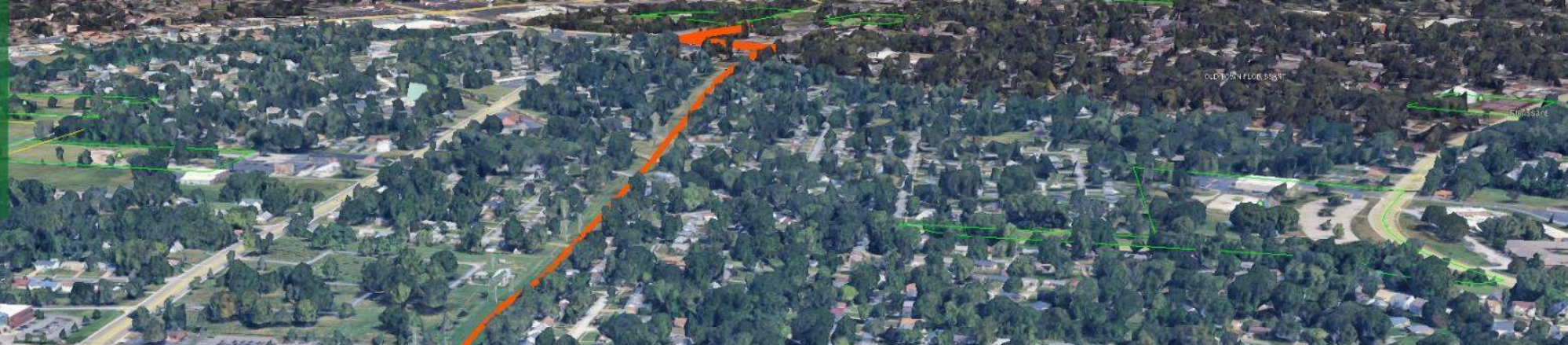




Great Rivers Greenway



Open House

Sunset Greenway (135B) Input Session

March 31, 2026



Key Strategic Group

Intuition & Logic, T² Traffic & Transportation

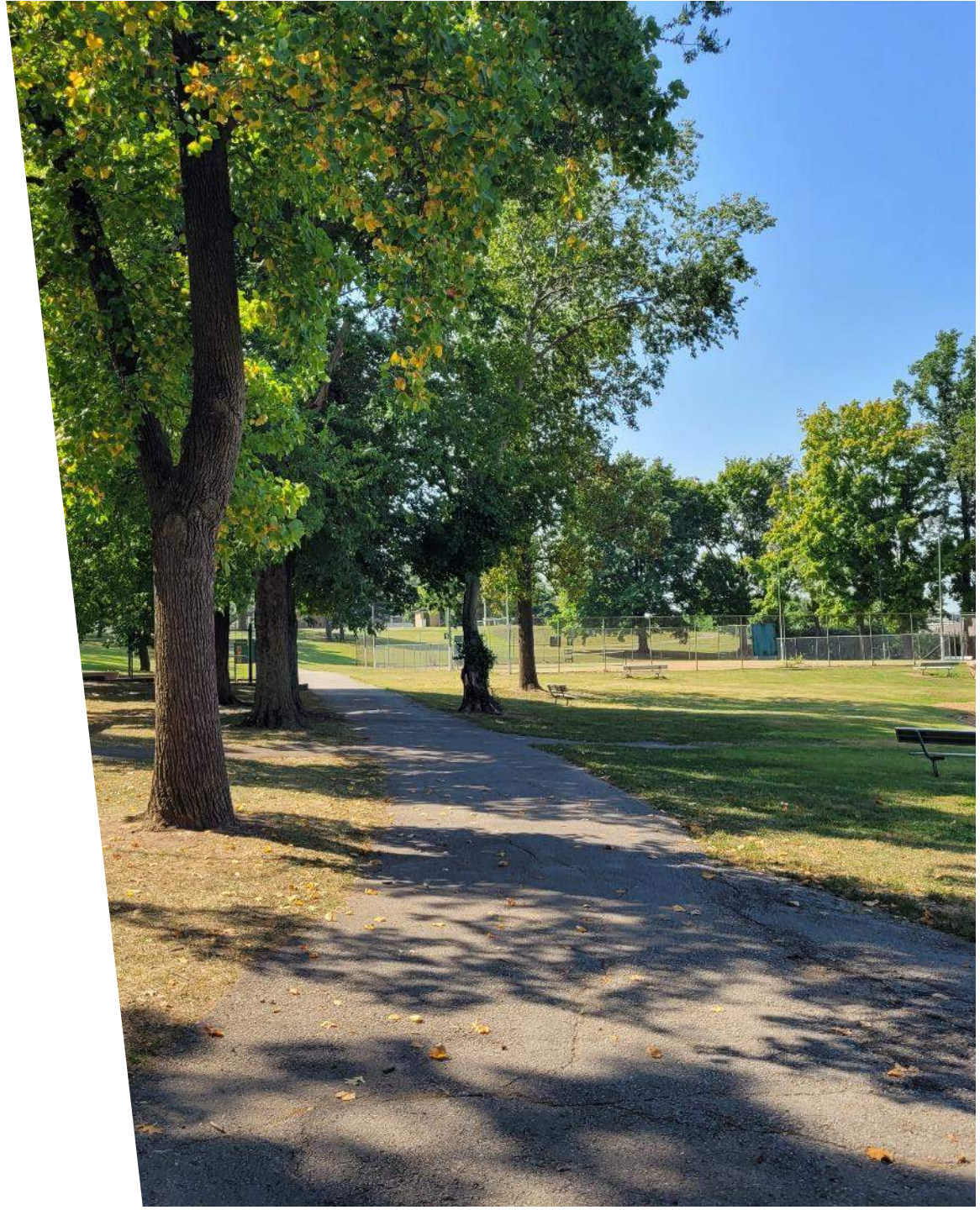


Google Earth



Agenda

- **Welcome & Introductions**
- **Great Rivers Greenway**
- **Project Overview**
- **Q&A**
- **Next Steps**



MISSION

Great Rivers Greenway makes the St. Louis region a more vibrant place to live, work and play by developing a regional network of greenways.

BENEFITS OF GREENWAYS:

CONSERVATION | TRANSPORTATION | HEALTH | COMMUNITY | ECONOMY

MEET US:

GREAT RIVERS GREENWAY

- Regional multi-county public agency/parks and trails district:
 - City of St. Louis
 - St. Louis County
 - St. Charles County
- Actively building 20+ greenways across the region
- 140 miles of greenways planned, designed and built so far
- 250+ successful working partnerships, municipalities and institutions
- Creating a legacy of greenways for future generations to enjoy



MEET US:

WHAT IS A GREENWAY?

Greenways are outdoor spaces connecting people & places.



Pedestrian & Bicycle Trails

Conservation Projects

Trailheads with Amenities

Neighborhood Connections

NORTH COUNTY COMMUNITY ENGAGEMENT PROJECT AREA



RIVERVIEW GREAT STREETS: CHAIN OF ROCKS TO ZOO WILDCARE

SUNSET PARK TO KOCH PARK DESIGN

TRUMAN PARK CONNECTIONS

COLDWATER PARK TO ST. VINCENT & MALINE GREENWAYS PLANNING





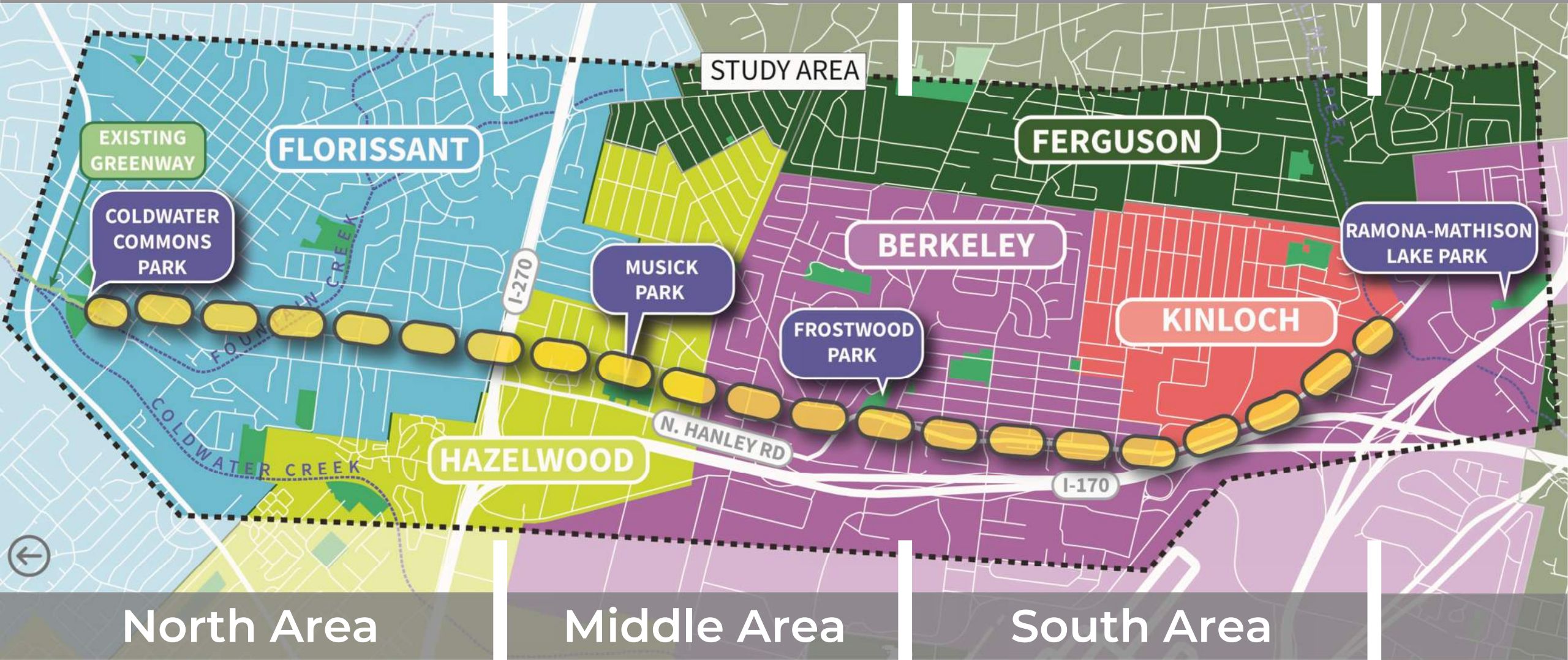
Project Understanding

- Define vision for Sunset Greenway
- Reinforce GRG values: connectivity, equity, environment, and experience
- Ground the planning in community input

Study Tasks

- Start-Up & Discovery
- Analysis
- Alternatives Development
- Refinement
- Documentation
- Timeline: 12 – 18 months total





Sunset Greenway (135B)

Coldwater Commons Park to Maline Greenway

Trail Safety in Utility Corridors

- Trails located within utility corridors are common across the region and the country.
- More than 2 miles of the existing Sunset Greenway already operate within the Ameren transmission corridor.
- The trail will be designed in coordination with Ameren to maintain safe distances from towers and equipment.
- Features such as setbacks and fencing will help keep users safely separated from infrastructure.

Bottom line: This trail builds on a proven, safe approach already in use locally.





North Area



PROPOSED SUNSET GREENWAY ALIGNMENT

FOUNTAIN CREEK

MANN MEATS

BIG BELLY DELI

GOEKE PRODUCE

ST. FERDINAND SHRINE

COLDWATER CREEK

EXISTING SUNSET GREENWAY

COLDWATER CREEK PARK

Washington St

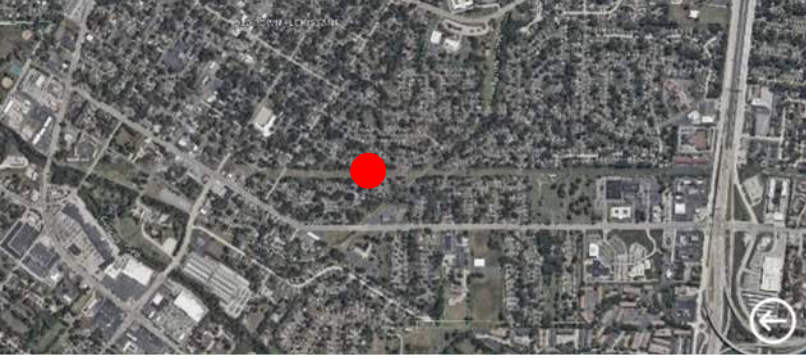
St Ferdinand St

Rue St. Francois St

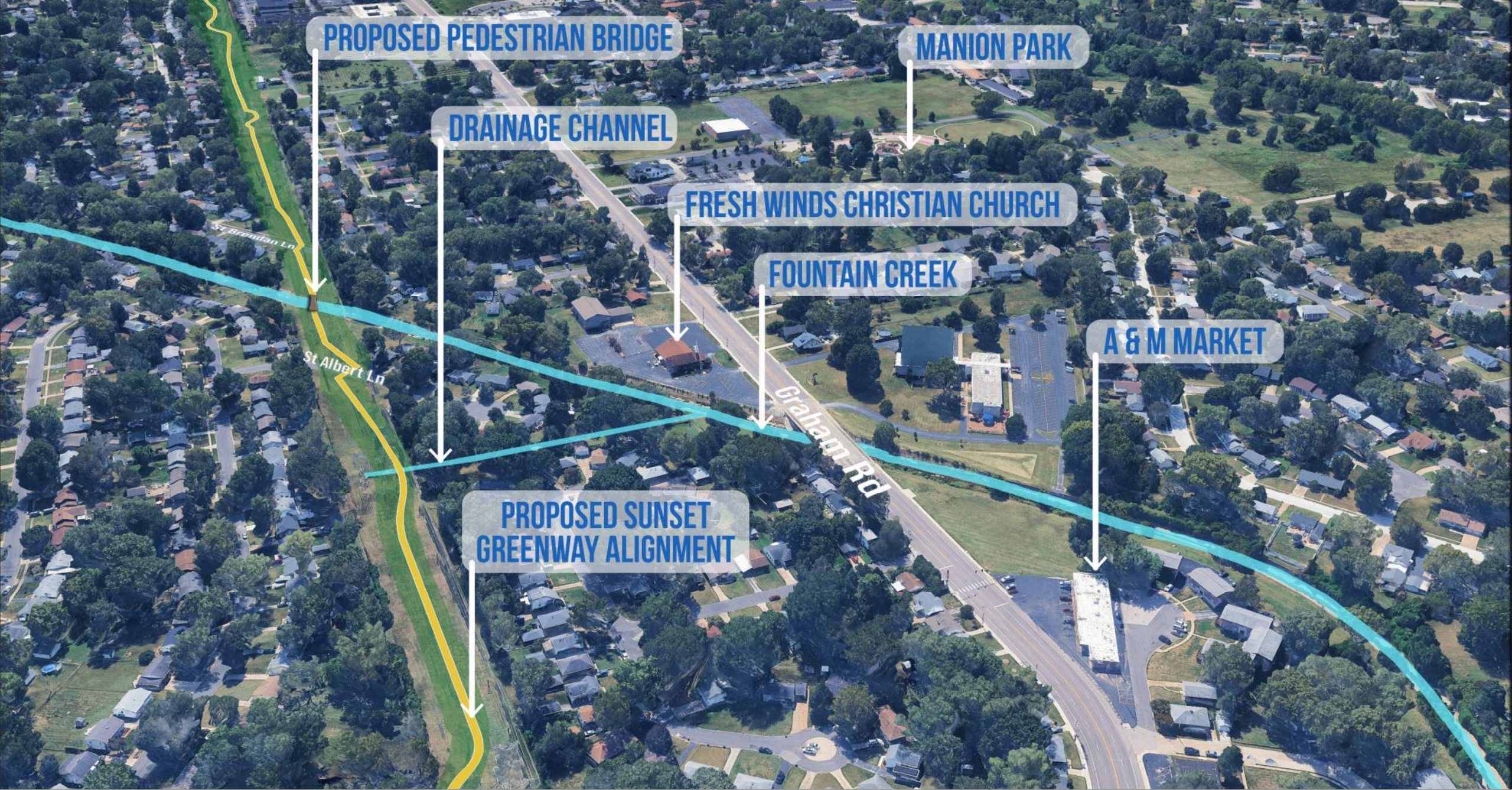
St Charles St

St Dennis St

North Area



North Area



PROPOSED PEDESTRIAN BRIDGE

MANION PARK

DRAINAGE CHANNEL

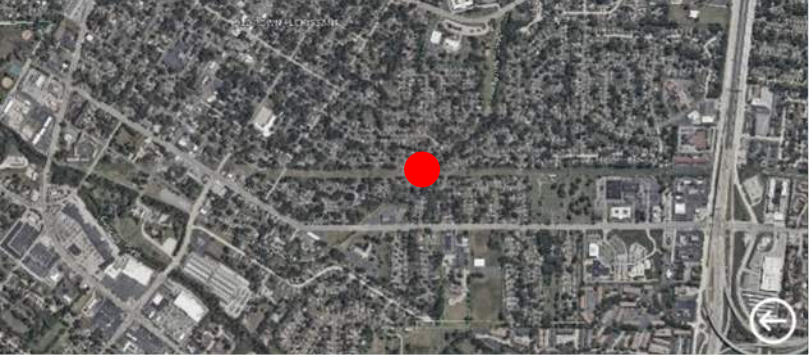
FRESH WINDS CHRISTIAN CHURCH

FOUNTAIN CREEK

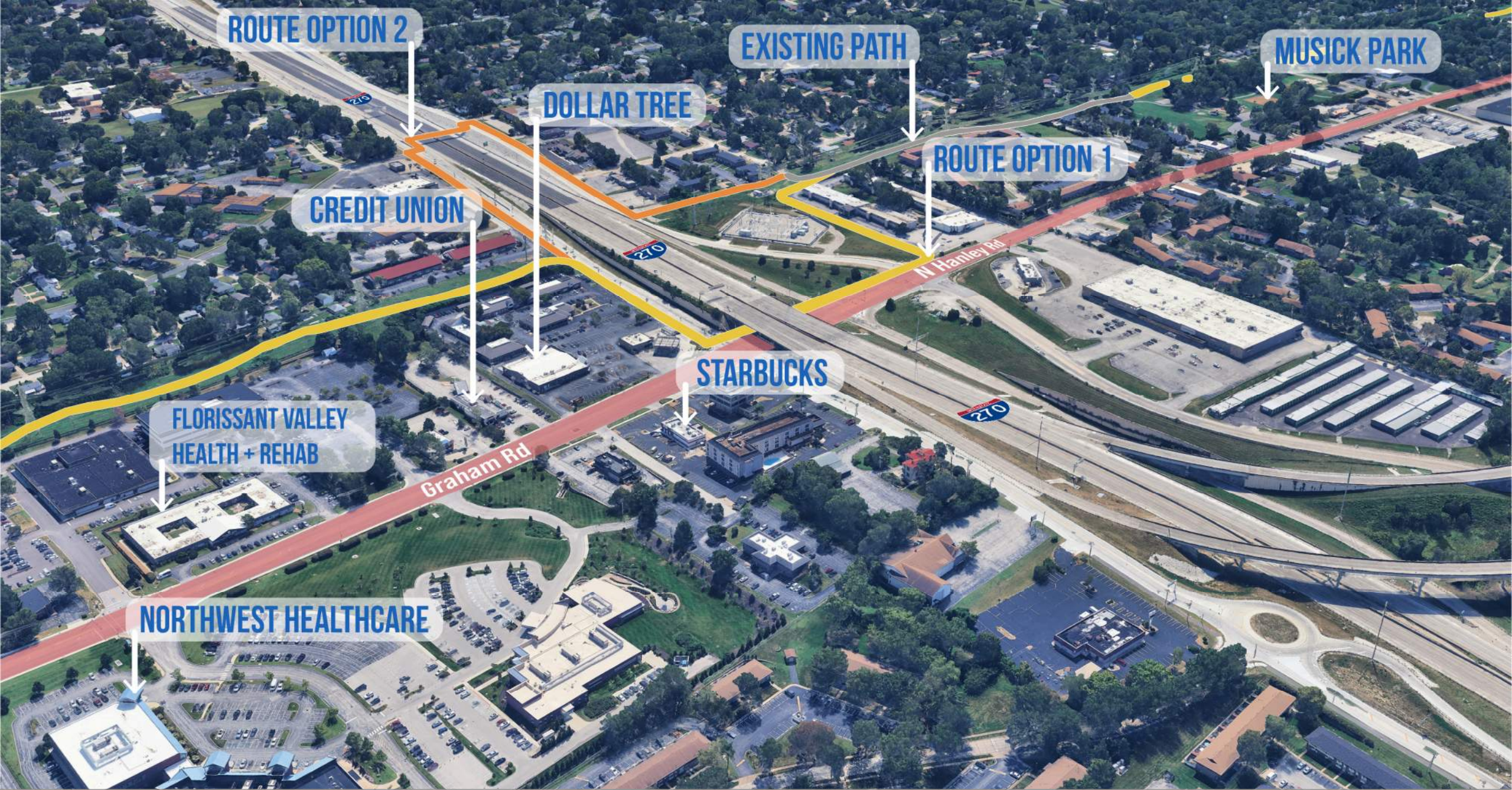
A & M MARKET

PROPOSED SUNSET GREENWAY ALIGNMENT

North Area



North Area



ROUTE OPTION 2

EXISTING PATH

MUSICK PARK

DOLLAR TREE

ROUTE OPTION 1

CREDIT UNION

STARBUCKS

**FLORISSANT VALLEY
HEALTH + REHAB**

NORTHWEST HEALTHCARE

Graham Rd

N Hanley Rd

North Area



North Area



North Area



North Area



Independence Park

Berkeley Elementary School

Berkeley Police Dept.

Berkeley Fire Dept.

Jackson Park

Berkeley City Hall

Shared Lane Marking
to Frostwood Park

City of Berkeley
owned property

Frostwood Park

Route Option 4

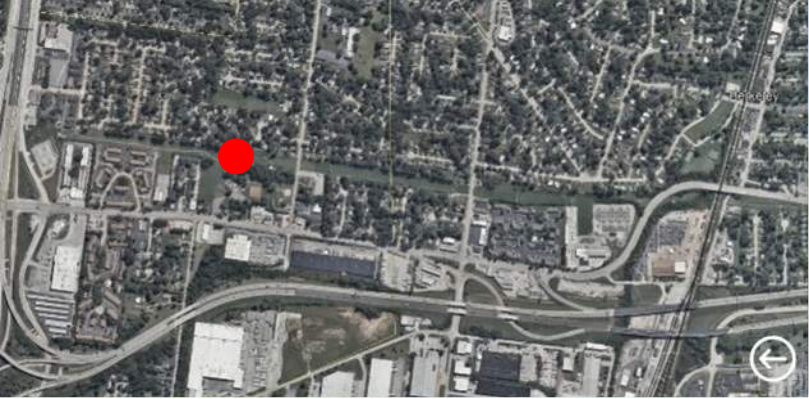
Existing Path

Musick Park

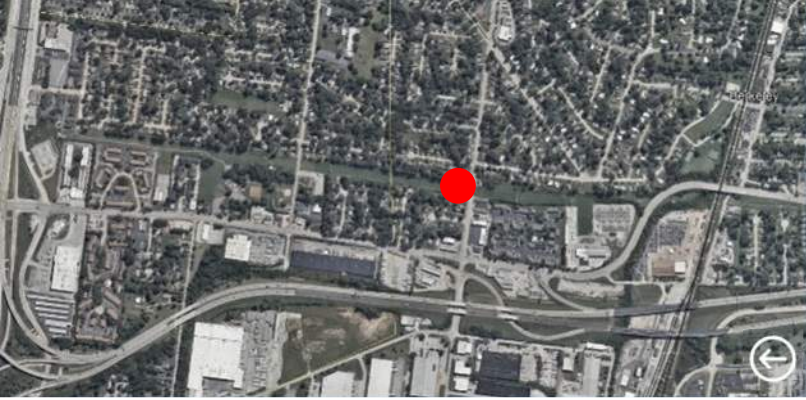
Route Option 1

Route Option 3

Middle Area



Middle Area



Middle Area



Middle Area



ROUTE OPTION 4

ROUTE OPTION 3

LIMITED SPACE

ADLER AVE

FROSTWOOD PARK

SHARED LANE MARKING

NORFOLK SOUTHERN RR

LINK TO PARK

SUBSTATION

N Hanley Rd

SPIRE

70

Middle Area



Middle Area



Middle Area



South Area



ROUTE OPTION 4

ROUTE OPTION 3

FUTURE MEMORIAL PARK

BERKELEY CIVIC CENTER

SLC DEPARTMENT OF PUBLIC HEALTH

4TH AVE

N Hanley Rd

Airport Rd

170

South Area



South Area



SCHNUCKS DISTRIBUTION CENTER

STAFF MARK

SCUDDER RD.

ROUTE OPTION 5

ROUTE OPTION 6

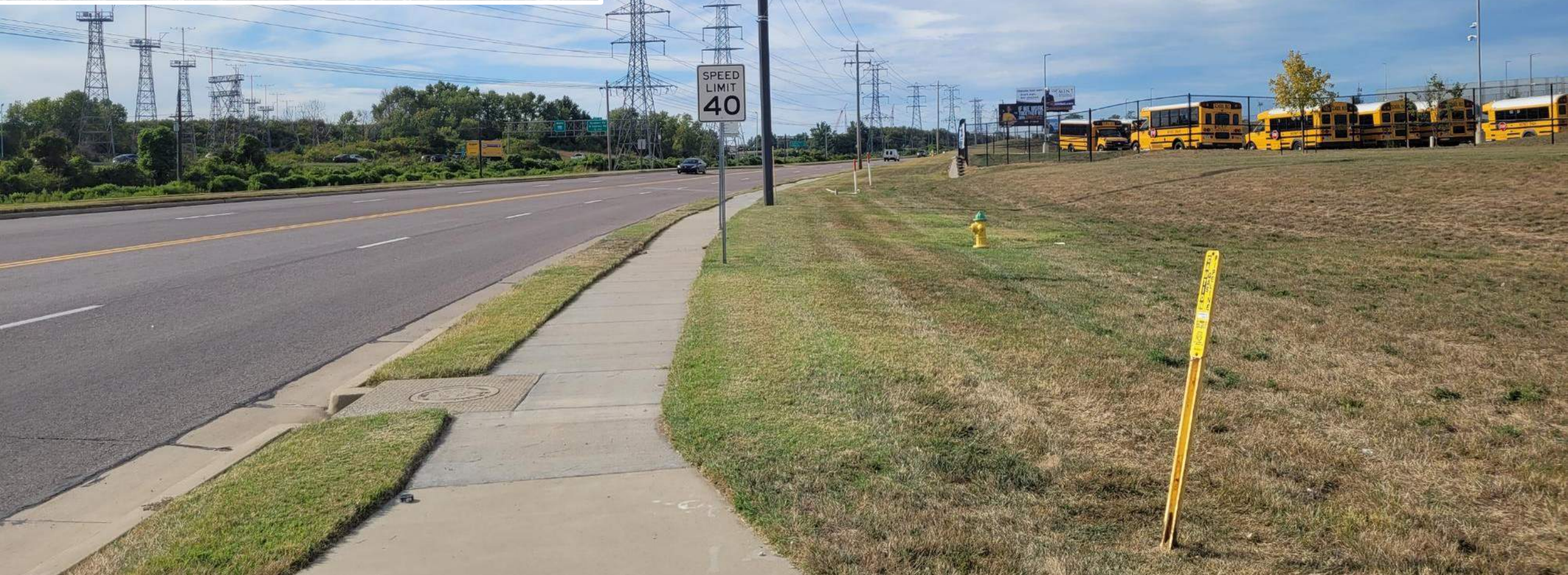
5TH AVE.

N Hanley Rd

Scudder Rd

Google Earth

South Area



South Area



South Area



Typical GRG Trail Features



Great Rivers Greenway

Questions & Answers



Next Steps

- **Review & Incorporation of Input**
- **Ameren Coordination**
- **Alignment Options Evaluation**
- **Intersection Safety Recommendations**





Great Rivers Greenway

Thank You



Key Strategic Group

Intuition & Logic, T² Traffic & Transportation