



Great Rivers Greenway

Tuesday, November 14, 2023
Committee of the Whole Agenda

Great Rivers Greenway
Committee of the Whole
District Offices, 3745 Foundry Way, Suite 253, St. Louis, MO 63110
TIME 10:00am

1. Opening of Meeting

A. Roll Call

B. CALL TO ORDER

Please note that the option to attend these meetings virtually is being provided as a convenience to the public and cannot be guaranteed. Virtual attendance may be unavailable for a variety of reasons, including, but not limited to, technical failures or limitations.

Please click this URL to join. <https://us02web.zoom.us/j/82477588238>
Description: 2024 Budget/Strategic Plan/Maline and Baltic Creek

Or One tap mobile:

+16469313860,,82477588238# US

+19292056099,,82477588238# US (New York)

Or join by phone:

Dial(for higher quality, dial a number based on your current location):

US: +1 646 931 3860 or +1 929 205 6099 or +1 301 715 8592 or +1
305 224 1968 or +1 309 205 3325 or +1 312 626 6799 or +1 719 359
4580 or +1 253 205 0468 or +1 253 215 8782 or +1 346 248 7799 or +1
360 209 5623 or +1 386 347 5053 or +1 507 473 4847 or +1 564 217
2000 or +1 669 444 9171 or +1 669 900 6833 or +1 689 278 1000

Webinar ID: 824 7758 8238

International numbers available:

<https://us02web.zoom.us/j/82477588238>

C. Approval of the Agenda

2. Presentation

A. 2024 Draft Budgets and Strategic Plan - Mike Carson

File Attachments

3. New Business

A. Referral of the 2024 Strategic Plan, Great Rivers Greenway Capital and Operating Budgets to the Board of Directors - Mike Carson

B. Referral of the draft 2024 Great Rivers Greenway Capital and Operating budgets and Comprehensive Capital Improvement Program Agreement (CCIPA) to the Board of Directors - Mike Carson

C. Review and Referral of Resolution 2023.82 approving the Maline Greenway: West Florissant Avenue to Bella Fontaine Park West Feasibility Study and Concept Plan and authorizing other actions as necessary to effectuate the same - Michael Steinlage



WHERE:

SUBPROJECT CODE	GREENWAY	SEGMENT	JURISDICTION(S)
296	Maline	West Florissant Avenue to Bella Fontaine Park West	St. Louis County

WHO:

STAFF	CONTRACTOR(S), VENDOR(S), PARTNER(S)	TYPE OF SERVICES/AGREEMENT
Michael Steinlage	n/a	n/a

FIRST CONTRACT WITH THIS ENTITY? (YES OR NO)	WHAT ARE THE DBE GOALS FOR THIS PROJECT?	IS THIS VENDOR A REGISTERED DBE OR ON A DBE LIST? LIST ALL THAT APPLY: WBE, MBE, OTHER	IF NOT REGISTERED, DOES THEIR OWNERSHIP REFLECT WOMEN OR MINORITIES? (PLEASE EXPLAIN)
n/a	n/a	n/a	n/a

PLEASE LIST ANY SUBCONTRACTORS BY NAME, % OF CONTRACT RECEIVED AND DBE STATUS	DOES THIS PROJECT HAVE WORKFORCE GOALS?
n/a	n/a

PROCUREMENT TYPE: RFQ, RFP, BID, VENDOR'S LIST, SOLE SOURCE, OTHER	PROCUREMENT MONTH/YEAR:	IF A CONTRACT RENEWAL, HOW MANY YEARS HAVE PASSED AND ARE LEFT?	# OF PROCUREMENT RESPONSES:
n/a	n/a	n/a	n/a

PROCUREMENT RESULTS DETAIL (BID RESULTS, SUMMARY OF INTERVIEWS, ETC)

n/a

WHAT:

ACTION TYPE	AMOUNT OF REQUEST	CURRENT BUDGETED FUNDS AVAILABLE	AMENDMENTS AND/OR SOURCES
Approval of feasibility study and concept plan	n/a	n/a	n/a

OUTSIDE RESOURCES, GRANTS OR IN-KIND SERVICES

n/a

WHEN:

BUDGET YEAR	CURRENT PHASE OF PROJECT	NEXT MILESTONE
2023	Planning	Design

WHY AND/OR HOW:

This action requests approval of the Feasibility Study and Concept Plan (the "Study") document prepared by Lochmueller Group, Inc. (Lochmueller) and its sub-consultants in connection with the Maline Greenway: West Florissant Avenue to Bella Fontaine Park West segment in St. Louis County.

BACKGROUND

In 2010 and 2011, Great Rivers Greenway (GRG) worked in partnership with the various municipalities of north St. Louis County to study the Maline Creek corridor. The study area covered a 1-mile wide area (1/2-mile on each side of the creek) and ran through portions of the cities of Berkeley, Kinloch, Ferguson, Jennings, Moline Acres, Bellefontaine Neighbors, Riverview, and St. Louis, as well as unincorporated St. Louis County. GRG staff worked with a Citizen Advisory Committee and a Technical Advisory Committee to develop the 2011 Maline Greenway Concept Plan, which now serves as the master

planning document that identifies the general alignment for the 8-mile long Maline Greenway.

The completed portion of Maline Greenway trail runs 2.12 miles from St. Louis County's Bella Fontaine West Park, eastward through Bella Fontaine Park, and ends at St. Cyr Road near where Maline Creek crosses from Bellefontaine Neighbors into the City of St. Louis. In 2024, GRG will begin constructing a separate 1.6-mile segment between the Ted Jones Trail and West Florissant Avenue in the City of Ferguson. Between these two (2) sections of trail is an approximately 2-mile gap within the cities of Ferguson, Jennings, and unincorporated St. Louis County. That gap has become project (296) Maline Greenway: West Florissant Avenue to Bella Fontaine Park West, which is the focus of this Board action.

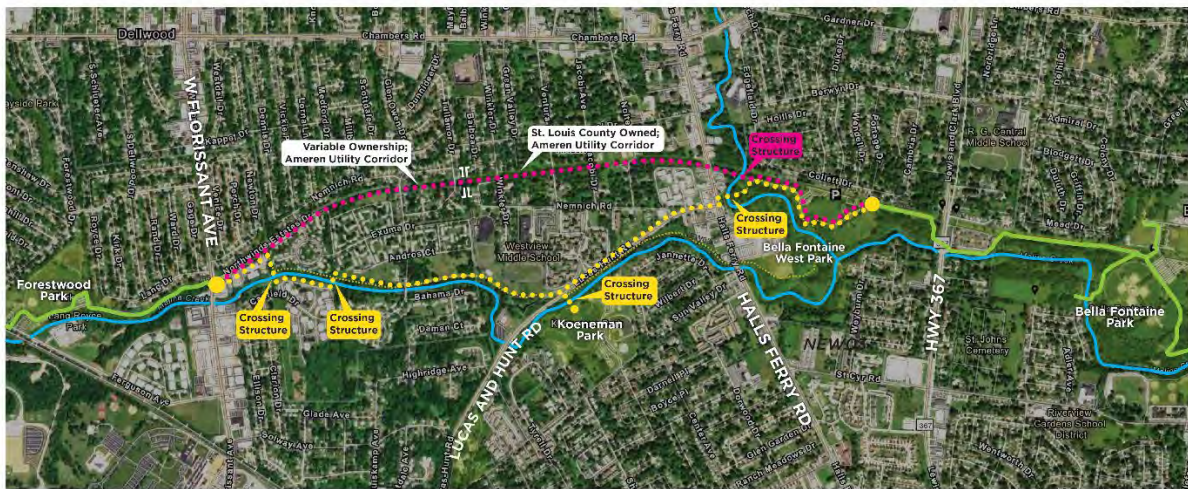
FEASIBILITY STUDY AND CONCEPT PLAN

The 2011 Maline Greenway Concept Plan identified a creek side alignment that would cover this 2-mile gap. Due to severe site constraints such as flooding, floodplain permitting, and environmental safety concerns, an alternative alignment was also identified for planning phase analysis (see first map graphic). In August 2022, GRG staff procured a consultant team led by Lochmueller and Vector Communications Corporation to begin the process of exploring and analyzing greenway route options along the two (2) main corridors under consideration. Over the course of a year, the feasibility study process weaved together technical analysis and evaluation with community engagement and input at every step along the way. The team collaborated heavily with St. Louis County and the cities of Ferguson and Jennings, local schools, and the local police departments. Most importantly, a Community Advisory Committee comprised of elected officials, local residents, and regional stakeholders helped guide the collection of data and analyze results to ultimately generate a recommended final alignment to be developed further in the design phase.

The Study evaluated potential greenway alignments, trailhead configurations, neighborhood connections, crossing strategies and integration opportunities with adjacent development projects. Community feedback, risk assessments, cost estimates, utility coordination, environmental impact and experiential factors were weighed in determining final recommended greenway alignment (*see the second map graphic*). The greenway primarily follows an Ameren operated aerial utility easement through a strip of land owned by St. Louis County Parks. The proposed trail corridor traverses through mostly publicly owned land and only five (5) privately owned parcels. This provides opportunities for the greenway to create an unique linear park experience for users while directly connecting to seven (7) residential streets in the

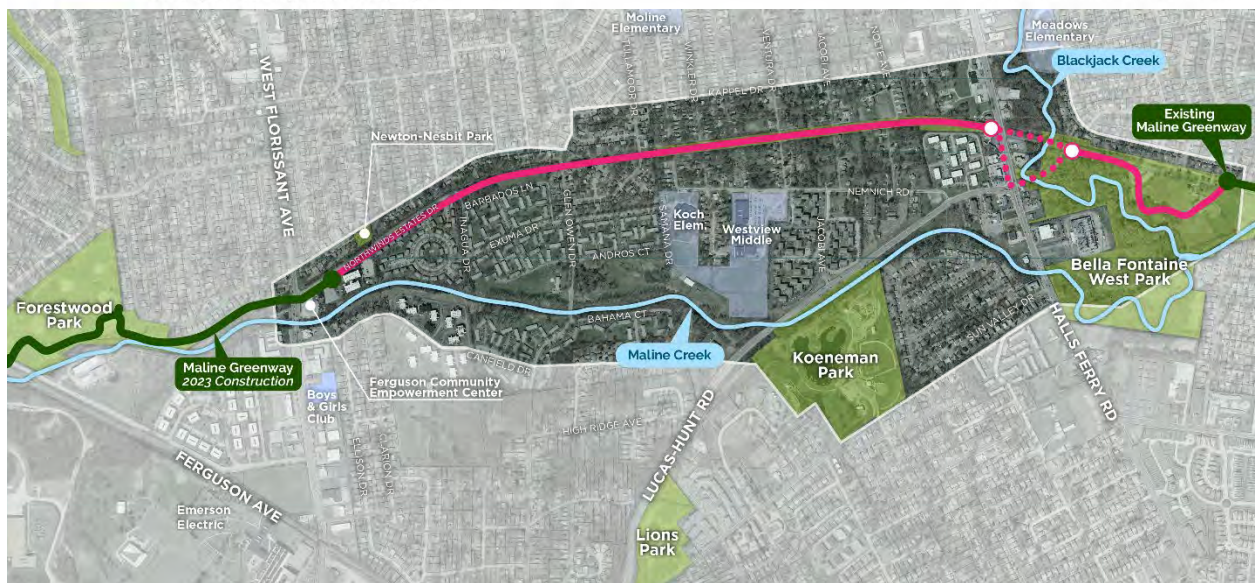
neighborhood west of Halls Ferry Road. The final recommendation for how the greenway will cross Halls Ferry Road will be made through a future scope of work procured at the start of 2024, subject to future Board approval. Options include an at-grade crossing at the intersection with Lucas-Hunt Road, as well as a grade-separated bridge structure over Halls Ferry Road itself.

Staff recommends approval of the Study. At the beginning of 2024, additional scopes of work will be brought to the Board for future consideration and will include design phase services included in GRG's typical professional services scope template.



- 2011 Master Plan Alignment
- 2022 Alternate Alignment (Ameren Aerial Utility Corridor)
- Existing or "Coming Soon" Greenway

Maline Greenway (296) Alignment Options



RELEVANT RESOLUTIONS:

RESOLUTION #	DESCRIPTION
2010.43	Contract with Woolpert for 2011 Maline Greenway Concept Plan
2022.48	Contract with Lochmueller Group for planning services

RESOLUTION APPROVING THE MALINE GREENWAY: WEST FLORISSANT AVENUE TO BELLA FONTAINE PARK WEST FEASIBILITY STUDY AND CONCEPT PLAN AND AUTHORIZING OTHER ACTIONS AS NECESSARY TO EFFECTUATE THE SAME.

WHEREAS, the Metropolitan Park and Recreation District d/b/a The Great Rivers Greenway District (the “District”) is a metropolitan park and recreation district authorized under Section 67.1700 to 67.1769 of the Revised Statutes of Missouri, as amended (the “District Act”);

WHEREAS, pursuant to the Clean Water, Safe Parks, and Community Trails Initiative (“Proposition C”), the qualified voters of St. Louis County, St. Charles County, and St. Louis City approved the creation of the District;

WHEREAS, the District was formed to undertake the development, operation and maintenance of a public system of interconnecting trails and parks throughout the areas and counties comprising the District (the “District’s Mission”);

WHEREAS, in furtherance of the District’s Mission, and in accordance with the Bylaws of the District, the District adopted “Building the River Ring” as the Regional Plan for the District, and which contains the comprehensive plan of the District, its existing and proposed interconnecting greenway, park and trail projects, and any proposed land acquisitions (the “River Ring Regional Plan”);

WHEREAS, the Maline Greenway is shown as a regional greenway in the River Ring Regional Plan (the “Maline Greenway”);

WHEREAS, the District desires to extend and improve the River Ring in furtherance of the River Ring Regional Plan by developing a Feasibility Study and Concept Plan to connect West Florissant Avenue to Bella Fontaine Park West (the “Project”);

WHEREAS, Lochmueller Group, Inc. and Vector Communications Corporation have completed their work on the Feasibility Study and Concept Plan;

WHEREAS, the Feasibility Study and Concept Plan was presented to and accepted by the District's Planning Committee on November 14, 2023;

WHEREAS, pursuant to the approval of the Safe and Accessible Arch and Public Parks Initiative ("Proposition P") and Section 67.1712.2 of the District Act, the governing bodies of St. Louis City and St. Louis County imposed a three-sixteenths of one cent sales tax for the purpose of funding the operation and maintenance of the portion of the District located within St. Louis City and St. Louis County;

WHEREAS, the 2023 GRG 3/16 Capital Budget was approved by the District pursuant to Resolution 2022.89;

WHEREAS, the 2023 GRG 3/16 Capital Budget included line item (296) for the Project;

WHEREAS, at a meeting of the Board of Directors of the District (the "Board"), convened at 11:30 am, on November 14, 2023, at the District Offices at 3745 Foundry Way, St. Louis, Missouri, at which was present a quorum of the Board, the Board took the action further described herein.

NOW, THEREFORE, BE IT RESOLVED BY THE BOARD OF DIRECTORS OF THE METROPOLITAN PARK AND RECREATION DISTRICT D/B/A THE GREAT RIVERS GREENWAY DISTRICT AS FOLLOWS:

1. The Board hereby approves the Maline Greenway Feasibility Study and Concept Plan.
2. The Board authorizes the Chief Executive Officer or her designees to take such further action, and execute such other documents, certificates and instruments as may be necessary or desirable to carry out and comply with the intent of this Resolution.
3. All actions heretofore taken by the officers, agents, and employees of the District related to the transactions contemplated by this Resolution are hereby ratified and confirmed.
4. The portions of this Resolution shall be severable. In the event that any portion of this Resolution is found by a court of

competent jurisdiction to be invalid, the remaining portions of this Resolution are valid, unless the court finds the valid portions of this Resolution are so essential and inseparably connected with and dependent upon the void portion that it cannot be presumed that the Board would have enacted the valid portions without the invalid ones, or unless the court finds that the valid portions standing alone are incomplete and are incapable of being executed in accordance with the legislative intent.

5. This Resolution shall be in full force and effect immediately from and after its adoption as provided by law.

ADOPTED this 14th day of November, 2023.
**METROPOLITAN PARK AND RECREATION DISTRICT
D/B/A THE GREAT RIVERS GREENWAY DISTRICT**

Monica M. Huddleston, President

ATTEST:

Glenn Powers, Secretary

Vote:

Aye:

Nay:

Abstain:

Absent:

Not Present:

D. Presentation of the Baltic Creek Greenway Master Plan for future consideration and referral to the Board of Directors -- Mark Vogl

4. Closed Session

A. CLOSED SESSION NOTICE

The Board of the Metropolitan Park and Recreation District, d/b/a Great Rivers Greenway, may go into closed session at this meeting if such action is approved by a majority vote of the Board members who constitute a quorum, to discuss legal, confidential or privileged matters under RSMo. §610.021(1); leasing, purchase or sale of real estate under §610.021(2); personnel actions under §610.021(3); specifications for competitive bidding under §610.021(11); sealed bids under §610.021(12); personnel records under §610.021(13); or records under §610.021(14) which are otherwise protected from disclosure by law; or confidential or privileged communications with the District's auditor, including auditor work products under §610.021(17).

TO LEARN MORE ABOUT RSMo. 610, [click here](#).

5. Adjournment

A. Adjourn the meeting