

# Great Rivers Greenway

## REPORT TO THE COMMUNITY *Summer 2020*

I hope this message finds you and yours safe and in good health. Despite much uncertainty, we will work with you and our partners to meet the challenges of 2020. Progress continues on our projects despite the pandemic. Our board and staff are committed to our role in the work to dismantle systemic racism (hold us accountable: <https://bit.ly/DEIGRG>). Join us in listening, learning and taking action to move forward.

Over the past 20 years, we have built 128 miles of greenways for and with the people we serve. We've worked on our internal systems to steward your investment with equity in mind and we continue to work with partners to build, promote and sustain the greenways through meaningful collaborations.

As always, we invite you to continue to engage with us, donate, volunteer and of course, keep enjoying those greenways. Cheers to 20 more years of making this incredible region an even more vibrant place to live, work and play by doing this good work together!

With sincere gratitude,



**Susan K. Trautman**  
Chief Executive Officer  
Great Rivers Greenway



**Jim Hall**  
Board President  
Great Rivers Greenway

### Gravois Greenway: Grant's Trail Gains 2.2 Miles to Explore & Enjoy!

Despite historic rain and flooding, the long-awaited Gravois Greenway: Grant's Trail to River des Peres connection is 95% complete! This project combined federal and local public funding, community input and the generosity of the philanthropic community to link St. Louis city and county, 6 municipalities, 6 parks, historic sites, libraries, community centers, public transit and small businesses along the way of *22 miles of connected greenway!*



#### BAYLESS BRIDGE

A 600-foot bridge provides a seamless connection over Bayless Avenue, keeping greenway visitors separate from the busy intersection below.

#### RECYCLING HUB

Republic Services' donation of an easement not only allowed for the greenway to be constructed through their property, but also lets people deposit glass, paper or plastic directly into the recycling stream.

#### WETLAND RESTORATION

Thanks to generous donors, an overgrown industrial lot has been restored to a wetland, complete with a boardwalk and native plants. It's a welcoming space and healthy habitat for people & animals alike!

#### RIVER DES PERES BRIDGE

A 303-foot bridge over the River des Peres is the pivotal link connecting two greenways! This bridge has three spans; one has been set and the others will go in as soon as water levels recede.



# Progress Across the Region

2019

P

B

C

E

2020

P

B

C

E

PLAN

BUILD

CONSERVE

ENHANCE

For the full 2019 Annual Report with project descriptions, photos and all the financials, visit:  
[www.GreatRiversGreenway.org/2019](http://www.GreatRiversGreenway.org/2019)



# 94¢

## of every dollar

spent in 2019 went back to the community to build, promote and sustain your network of greenways.

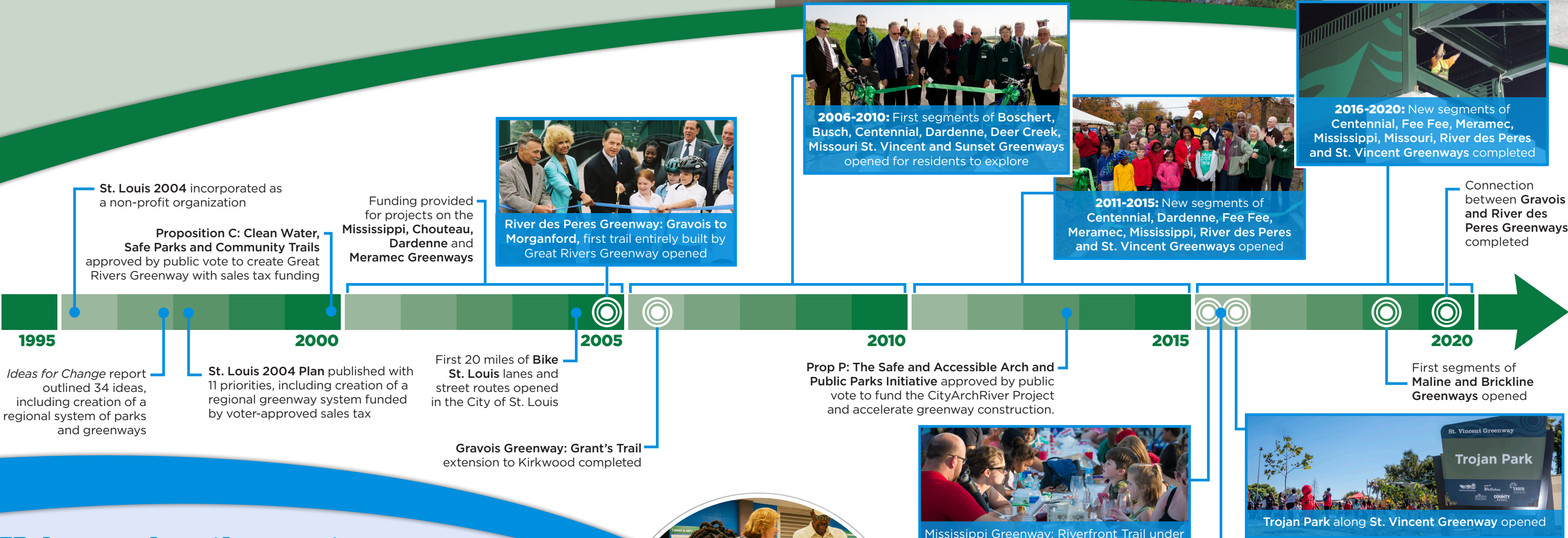




# Celebrating 20 Years!

In 2000, the people of St. Louis City, St. Louis County and St. Charles County voted for and invested in a clear, bold vision — *a dynamic network of parks and open spaces linked together by greenways, connecting our communities with healthier habitats and watersheds along the way.*

**This year we celebrate twenty years of planning, building and caring for 128 miles (and counting) of greenways in partnership with people, partners and donors across the region.**



## Help us plan the next 20 years of Great Rivers Greenway!

As we do every five years, we'll soon be gathering input from you — *our partners and community members* — to help us update our regional plan. Your voices will help ensure that we are delivering on your vision for the greenways. Stay tuned for opportunities to share your feedback and get involved in this process to help shape the next 20 years!





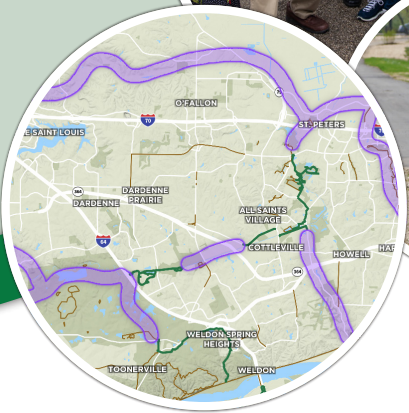
# Recent Highlights

## MALINE GREENWAY OPENING

Completed first phase of Maline Greenway-1.6 miles of new and refurbished walking and biking paths, three bridges and an underpass beneath Highway 367-seamlessly connecting both sides of the park.

## ST. CHARLES COUNTY GREENWAY MASTER PLAN

Launched a year-long community-driven planning process to guide the next phase of greenway development in St. Charles County. When complete, we'll have an updated greenway map with prioritized projects and partnership models for building future greenway segments.



# Great Rivers Greenway Foundation

The Great Rivers Greenway Foundation is a 501(c)3 nonprofit organization that engages private support to help fund greenway and conservation projects. In light of the projected reduction in sales tax revenues, the Foundation will be working with donors, foundations, and corporations to find alternate funding and help bridge the gap. Some highlights of the Foundation's recent work:

- » Raised \$2 million to expand Gravois Greenway: Grant's Trail, including transforming a vacant lot into a restored wetland adding a boardwalk and native plantings
- » Privately funded one half of the soon-to-be-constructed St. Vincent Greenway from Trojan Park to Eskridge High School
- » Funded the Brickline Greenway framework plan via corporate, foundation and individual donations
- » Expanded the number of donors to the Foundation by 35%, enabling our team to complete more conservation projects such as the removal of invasive species and replacing them with native plantings along the Mississippi and St. Vincent Greenways!

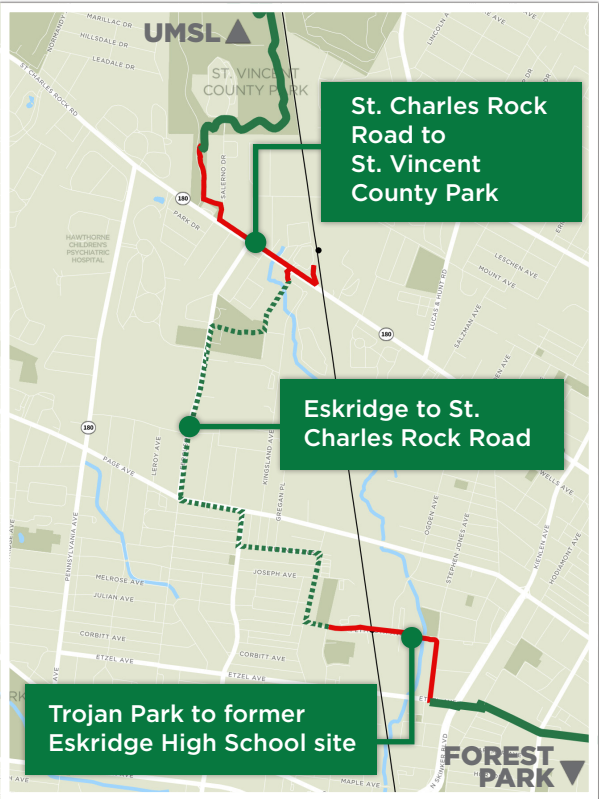


# Upcoming Project Highlight

## ST. VINCENT GREENWAY

We are working with many partners to close the gap on the St. Vincent Greenway. When complete, the greenway will stretch between Forest Park at Lindell through the University of Missouri-St. Louis Campus to the North Hanley MetroLink. We'll complete this greenway in three phases:

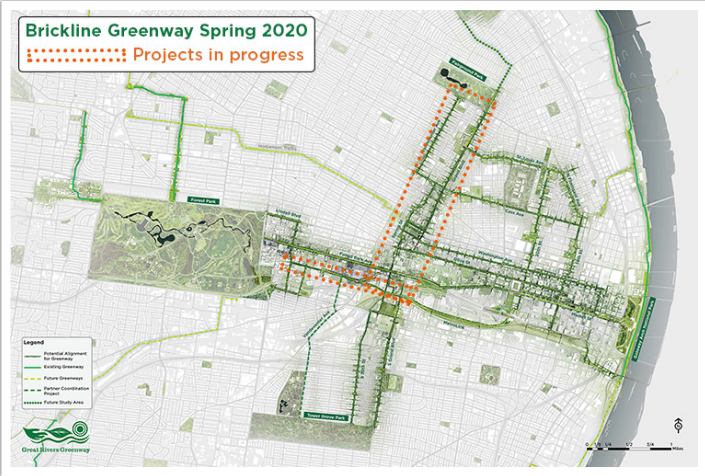
- 1. Trojan Park to former Eskridge High School site:** Plans are complete and we'll break ground on the 0.75 mile expansion from Trojan Park later in 2020.
- 2. Eskridge to St. Charles Rock Road:** The Pagedale community identified the preferred route for the greenway from the former Eskridge High School to St. Charles Rock Road. We are working through the design phase to prepare the project for construction in 2022.
- 3. St. Charles Rock Road to St. Vincent County Park:** A 0.5 mile stretch of new greenway—with a direct connection to the St. Charles Rock Road Metro Station—will be completed as part of Missouri Department of Transportation's improvements to St. Charles Rock Road.



# Brickline Greenway Update

In 2019, we invited people across the region to submit ideas for a new name for what had been called the Chouteau Greenway to better capture the scope, spirit and impact of this project. More than 1,000 names were submitted in just three months! Working Group members narrowed them down and the Great Rivers Greenway Board of Directors made Brickline Greenway official in March 2020.

Next steps include finishing the concept design with in-depth engagement in neighborhoods (see map for geography), developing a fundraising plan and creating a brand with the new name. Learn more about this project at [BricklineGreenway.org](https://BricklineGreenway.org)



# Kiener Plaza and Gateway Arch National Park

With the goal of ensuring an excellent visitor experience, we're moving forward with plans for a new guest services building on the north side of Kiener Plaza. The remainder of CityArchRiver funds, set aside exclusively for this project area, will be used for landscaping improvements on the Gateway Arch Park grounds. One of these projects—setting granite pavers along the walkways and around the tree beds—will fully realize an unfinished element of Eero Saarinen's original design!



GREAT PROGRESS  
CONTINUES TOWARD  
COMMUNITY VISION  
FOR A VIBRANT AND  
CONNECTED REGION.  
*Learn more inside!*



3745 Foundry Way, Suite 253  
St. Louis, MO 63110  
www.greatriversgreenway.org  
314-436-7009



Great Rivers Greenway

## GREENWAY UPDATES

