

ABOUT THIS TRAIL

The St. Vincent Greenway loop route takes you around St. Vincent County Park through woodland habitats, prairie restoration, and along parts of Engelholm Creek.

LENGTH: 1.8 miles around the entire loop. You can always enjoy a shorter or longer adventure by exploring a smaller or larger part of this greenway.

PARKING: Parking is available within the park at the tennis courts, the community center, and the picnic shelter.

RESTROOMS: Located near the tennis courts, near the picnic shelter, and in the community center.

GREENWAYS

Greenways are outdoor spaces that connect people and places. Each greenway is unique and reflects its surrounding community. All greenways have:

- Trails where you can walk, run, ride a bike, push a stroller, use a wheelchair, and walk a dog (on a leash!)
- Conservation projects that restore habitats like prairies, forests, and wetlands and use nature to manage stormwater
- Amenities such as playgrounds, public art, benches, and restrooms
- Connections to parks, neighborhoods, waterways, businesses, and other destinations

To learn more about the 135+ miles of greenways throughout St. Louis City, St. Louis County, and St. Charles County, visit:

www.GreatRiversGreenway.org

Designed and illustrated by Mike Murawski & Bryna Campbell with Super Nature Adventures.



BIRD SOUNDS



- 1 Find a spot to sit, like on a bench or in the grass.
- 2 Close your eyes. Take some time & listen to the birds around you.
- 3 Where are the bird sounds coming from? What do they sound like? What is your favorite sound?

TREE DETECTIVE

Can you find these amazing trees on your greenway adventure?

HINT: Look carefully at their leaves.



Black Walnut

- These large trees have grayish-brown or dark bark.
- The leaves are made up of many smaller leaves, or leaflets, arranged in pairs along a long stem.
- Walnut seeds form in September and October with a green outer husk and a dark brown or black nut inside.

Cottonwood

- These tall trees grow quickly and can thrive along creeks and other wet areas.
- Notice the heart-shaped leaves with flat petioles that flutter in the wind.
- This tree's name comes from the strands of fluffy white seeds that form in late spring.



HEALTHY HABITATS

You might notice newly planted native plants along the greenway. These help create food and habitats for pollinators and other wildlife. They also help prevent erosion, sustain soil, and keep streams clean.

As you go between these different habitats, what differences do you notice? What kinds of wildlife? Insects? Plants?

In the PRAIRIE, I notice...

In the FOREST, I notice...

In the WETLAND, I notice...

ZOOM IN

Find something interesting?
Look closely & draw what you see.

GREENWAY ADVENTURE MAP

St. Vincent Greenway

IN ST. VINCENT COUNTY PARK

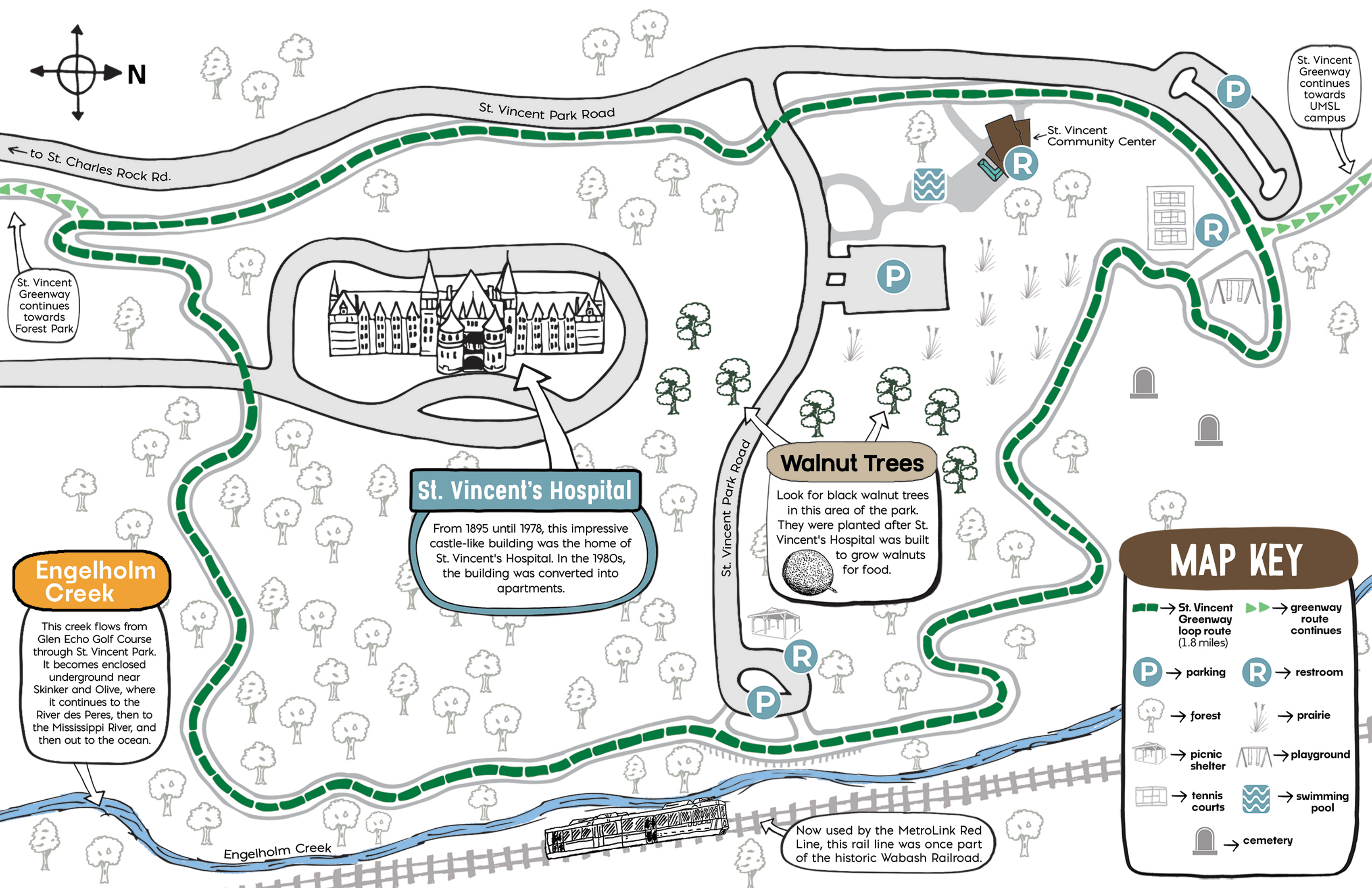
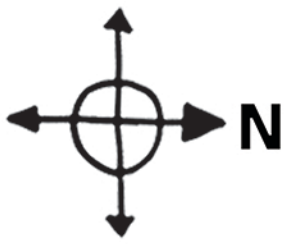


Great Rivers Greenway

For more information and to plan your greenway visit, go to:

www.GreatRiversGreenway.org

LIVE LIFE OUTSIDE



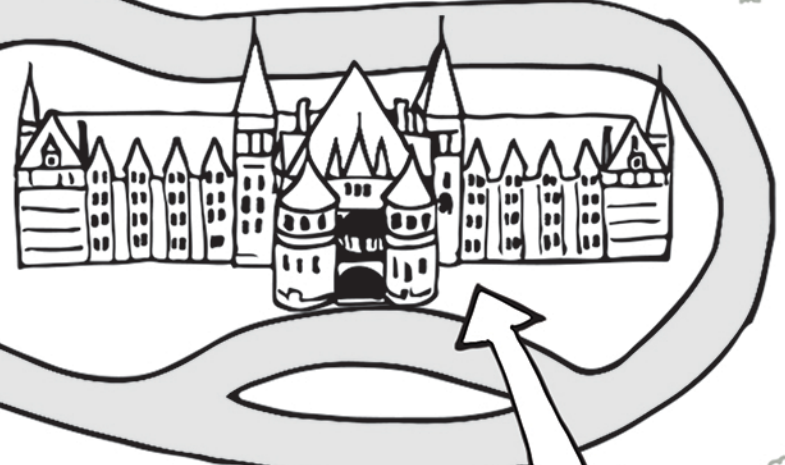
← to St. Charles Rock Rd.

St. Vincent Park Road

St. Vincent Community Center

St. Vincent Greenway continues towards UMSL campus

St. Vincent Greenway continues towards Forest Park



St. Vincent's Hospital
From 1895 until 1978, this impressive castle-like building was the home of St. Vincent's Hospital. In the 1980s, the building was converted into apartments.

Walnut Trees
Look for black walnut trees in this area of the park. They were planted after St. Vincent's Hospital was built to grow walnuts for food.



Engelholm Creek

This creek flows from Glen Echo Golf Course through St. Vincent Park. It becomes enclosed underground near Skinker and Olive, where it continues to the River des Peres, then to the Mississippi River, and then out to the ocean.

Engelholm Creek

Now used by the MetroLink Red Line, this rail line was once part of the historic Wabash Railroad.

MAP KEY

- St. Vincent Greenway loop route (1.8 miles)
- greenway route continues
- P → parking
- R → restroom
- forest
- prairie
- picnic shelter
- playground
- tennis courts
- swimming pool
- cemetery