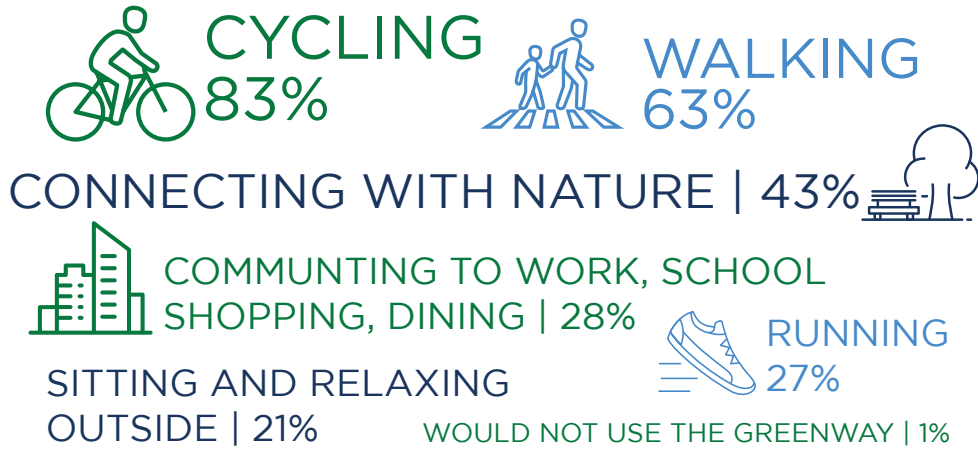


Centennial Greenway in Olivette

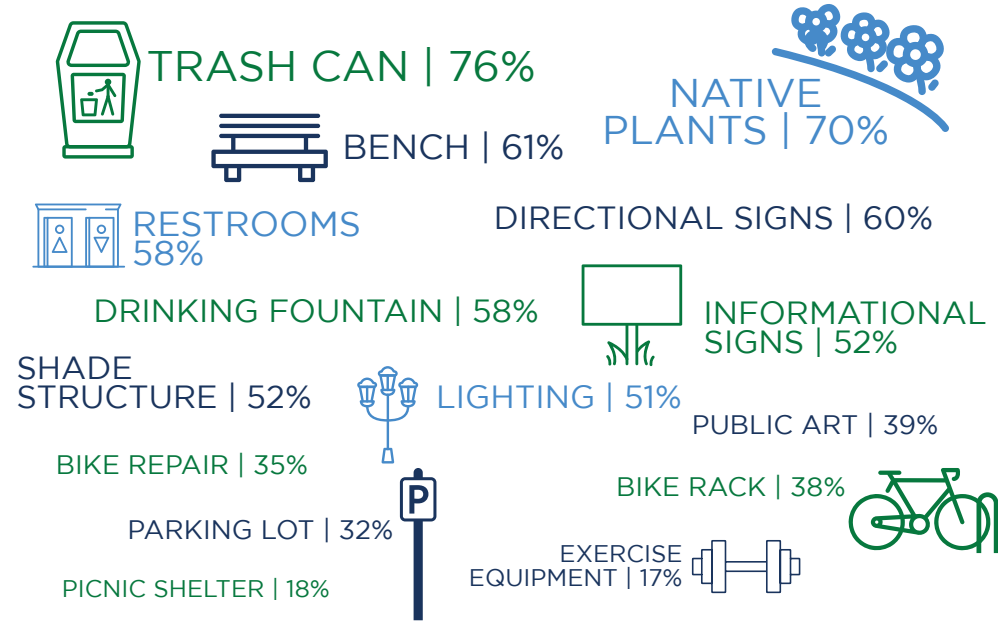
SURVEY SUMMARY

96% Have visited a greenway in St. Louis City, St. Louis County, or St. Charles County

How would you use the Centennial Greenway in Olivette?



Which amenities would you use and/or enjoy on the Centennial Greenway in Olivette?

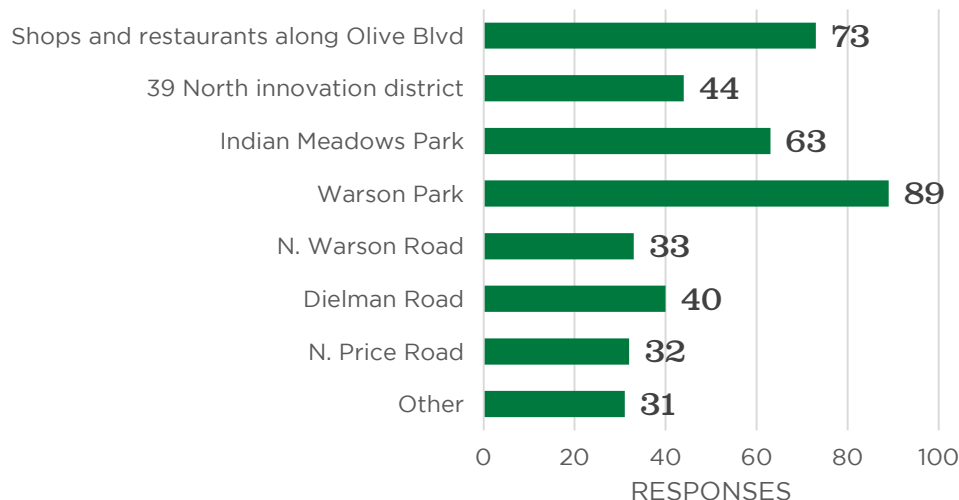


Think about your favorite outdoor space such as a park, trail or greenway. What makes this place special to you?

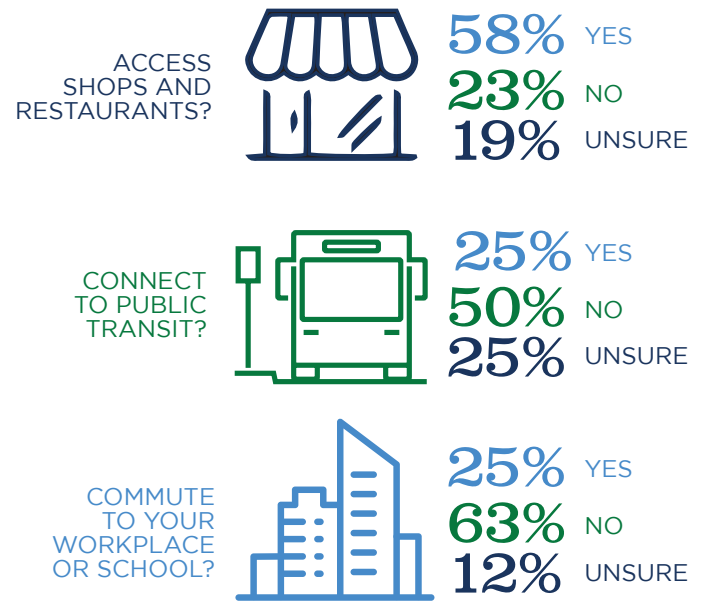
Highest Ranked Key Themes:

Walk Trail Nature
Traffic Shade Safe
Trees Place Bike Park

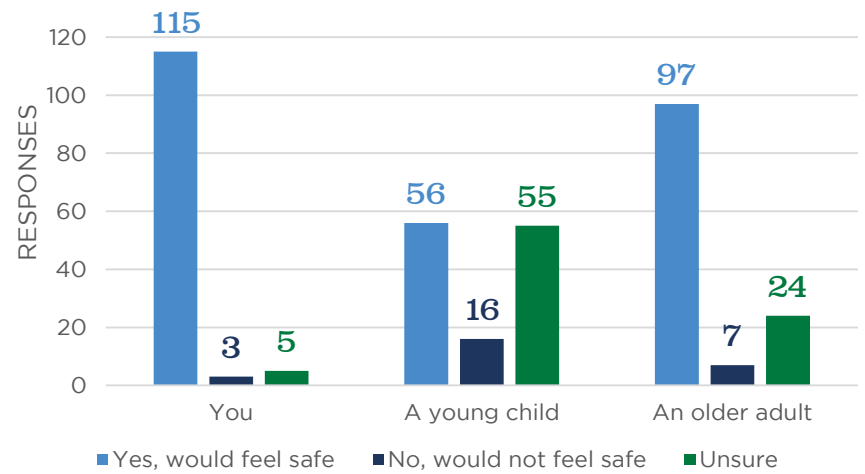
Where are the places you would like to go on the Centennial Greenway in Olivette? Please include the places where you would like to access this greenway.



Would you use the Centennial Greenway in Olivette to:

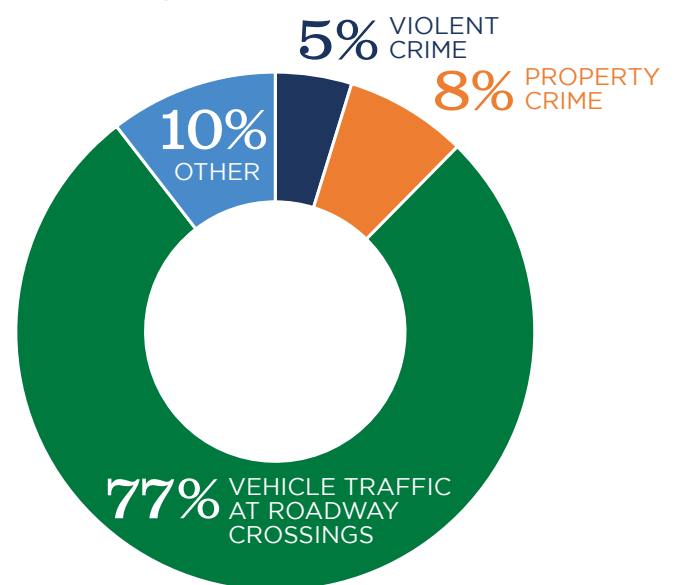


Based on what you know about the plan for the Centennial Greenway in Olivette, do you think each of these individuals would feel safe visiting this greenway?



64% Have changed the way they use outdoor spaces due to COVID-19

If you have any safety concerns about the Centennial Greenway in Olivette, what are they?



"The biggest issue is the street crossings at Olive and 170."

"Provide clear signaling for both vehicles and trail users at Olive crossings."

"People visibility and presence on the trail."

"This connection is crucial to many commuters and will make the access to greenways a more equitable experience for many"

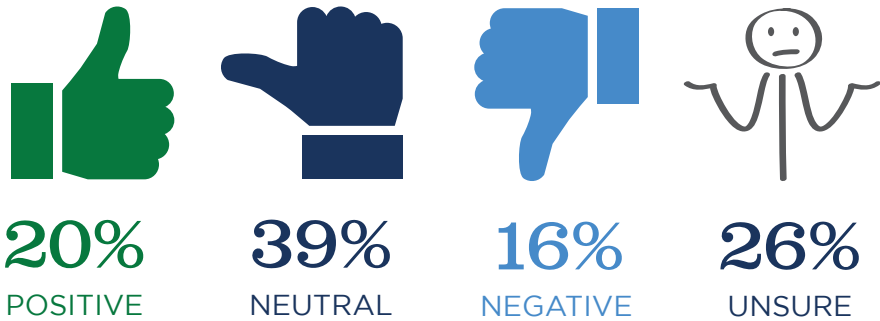
80%

Would use the Centennial Greenway in Olivette to visit Warson Park or Indian Meadows Park

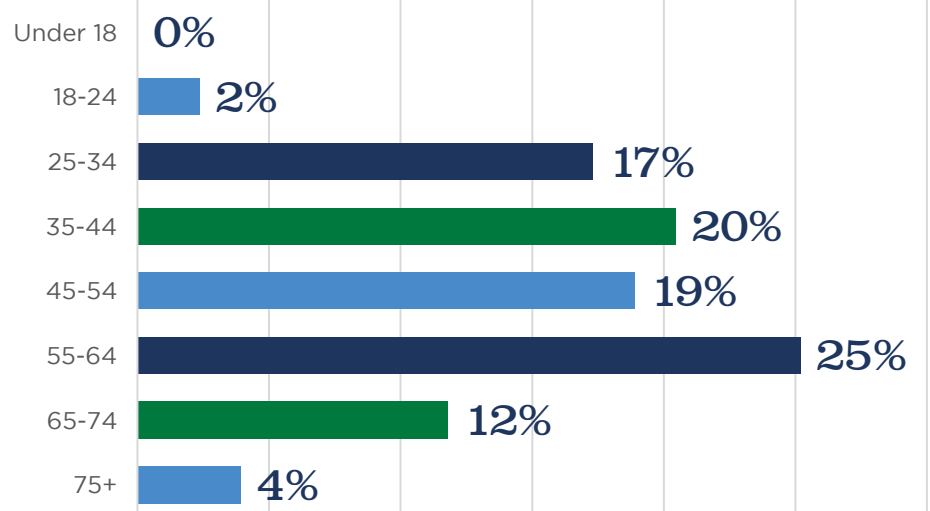
Zip code of survey respondents

130 RESPONSES | 44% FROM 63132 | 31 UNIQUE ZIP CODES

What is your perception of the River des Peres in Olivette?

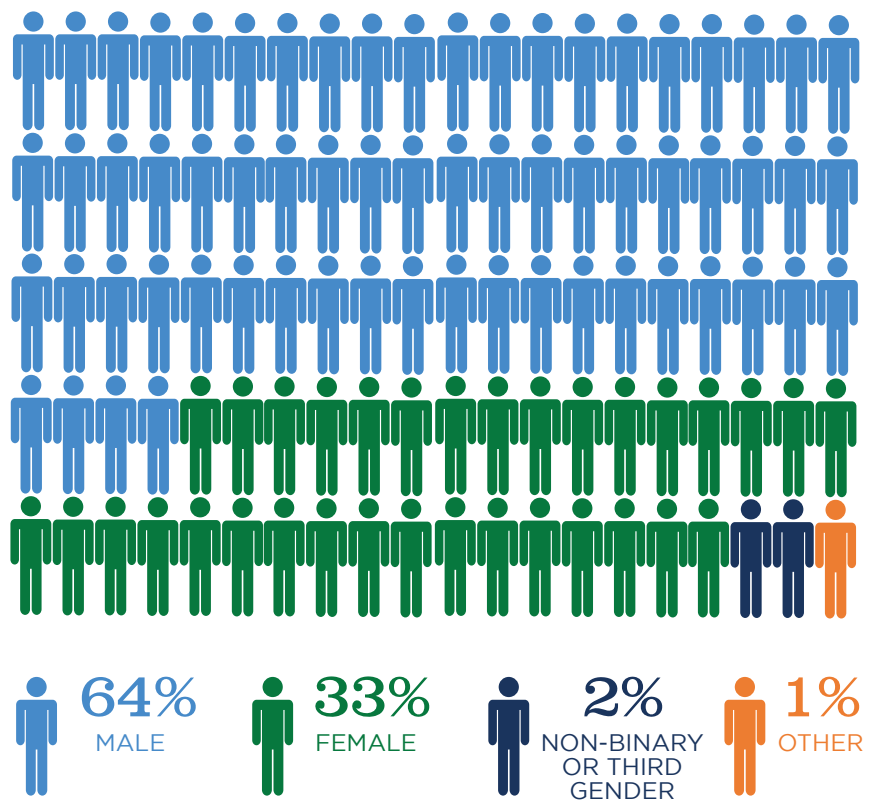


Age of survey respondents

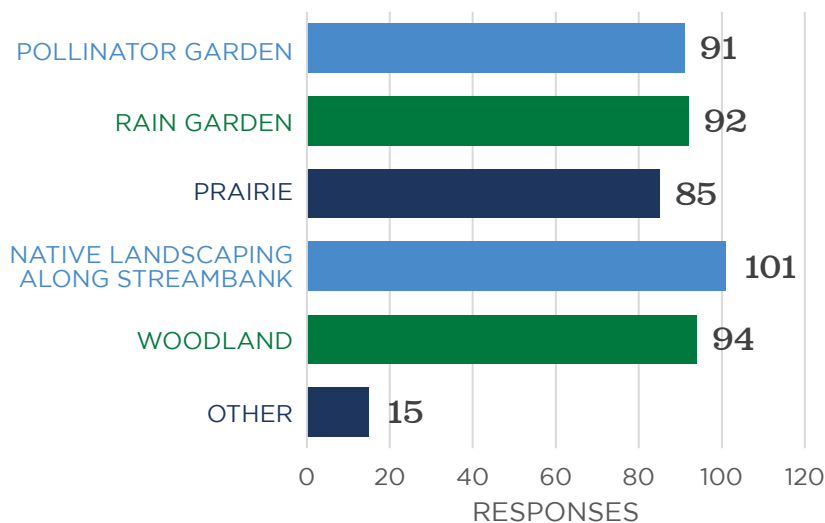


"Bike and Pedestrian paths are great assets. They provide safe and convenient ways for people to get recreation and circulate through the city in a fun, healthy way. - good for them, good their communities, and good for the planet."

Gender of survey respondents

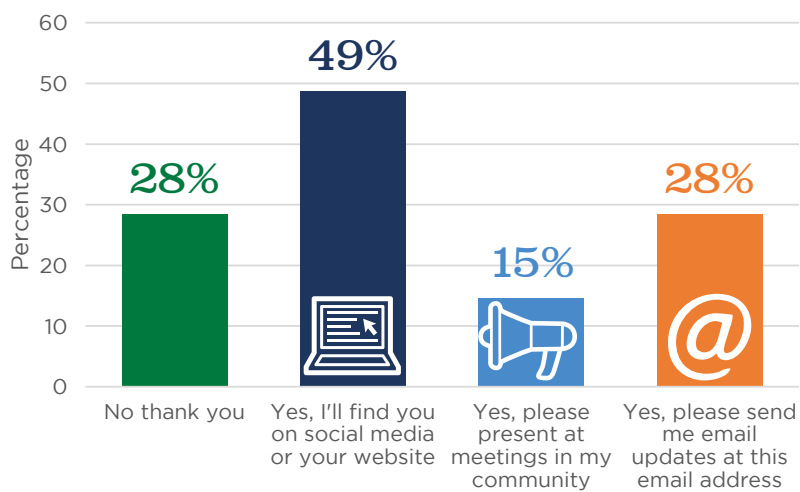


What natural features would you like to visit along the Centennial Greenway in Olivette?



"I often ride from my home in West County to Forest Park or downtown. Greenways make such a ride safer and more enjoyable."

Would you like to receive more information about greenways throughout the St. Louis region?



Race/ethnicity of survey respondents

