



For a clean, green, connected St. Louis region

2005 Annual Report



For a clean, green, connected St. Louis region

2005 Annual Report

The Great Rivers Greenway District

1000 St. Louis Union Station

Suite 102

St. Louis, Missouri 63103

www.greatrivers.info

Table of Contents

Letter from the Executive Director and Board President	
<i>Many Reasons to Celebrate Our First Five Years</i>	1
Project Highlights for 2005	2
2005 – Partnership Projects	5
2005 – Financial Report	10

**The Great Rivers Greenway District
– Board of Directors**

Michael Murray, *President – St. Louis City*
David Rosenberg, *Vice President – St. Louis County*
Pauline Smith, *Secretary – St. Louis City*
Anne Zerr, *Treasurer – St. Charles County*
Jim Hall – *St. Louis County*
Anne Klein – *St. Charles County*
Judith Metzger – *St. Louis County*
Charles Nicasastro – *St. Louis County*
Neal Perryman – *St. Louis City*
The Honorable Phyllis Weber – *St. Louis County*

Board of Directors Whose Terms Expired in 2005

Richard Ash – *St. Charles County*
Timothy Bolt – *St. Louis City*

The Great Rivers Greenway District – Staff

David Fisher – *Executive Director*
Todd Antoine
Glenna Brown
Patrick Owens
Nancy Ulman
Janet Wilding

County Executives

The Honorable Charlie Dooley
County Executive, *St. Louis County*
The Honorable Joseph Ortwerth
County Executive, *St. Charles County*
The Honorable Francis Slay
Mayor, *St. Louis City*

Citizen and Technical Advisory Committees

The Great Rivers Greenway collaborated with the region’s citizens to provide an opportunity to share their communities’ desires and concerns. Many interested participants served on Citizen Advisory Committees in 2005 and assisted with the development of greenway plans. In addition, a team of public, private and nonprofit organizations served on Technical Advisory Committees to provide a local level of expertise. Great Rivers Greenway appreciates the time and dedication from the committee members who assisted on the following projects in 2005:

- Centennial Greenway
- Shady Creek Greenway
- St. Vincent Greenway

Many Reasons to Celebrate Our First Five Years

The Great Rivers Greenway District has many reasons to celebrate its first five years. Through numerous collaborations with local and regional public and private entities across St. Louis City, St. Louis County and St. Charles County, Missouri, the Great Rivers Greenway District is effectively capturing the imagination of citizens for uniting the region to achieve common goals.

With a minimum of politics and an abundance of good planning, the Great Rivers Greenway District is creating a new landscape of a region-wide system of interconnected greenways, parks and trails, known as the River Ring. More importantly, the District is laying the groundwork for significant environmental, economic development and social benefits that will have a long lasting impact throughout the region.

Our initiatives are gaining widespread attention. In November 2005, an editorial in the *St. Louis Post Dispatch* said, "In 2000, voters on both sides of the river took the long view and wisely approved a one-tenth-cent sales tax to invest in such restoration. Now, we're starting to reap the benefits."

The Great Rivers Greenway District not only is being recognized as a catalyst for change, we are regarded as a model for public engagement and effective collaborations between public entities, private companies and individuals, local neighborhood groups and organizations, environmental and transportation organizations, school districts and higher education.

For the citizens of the City of St. Louis, St. Louis County and St. Charles County who support the Great Rivers Greenway District, as well as our neighbors in St. Clair and Madison counties in Illinois, the new spirit of regional cooperation is invigorating.

In Summary

The River Ring, which encompasses an area of 1,216 square miles with 1.6 million residents and over 100 municipalities, not only ensures environmental stewardship by protecting and conserving important resources while improving the quality of our air and water, it supports economic development in new and established communities alike. In addition, by promoting good health, local pride, cross-cultural interaction and education, the Great Rivers Greenway's projects provide a framework for strengthening community bonds and our quality of life.

The Great Rivers Greenway once again credits all of those citizens, organizations and agencies that have worked tirelessly to apply ideas and engage resources to ensure the success of our many projects and initiatives.

We also wish to thank the members of our board of directors for their constant guidance and commitment to The Great Rivers Greenway District and its mission. Special gratitude goes to members of the Citizen Advisory and Technical Advisory committees, whose generous participating and input has been so essential to our progress.

As we move forward in implementing the regional plan, we welcome the challenges and excitement of the next stages of development for The River Ring. And we anticipate with pleasure the continued collaboration with all of our partners – citizens, communities and government agencies – throughout the St. Louis Region.

Sincerely,



David Fisher
Executive Director



Mike Murray
President of the Board

Project Highlights for 2005:

With approximately 40 miles of trail already completed across the region, changes are being experienced and excitement is growing about enhancing our reputation as a world-class region. In addition, we have created the impetus for several legacy projects that will have a major and long-lasting impact on the region. These include:

St. Louis Riverfront

In 2005, the Great Rivers Greenway District took the lead in developing the Master Plan for the rebirth of the St. Louis Riverfront with partners including the Danforth Foundation, City of St. Louis, National Park Service Jefferson National Expansion Memorial, Downtown Now!, Metro, Army Corps of Engineers and Downtown St. Louis Partnership. After considering proposals from 12 teams from across the nation, each representing a collaboration of five to six firms, Balmori Associates, Inc. of New York was named the lead designer with St. Louis based HOK Planning Group providing project management.

Because public engagement is a critical component of the project, two public forums were held in June and October, and quantitative research and other outreach initiatives were conducted to gather input from tourists, as well as the business, arts and civic community. At the October forum, four different design concepts were presented and public response overwhelmingly favored the most ambitious concept, featuring islands and terraces that would enhance the riverfront by providing new spaces for events and recreation while allowing visitors to experience the dynamic river.

River des Peres Greenway

In September, a ribbon cutting led by St. Louis Mayor Francis Slay was held to celebrate the grand opening of the River des Peres Greenway. Attended by a large group of local dignitaries, as well as local citizens, the River des Peres Greenway is an exceptional example of what can be accomplished for the region. Not only does its dramatic 250-ft. long by 12-ft. wide bike and pedestrian bridge serve

as a unique focal point for the community, it also provides safe and convenient access for the River des Peres greenway. The pre-fabricated steel bridge, featuring 18-ft. high trusses and a poured concrete surface, not only links bike and pedestrian paths on the north and south sides of the River des Peres, it has become a great way to connect neighborhoods and citizens. In addition to the social benefits of more people using the greenway for walking, jogging, rollerblading, pushing baby strollers and walking their dogs, there are the long-range benefits that result from activities that encourage a healthier, more active lifestyle.

Bike St. Louis

In April 2005, a ribbon cutting was held to celebrate the region's first 20-mile continuous on-street bicycle route, which quadrupled the amount of on-street lanes in the City of St. Louis. Developed by Bike St. Louis, a joint venture of the Great Rivers Greenway District and the City of St. Louis, the route was created in response to an idea initiated by Lewis Reed, 6th Ward Alderman from the city of St. Louis and then Missouri State Representative Russ Carnahan. The new route has helped established bicycling as a direct alternative transportation option between major employment and housing centers, as well as several regional and local commercial and recreation areas.

St. Vincent Greenway

The fundamental belief that greenways foster social, environmental and economic development benefits is coming to life with the St. Vincent Greenway, a seven-mile expanse that will connect NorthPark in Berkeley, the University of Missouri-St. Louis, St. Vincent Park and Forest Park. As a vital St. Louis City and County connection that unifies communities, it will encompass two regional parks, six connecting greenways, seven existing MetroLink stations, a university campus and multiple mixed-use developments.

Dardenne Greenway

Through a public-private partnership established in 2005 with McEagle Properties LLC, Vantage Homes, and WingHaven Residential, LLC, the Greenway District assembled nearly 165 contiguous acres along Dardenne Creek in St. Charles County. This includes 86 acres purchased by the Greenway District that is designated to become the largest park in the community of Dardenne Prairie.

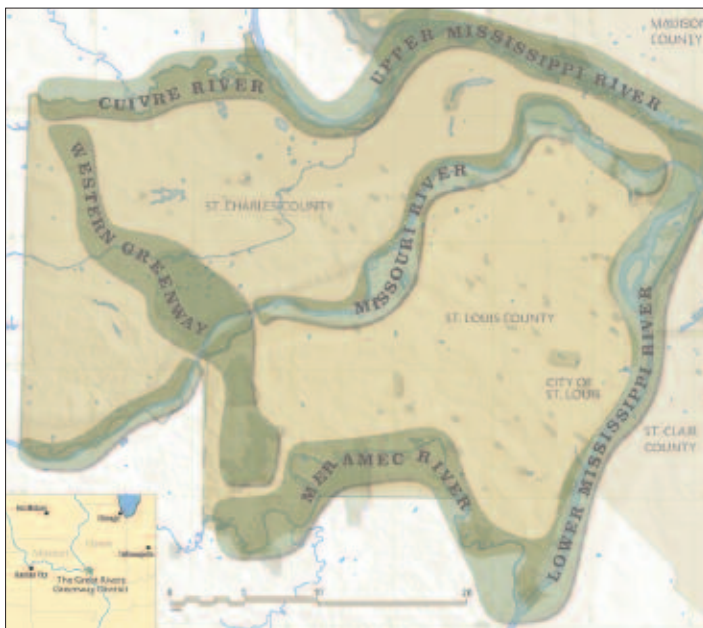
The River Ring

Because it is surrounded by waterways, the St. Louis region has been referred to as an island, nestled by its rivers and streams. This notion inspired the main concept for the development of what will become the regional, interconnected system: The River Ring.

Historically, the region has been defined by its great rivers—the Missouri and Mississippi. Together with the Meramec and Cuyvre rivers, the Mississippi River forms a three-quarter ring around the Great Rivers Greenway planning area. By joining these three rivers with the Missouri River through a series of interconnected greenways, parks and trails, the circle is completed, providing access to The River Ring throughout the St. Louis region.

The River Ring itself consists of two key components:

- 1) Greenways of various scales (major, regional, local and neighborhood)
- 2) Confluences of various sizes



THE RIVER RING

Greenways are linear open spaces that serve a variety of purposes. They are a way to link natural, cultural and community assets to each other.

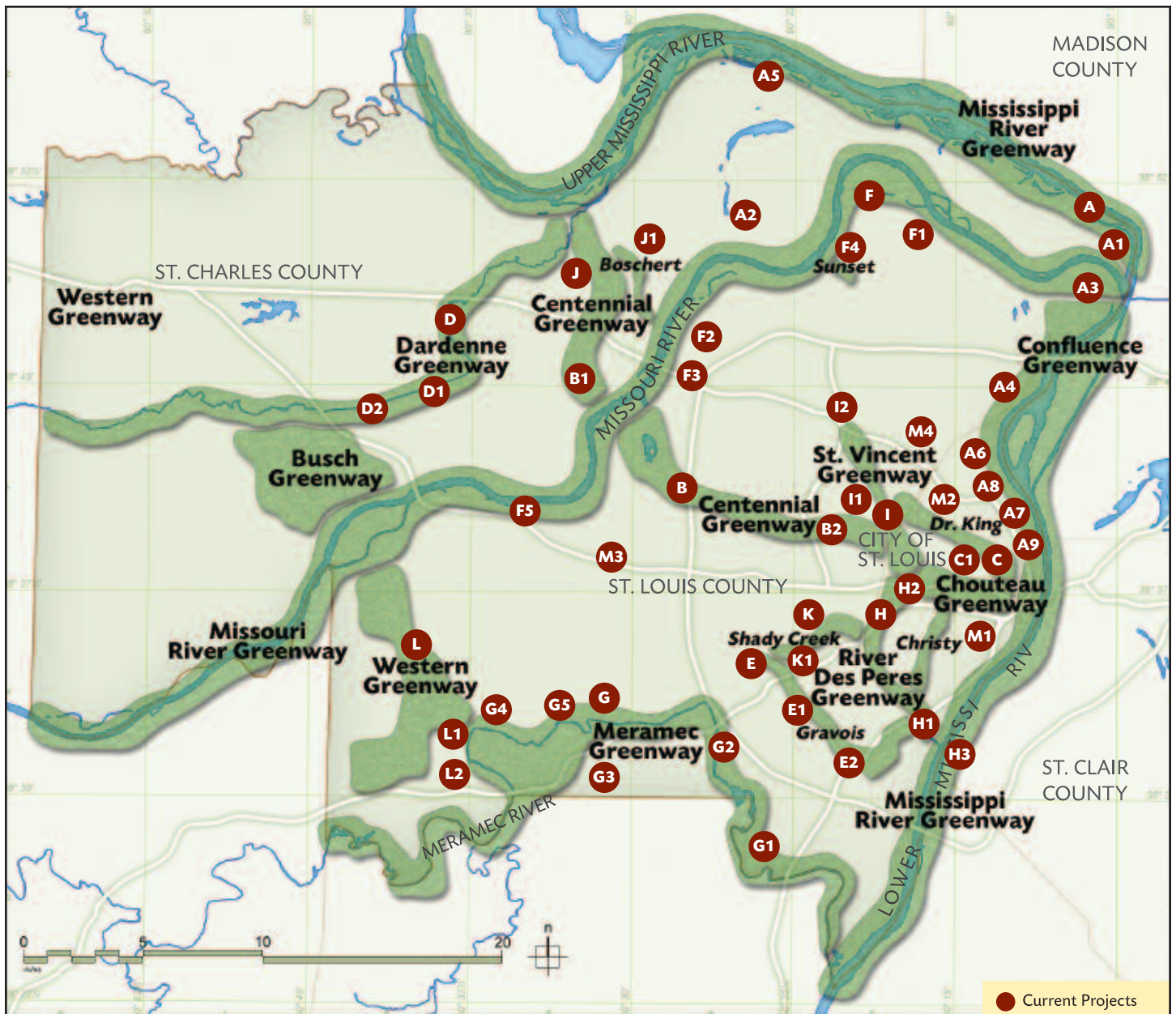
Confluences mark the location where two greenways meet. They provide opportunities for newly developed facilities, including:

- Bicycle and/or pedestrian bridges
- Boat rentals and docks
- Information kiosks
- Interpretative trails with explanatory signage
- Parking hubs
- Picnic facilities, shelters, restrooms, and
- Rental facilities for bicycles

Eventually, a web of more than 45 major, regional, local and neighborhood greenways will crisscross The River Ring. It will link three counties, join two states, and cover an area of 1,216 square miles. The River Ring also is linked to the Metro East Park and Recreation District, giving citizens access to a bi-state, regional system.



THE INTERCONNECTED SYSTEM OF GREENWAYS, PARKS AND TRAILS



● Current Projects

2005 PARTNERSHIP PROJECTS

A	Confluence Greenway	D	Dardenne Greenway	G	Meramec Greenway	J	Boschert Greenway
A1	Ted and Pat Jones Confluence Point State Park	D1	Dardenne Creek Storm Water Management Plan	G1	River Mile 7 – St. Louis County	J1	Boschertown Road to New Town Boulevard Trail
A2	Katy Trail Connector	D2	Dardenne Greenway at BaratHaven	G2	River Mile 18 – City of Fenton	K	Shady Creek and Deer Creek Greenways
A3	Columbia Bottom Conservation Area	E	Gravois Creek Greenway	G3	River Mile 25 – St. Louis County	K1	Planning and Design
A4	Old Chain of Rocks Bridge	E1	Grant's Trail	G4	River Mile 28 – St. Louis County	L	Western Greenway
A5	Portage des Sioux Nature Area	E2	Clydesdale Park	G5	River Mile 30 – St. Louis County	L1	Hamilton-Carr Trail Phase 1
A6	Mary Meachum Freedom Crossing	F	Missouri River Greenway	H	River des Peres Greenway	L2	River Mile 31 – City of Wildwood
A7	McKinley Bridge and Branch Street Railroad Trestle	F1	Missouri River Greenway: Phase 1 Planning	H1	River des Peres Pilot Project—Christy Greenway Connection	M	Collaborative Planning
A8	Riverfront Trail	F2	SEED Project – Riverwoods Conservation Area and River Access	H2	Lindell Pavilion in Forest Park	M1	Bike St. Louis: Phase 1
A9	St. Louis Riverfront Master Plan	F3	SEED Project – Truman Park Trail Connector	I	St. Vincent Greenway	M2	St. Louis Citywide Parks Plan
B	Centennial Greenway	F4	SEED Project-Old Town Florissant Trail	I1	Planning and Design	M3	Regional Bicycle Facilities Plan
B1	Centennial St. Charles	F5	Chesterfield Levee Trail Pilot Project	I2	University of Missouri – St. Louis and St. Vincent Park Trail	M4	Bike St. Louis: Phase 2
B2	Olive Blvd & 170						
C	Chouteau Greenway						
C1	Phase III Planning Study						

2005 Partnership Projects

The Current Projects

A. Confluence Greenway

Planning for the greenway started in 1997 by a variety of public, private and nonprofit organizations. The Confluence Greenway links the confluence of the Mississippi and Missouri rivers to the Riverfront in downtown St. Louis. The planning area for the greenway includes St. Charles County, St. Louis County and the City of St. Louis, Missouri, as well as Madison and St. Clair counties, Illinois. The district conceptually endorsed the Confluence Greenway plan and currently is working on implementing a number of projects.



Ted and Pat Jones Confluence Point State Park

funds for a public access road to the new state park. The park opened in summer 2004.

A2 Katy Trail Connector

Partner(s): Missouri Department of Natural Resources, Division of State Parks

Description: Great Rivers Greenway is working to extend the Katy Trail from its current end in the City of St. Charles to the Machens area in eastern St. Charles County. The district provided funding to construct a by-pass of a scour hole along the Missouri River, which hindered construction of the trail.

A3 Columbia Bottom Conservation Area

Partner(s): Missouri Department of Conservation

Description: Funding for a five-mile hiking and biking trail in the Columbia Bottom Conservation Area completed in spring 2003. Great Rivers Greenway also acquired 280 acres adjacent to the Columbia Bottom Conservation Area for future expansion.



Confluence Trail – Columbia Bottom Conservation Area

A1 Ted and Pat Jones Confluence Point State Park

Partner(s): Missouri Department of Natural Resources, Division of State Parks

Description: Acquisition of 515 acres, increasing the Missouri State Park's acreage to 1,118 acres – located in eastern St. Charles County.

In 2003, the district provided



Old Chain of Rocks Bridge

A4 Old Chain of Rocks Bridge

Partner(s): Trailnet, Inc.; and City of Madison, Illinois

Description: Great Rivers Greenway provided funding to Trailnet, Inc. for year-round public access to the Old Chain of Rocks Bridge, an important bicycle and pedestrian linkage between Missouri and Illinois. The district also funded structural repairs to the bridge, which were completed in 2005.

A5 Portage des Sioux Nature Area

Partner(s): City of Portage des Sioux

Description: Great Rivers Greenway is working with the City of Portage des Sioux to construct a 40-acre nature area in eastern St. Charles County. The nature area will allow for passive recreational activities and feature restored wildlife habitats. The nature area opened in 2004.

A6 Mary Meachum Freedom Crossing

Partner(s): Grace Hill Neighborhood Services; National Park Service; Whitaker Foundation; and Missouri Department of Natural Resources, State Historic Preservation Office

Description: Great Rivers Greenway supplemented federal and private funding for the planning, design and site development of the first nationally designated Underground Railroad site in Missouri. The site is located on the Mississippi River in the City of St. Louis. The site design is targeted to be complete in 2006.

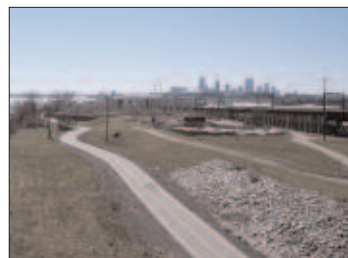
A7 McKinley Bridge and Branch Street Railroad Trestle

Partner(s): Illinois Department of Transportation; Missouri Department of Transportation; Metro East Park and Recreation District

Description: Funding to create bicycle and pedestrian access across the McKinley Bridge to connect existing and proposed bicycle and greenway projects in Missouri and Illinois. Project is under construction and is targeted to be complete in 2007.



McKinley Bridge and Branch Street Railroad Trestle



Riverfront Trail

A8 Riverfront Trail

Partner(s): City of St. Louis; Confluence Greenway

Description: Funding for planning and design to extend the trail to the Gateway Arch and to provide signage along the entire 11-mile trail. Reconstruction of the trail is targeted to be complete in 2006.



Downtown Riverfront

A9 St. Louis Riverfront Master Plan

Partner(s): City of St. Louis; National Park Service; Danforth Foundation; Metro; Downtown St. Louis Partnership; U.S. Corps of Engineers; and the U.S. Coast Guard

Description: Funding for a comprehensive plan for the St. Louis downtown riverfront was started in 2005. The plan will identify a series of development projects along the central riverfront, between the Eads and Poplar Street bridges.

B. Centennial Greenway

This greenway runs from Forest Park to Creve Coeur County Park and across the Veterans Memorial Bridge to St. Charles County. The greenway continues to its confluence with Dardenne Greenway.

B1 Centennial St. Charles

Partner(s): St. Charles County; Cities of St. Charles and St. Peters

Description: Great Rivers Greenway provided funds to plan and design a bicycle and pedestrian trail from the Katy Trail to existing bicycle facilities within the City of St. Peters. The new trail will link the bicycle facility on the Veterans Memorial Bridge and provide connections to Creve Coeur County Park in St. Louis County.



Creve Coeur County Park



Olive Blvd and I-170

B2 Olive Blvd and I-170

Partner(s): Cities of Olivette, University City and Missouri Department of Transportation
Description: Great Rivers Greenway provided funds to construct a bicycle/pedestrian trail along Olive Blvd in conjunction with the redevelopment of the Olive Blvd and I-170 interchange. The improvements will extend from McKnight Road to Price Road.

C. Chouteau Greenway

This greenway is to restore a link between downtown St. Louis Riverfront and Forest Park. An extension of the greenway will travel south to connect into Tower Grove Park.

C1 Phase III Planning Study

Partner(s): U.S. Army Corps of Engineers; McCormack Baron; and Downtown Now!

Description: Great Rivers Greenway provided funds for planning and predevelopment costs of Chouteau Greenway in the City of St. Louis.



Chouteau Greenway

D. Dardenne Greenway

Beginning at the Mississippi River, this greenway follows Dardenne Creek to the Busch Memorial Conservation Area. There, it continues west and joins the Cuivre Greenway in western St. Charles County.

D1 Dardenne Creek Storm Water Study

Partner(s): U.S. Army Corps of Engineers; St. Charles County; and cities of Cottleville, Dardenne Prairie, O'Fallon, St. Charles, and St. Peters

Description: Great Rivers Greenway provided funds for the Dardenne Creek storm water management plan in St. Charles County.



Dardenne Creek



Dardenne Greenway at BaratHaven

D2 Dardenne Greenway at BaratHaven

Partner(s): McEagle Development L.C.; Vantage Homes; WingHaven Residential, LLC; Cities of O'Fallon and Dardenne Prairie

Description: Great Rivers Greenway is developing a park and greenway along Dardenne Creek in St. Charles County. The project will provide public trail connections to residential, commercial and institutional areas within the proposed BaratHaven development and its surroundings. The project includes the construction of trails, recreational fields, boat docks and other public amenities. The district has committed funds for planning and design of the park and greenway. Construction is targeted to start in 2006.

E. Gravois Greenway

Grant's Trail, a six-mile trail system forms the basis for this greenway. The greenway follows Gravois Creek from River des Peres through portions of south St. Louis County.



Grant's Trail

E1 Grant's Trail

Partner(s): St. Louis County Parks Department; Trailnet, Inc.
Description: Planning is underway to extend Grant's Trail to the River des Peres Greenway. An additional 2-mile trail extension to the cities of Kirkwood, Crestwood and Oakland is targeted to be complete in 2006.

E2 Clydesdale Park

Partner(s): St. Louis County Parks Department
Description: Great Rivers Greenway provided funding for a comprehensive trail system within Clydesdale Park with a connection to Grant's Trail. The connection will make possible direct access to Grant's Trail from surrounding residential neighborhoods. The project is under construction and is targeted to be complete in 2006.

F. Missouri River Greenway

This greenway is a major component of The River Ring. It follows the Missouri River in St. Louis and St. Charles counties. Existing features are the Katy Trail and the bicycle facilities on the Veterans Memorial Bridge.

F1 Missouri River Greenway: Phase I Planning

Partner(s): Missouri Department of Conservation; various municipalities; St. Louis County; other public and private entities

Description: The Missouri River Greenway (Phase I) will parallel the Missouri River from the confluence with the Mississippi River at the Columbia Bottom Conservation Area

to the Veterans Memorial Bridge in Maryland Heights. Several SEED projects have been selected for preliminary design in 2004, pending approval by the public sector land owners involved in each project. Construction of the projects will begin after approvals are received and the design is completed.



Creve Coeur County Park

F2 SEED Project—Riverwoods Conservation Area and River Access

Partner(s): Missouri Department of Conservation; City of Bridgeton
Description: Development of approximately 2-miles of trail through the Riverwoods Conservation Area, extending between the western terminus of St. Charles Rock Road and I-70.



Missouri River Greenway

F3 SEED Project—Truman Park Trail Connector

Partner(s): City of Hazelwood; and Missouri Department of Conservation
Description: Great Rivers Greenway worked with the City of Hazelwood to complete a mostly shaded 1-mile trail through Truman Park in 2005. A future phase will connect the existing trail to St. Stanislaus Conservation Area and the Missouri River.



Truman Park



New trail south of Sunset Park

F4 SEED Project—Old Town Florissant Trail

Partner(s): City of Florissant
Description: A 2.5-mile trail connecting two Florissant parks, Sunset Park and St. Ferdinand Park is targeted to be complete in 2006. A future phase of trail will be extended to Old Town Florissant and more than a mile of trail parallel to the Missouri River in Sunset Park will be constructed.

F5 Chesterfield Levee Trail Pilot Project

Partner(s): City of Chesterfield, Monarch Chesterfield Levee District
Description: The Monarch Chesterfield Levee Trail will become a 17-mile loop, running primarily along the Monarch Chesterfield Levee. Planning and engineering of the first 3.5 mile segment is targeted to begin in 2006.

G. Meramec Greenway

Great Rivers Greenway is working in partnership with St. Louis County; Missouri Department of Natural Resources, Division of State Parks; the Meramec River Recreation Association; and various municipalities to create and extend trails along the Meramec River. To date, the district has acquired more than 150 acres along the greenway.

G1 River Mile 7 – St. Louis County

Partner(s): St. Louis County Parks Department
Description: Great Rivers Greenway provided funding to develop a 1.5-mile trail link and a trailhead in Lower Meramec Park. The project is targeted to be complete in 2006.



Meramec Greenway

G2 River Mile 18 – City of Fenton

Partner(s): City of Fenton
Description: Great Rivers Greenway provided funding to develop a one-mile trail linking existing trails at Fenton City Park to St. Louis County's Unger Park. The project was completed in 2005.

G3 River Mile 25 – St. Louis County

Partner(s): St. Louis County Parks Department
Description: Great Rivers Greenway provided funds for trail construction along the Chubb Trail in Lone Elk County Park. The project is targeted for completion in 2007.

G4 River Mile 28 – St. Louis County

Partner(s): St. Louis County Parks Department
Description: Great Rivers Greenway provided funding to extend the Meramec Greenway Trail one-mile and to construct a trailhead at Sherman Beach County Park. This project was completed in 2004.



Meramec Greenway Trail

G5 River Mile 30 – St. Louis County

Partner(s): St. Louis County Parks Department
Description: Great Rivers Greenway provided funding to construct a feeder trail from the Meramec Greenway trail to Packwood Park. The project is targeted for completion in 2007.

H. River des Peres Greenway

This greenway extends from Forest Park along the River des Peres to its confluence with the Mississippi River. In 1998, representatives from the City of St. Louis; St. Louis County; Metropolitan St. Louis Sewer District; U.S. Army Corps of Engineers; and East-West Gateway Council of Governments developed a plan for a linear park along the River des Peres from the Mississippi River to Forest Park. The district conceptually endorsed the plan and selected a pilot project for River des Peres Greenway.



Forest Park

H1 River des Peres Pilot Project – Christy Greenway Connection

Partner(s): City of St. Louis
Description: Great Rivers Greenway provided funding to plan, design and construct approximately 4 miles of greenway and trails within the Christy Greenway. The greenway will connect the River des Peres Greenway to existing bicycle paths in south St. Louis City. The project was completed in 2005.

H2 Lindell Pavilion in Forest Park

Partner(s): Forest Park Forever
Description: Great Rivers Greenway provided funding to refurbish the Lindell Pavilion Visitor and Education Center in Forest Park. The Center, renamed the Dennis and Judith Jones Visitor Center, opened in fall 2003 and serves as a major trailhead for recreational users and park visitors.



Lindell Pavilion in Forest Park

I. St. Vincent Greenway

This greenway joins the Centennial and River des Peres greenways in Forest Park. It then continues north to the confluence of the Maline and Coldwater greenways in north St. Louis County.

I1 Planning and Design

Partner(s): St. Louis County Economic Council; various municipalities
Description: A concept plan for a 7-mile greenway from Forest Park to the City of Berkeley's Ramona Lake Park was completed in 2005. Key features of the plan include a primary trail route, a sustainable development focus area and a new park in the City of Wellston.



Low-impact trail in St. Vincent County Park

I2 University of Missouri—St. Louis and St. Vincent Park Trail

Partner(s): University of Missouri—St. Louis and St. Louis County
Description: Engineering of an estimated 2.5-mile trail through the University of Missouri—St. Louis campus, both north and south of Natural Bridge Road, and through St. Vincent Park was initiated. This project includes both the primary trail route for St. Vincent Greenway and a connector to the North County Bikeway, which consists of the 2.2-mile off-road Ted Jones Trail from the University campus to downtown Ferguson and an on-street route an additional 10.4 miles northward.

J. Boschert Greenway

Boschert Greenway begins in the City of St. Charles, where it connects to the Missouri River Greenway and the Katy Trail. It then continues west along Boschert Creek to link to Centennial and Dardenne greenways.

J1 Boschertown Road to New Town Boulevard Trail

Partner(s): City of St. Charles
Description: Great Rivers Greenway is funding the planning and design of a 1.5-mile trail along Boschert Creek in the City of St. Charles. The trail will connect to Fox Hill Park with long-range plans to include a connection to the Katy Trail.

K. Shady Creek and Deer Creek Greenway



Dedication of GRG-funded Magner Woods addition in Webster Groves

Shady and Deer Creek Greenways will follow Shady and Deer creeks between Larson Park in the City of Webster Groves and Deer Creek Center in the City of Maplewood for about four miles. The greenway will link the cities of Brentwood, Maplewood, and Webster Groves. A connection to the new Sunnen MetroLink station will be established as well.

The greenways will link residents of the other communities with Brentwood's system of trails connecting all of its parks. The greenways will also serve as a connector to a planned larger system of trails and open space following Deer Creek and ultimately lead to River des Peres and the Mississippi River. To the west, Shady Creek Greenway will link to the Gravois Greenway and Grant's Trail.

K1 Planning and Design

Partner(s): Cities of Webster Groves, Maplewood and Brentwood
Description: A concept plan for a greenway following Shady Creek in Webster Groves and continuing eastward along Deer Creek to Big Bend Boulevard is under development. The plan will identify potential trail routes and expansions of nature areas. Development of a SEED project trail from Lorraine Davis Park to Deer Creek Park is anticipated.

L. Western Greenway

The Western Greenway will link the Meramec and Missouri rivers in western St. Louis County, as well as various existing and planned parks and conservation areas. Partners on this project include the cities of Chesterfield, Eureka and Wildwood; St. Louis County Parks Department; Open Space Council of Greater St. Louis; Meramec River Recreation Association; Rockwood School District; Missouri Department of Conservation; and Missouri Department of Natural Resources.

L1 Hamilton-Carr Trail Phase I

Partner(s): City of Wildwood
Description: Great Rivers Greenway is providing funds for the development of a trailhead and one-mile trail along Highway 109. The trail connects to the Al Foster Trail along the Meramec River. This project was completed in 2005.

L2 River Mile 31 – City of Wildwood

Partner(s): City of Wildwood
Description: Great River's Greenway provided funding to develop a trailhead and feeder trail to Meramec Greenway. The project is targeted to be complete in 2007.

M. Collaborative Planning

M1 Bike St. Louis: Phase I

Partner(s): City of St. Louis; Bike St. Louis Partnership
Description: Supporting the development of on-street bicycle routes linking various business, cultural and recreational districts in the City of St. Louis and initiating local connections to the regional greenway network. The first 20-miles of on-street routes were completed in 2005.



Bike St. Louis

M2 St. Louis Citywide Parks Plan

Partner(s): East-West Gateway Council of Governments
Description: Use and facilities plan for the City's parks including concepts for linking parks together through greenways, trails and pedestrian routes. The project was completed in 2005.

M3 Regional Bicycle Facilities Plan

Partner(s): East-West Gateway Coordinating Council
Description: Supporting the development of a regional bicycle plan that will identify routes for bicycle transportation that can tie into a regional greenway system.

M4 Bike St. Louis: Phase II

Partner(s): Cities of St. Louis, Clayton and Maplewood and Bike St. Louis Partnership
Description: The first 20 miles of on-street bicycle routes are complete. An additional 50 miles of routes in the City of St. Louis and St. Louis County are targeted to be identified in 2006.



St. Louis Zoo

2005 Financial Report

**Metropolitan Park and Recreation District
d/b/a The Great Rivers Greenway District
Balance Sheet
December 31, 2005**

Assets	
Cash and investments	\$ 11,372,286
Sales taxes receivable	889,966
Interest receivable	75,455
Other receivables	102,635
Prepaid expenses	6,817
Total current assets	<u>12,447,159</u>
Land and land improvements	26,199,787
Construction in process	2,688,564
Furniture and fixtures	126,265
Accumulated depreciation	(107,439)
Total property and equipment, net	<u>28,907,177</u>
Total assets	<u>\$ 41,354,336</u>
Liabilities and Net Assets	
Liabilities	
Accounts payable	\$ 1,921,132
Accrued wages and other liabilities	145,342
Note payable	4,840,538
Total liabilities	<u>6,907,012</u>
Net Assets	
Invested in capital assets	24,066,639
Unrestricted net assets	10,380,685
Total net assets	<u>34,447,324</u>
Total liabilities and net assets	<u>\$ 41,354,336</u>

**Metropolitan Park & Recreation District
d/b/a The Great Rivers Greenway District
Schedule of Revenues
For the Year Ending December 31, 2005**

Category Description

Sales tax revenues	\$ 10,555,815
Investment income	407,415
Government Grants	780,652
Rental Income	484,065
Miscellaneous Income	<u>50,435</u>
Total Revenues	<u>\$ 12,278,382</u>

**Metropolitan Park & Recreation District
d/b/a The Great Rivers Greenway District
Schedule of Operating Expenses
For the Year Ending December 31, 2005**

Category Description

Salary and Fringe Benefits	\$ 253,060
Contractual and professional services	187,159
Office and support	134,335
Depreciation expense	84,555
Space and occupancy	80,536
Capital Expenditures	<u>62,282</u>
Total Operating Expenditures	<u>\$ 801,927</u>

**Metropolitan Park and Recreation District
d/b/a The Great Rivers Greenway District
Schedule of Project Expenditures
For the Year Ended December 31, 2005**

Greenway	Project	
	River Ring	
Confluence Greenway	Branch Street Trestle	\$ 1,872,635
	McKinley Bridge Bikeway	1,210,960
	Downtown Riverfront Planning	499,899
	Americorp Trail Ranger Program	154,236
	Riverfront Trail	110,355
	Old Chain of Rocks Bridge-Public Access/Restrooms	105,973
	Ecosystem Study	52,028
	Old Chain of Rocks Bridge - Structural Repairs	19,173
	Mary Meachum Freedom Crossing	7,458
		<u>4,032,717</u>
Missouri River Greenway	Truman Park Trail Connector	280,652
	Bridgeton Riverfront Access and Trailhead	223,203
	Chesterfield Levee Trail SEED Project	210,649
	Planning and Design	100,600
	Maryland Heights SEED Project	5,609
		<u>820,713</u>
Meramec Greenway	River Mile 20 - City of Kirkwood	210,195
	River Mile 18 - City of Fenton	103,600
	Western Phase I	65,533
	Planning and Design	177,672
		<u>425,512</u>
Mississippi River Greenway	Canary Island Riverside Greenway	<u>4,391</u>
	Regional Greenways	
Dardenne Greenway	Dardenne Greenway at Barathaven	4,504,462
	Dardenne Creek Storm Water Study	101,574
	Planning and Design	3,372
		<u>4,609,408</u>
River des Peres Greenway	River des Peres Pilot Project - Christy	<u>4,088,019</u>
Centennial Greenway	Planning Study and SEED Projects	448,561
	St. Charles	15,219
	170-Olive Interchange Engineering	3,035
		<u>466,815</u>
St. Vincent Greenway	UMSL Thru St. Vincent Park	<u>176,346</u>
	Local Greenways	
Gravois Creek Greenway	Grant's Trail - Phase III	1,744,364
	Clydesdale Park Connector	591,465
	Grant's Trail - Phase IV	91,077
		<u>2,426,906</u>

**Metropolitan Park and Recreation District
d/b/a The Great Rivers Greenway District
Schedule of Project Expenditures
For the Year Ended December 31, 2005**

Local Greenways, cont.		
Sunset Greenway	Sunset Greenway/Sunset Park Trail Extension	1,067,147
Chouteau Greenway	EDI Grant	594,927
	Debt Service - Interest	301,107
	Planning and Design	6,457
		902,491
Shady Creek Greenway	Planning Study and SEED Project	237,652
Dr. King Greenway	Phase I Planning Study	8,749
Busch Greenway	Missouri Research Park Trail Connector	2,123
Boschert Greenway	Boschertown Road to New Town Boulevard Trail	359
Collaboratives, Initiatives and Other		
Collaborative Planning	Bicycle Programming	166,129
	Bike St. Louis - Phase I and II	106,568
	Land Acquisition Costs - General	81,300
	Clean Water and Outreach Education	70,770
	Website	69,072
	Programming and Events	54,628
	Great Rivers Greenway Signage	28,228
	Regional Bicycle Facilities Plan	13,050
		589,745
	Total Project Expenditures	\$ 19,859,093