



2025

BRICKLINE GREENWAY ENGAGEMENT & OUTREACH SUMMARY

For engagement activities Jan. 1 - Dec. 31, 2025

Prepared by:



Table of Contents

Overview	2
2025 Community Engagement Counts.....	3
Fundraising Campaign Engagement.....	4
Technology Action Plan Engagement	4
Greenway Engagement by Segment.....	5
The North Connector	5
Gateway Mall	8
Mill Creek Valley	10
Foundry Crossing	11
Forest Park Connector.....	12
Spring to Market Feasibility Study	12
Less Active Greenway Segments	13
Conclusion	14
Appendices	15
APPENDIX A - Working Group and Community Advisory Committee Rosters	15
APPENDIX B – North Connector Communications	17
APPENDIX C – Gateway Mall Communications.....	22
APPENDIX D – Gateway Mall Stakeholder Meetings.....	24
APPENDIX E – Foundry Crossing Communications	27

Overview

Great Rivers Greenway

Great Rivers Greenway (GRG) is St. Louis' regional agency dedicated to planning, designing, and creating greenways. These dynamic outdoor spaces are intended to connect people, neighborhoods, and key destinations throughout the region. Through collaboration with municipalities, public agencies, businesses, nonprofit organizations, and residents, GRG works to develop local and regional pathways that enhance accessibility, mobility, and the overall character of surrounding communities.

Each greenway is shaped by the unique context of the areas it travels through and includes a wide range of features tailored to community needs. These features may consist of paved trails, conservation elements such as rain gardens and restored prairies, and amenities like benches, bike racks, and drinking fountains. Together, these elements support both everyday use and long-term environmental sustainability while strengthening connections between businesses, parks, schools, neighborhoods, waterways, and public transit.

To date, more than 135 miles of greenways have been built across the St. Louis region. Through this growing network, Great Rivers Greenway continues to advance the community's vision for equitable growth, environmental stewardship, and improved regional connectivity through projects such as the Brickline Greenway.

Brickline Greenway

The Brickline Greenway originated in the late 1990s with the Chouteau Lake Plan and was later further developed through Great Rivers Greenway's Chouteau Lake and Greenway Master Plan. Envisioned as a major public-private partnership, the Brickline Greenway is intended to connect Forest Park to downtown St. Louis and Gateway Arch National Park, with northern spurs extending to Fairground Park and southern connections reaching Tower Grove Park. When complete, the project will include more than 10 miles of urban trails.

This transformative project is intended to enhance citywide connectivity by linking parks, cultural institutions, business districts, transit hubs, and residential areas. In doing so, the Brickline Greenway supports economic growth, improves quality of life, and creates new opportunities to celebrate St. Louis' cultural heritage through public art installations integrated throughout the corridor. The Brickline Greenway is being developed in phases through a combination of public and private funding and by extensive community input. The project represents a significant collaborative effort led by Great Rivers Greenway working alongside multiple consultant teams, to create an inclusive, accessible, and environmentally sustainable urban greenway for the St. Louis region.

2025 Community Engagement Counts

In 2025, the Brickline project team attended 544 meetings and events as shown in the following chart.

2025 Brickline Engagement and Meeting Counts

Meeting Type	Jan.	Feb.	Mar.	Apr.	May	Jun.	Jul.	Aug.	Sept.	Oct.	Nov.	Dec.	Total
Advisory (Working Groups and Other Committees)	2	0	2	2	3	1	1	1	1	0	0	0	13
Agency/Project Coordination	1	2	4	2	1	5	1	2	1	2	1	1	22
Elected Officials	0	1	8	0	0	0	0	2	0	0	2	0	13
Events	4	4	6	2	3	5	2	6	5	2	4	2	43
Equity/Economic Development	23	25	27	22	13	11	10	22	14	24	22	11	191
Fundraising (Financial Institutions, Funders, Philanthropic)	11	3	7	6	11	15	14	9	10	9	9	9	104
Media	0	0	0	0	0	1	0	3	8	1	0	0	13
National Coordination (AIRR, Highline)	0	0	0	0	0	0	0	0	0	0	0	0	0
Stakeholders (Businesses, Residents, Organizations)	13	8	15	7	2	3	7	9	14	4	16	2	98
Total	54	43	69	41	33	41	35	54	53	42	54	25	544
Quarterly Counts	166			115			142			121			
Monthly Average	45												
Headcount (known)	4128												

The remainder of this report summarizes the engagement and outreach conducted in 2025 for the Brickline Greenway.

Fundraising Campaign Engagement

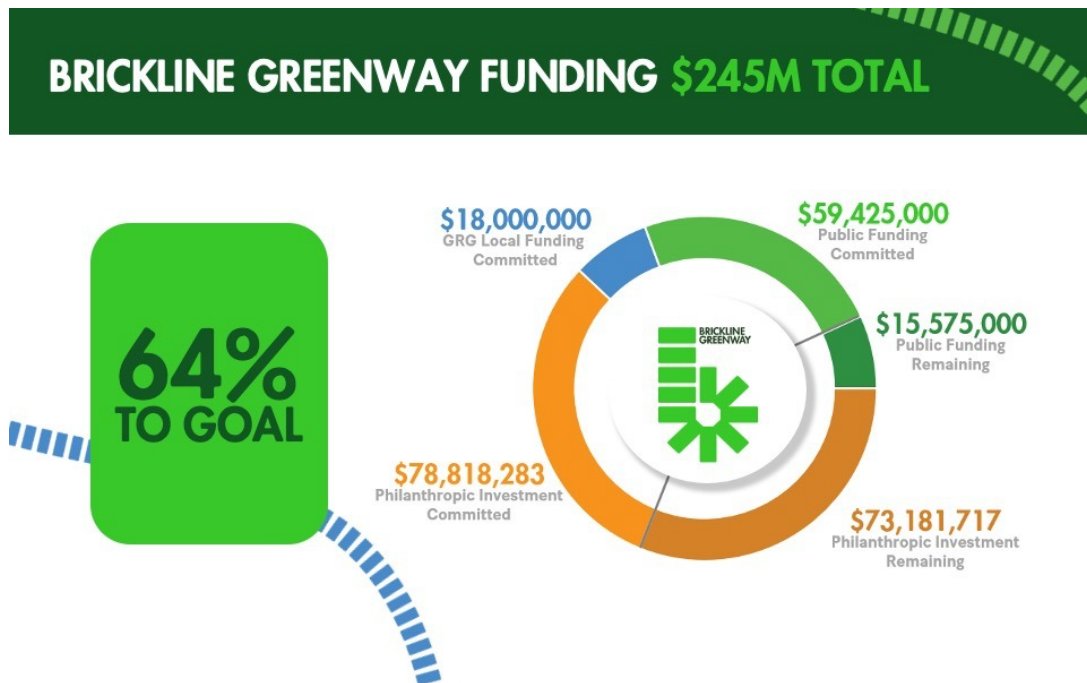
The Brickline Greenway Campaign continues to gain strong momentum, earning broad support from the St. Louis community and regional leaders. 2025 marked a pivotal period for the campaign, reinforcing the strength of public-private partnership as work continues toward the ambitious \$245 million fundraising goal.

One of the year's key milestones was the formation of an expanded campaign committee. This group brings together committed community champions who are serving as influential ambassadors for the Brickline Greenway. Through their leadership, committee members are helping to drive awareness, engage stakeholders, and inspire investment in this transformative regional project.

As of December 2025, the campaign has reached 64% of its overall goal, including:

- **\$18 million** committed by Great Rivers Greenway
- **\$59.43 million** secured in public funding
- **\$78.82 million** raised through private contributions

That leaves \$88.75 million to fully fund this vision. The graphic below highlights the campaign's progress to date and illustrates the opportunity ahead to complete this investment in St. Louis' future.



Technology Action Plan Engagement

As part of Phase one, elements of the Technology Action Plan were implemented along the now completed Market St. segment, which includes public art and technology installations that include an interactive kiosk that was installed in December of 2025.

No additional public engagement occurred for the Technology Action Plan during this reporting period. Following the completion of earlier engagement activities, the project transitioned into Phase Two which is focused on internal, technical development and coordination.

Greenway Engagement by Segment

While engagement occurred across the Brickline Greenway corridor, civic engagement efforts during this reporting period were concentrated in key segments advancing through planning, design and construction. These segments included the North Connector, where phase one entered construction in May 2025, as well as the Gateway Mall, the Midtown I-64/40 Crossing, the Forest Park Connector, and the Spring Street to Market Street Feasibility Study.

For segments already under construction, such as Market St. from 20th St. to Compton Ave., which began construction in 2024, engagement activities were more limited in scope. In these areas, efforts focused on keeping nearby residents and stakeholders informed about construction progress while maintaining enthusiasm for the forthcoming greenway.

The following section provides a summary of engagement activities conducted for each segment of the Brickline Greenway.

Universal Design Group

While engagement activities varied by segment, the Universal Design Group (UDG) played a consistent and influential role across the Brickline Greenway corridor. Formed in 2020 and active through 2025, the UDG helped ensure that the Brickline Greenway designs prioritize universal accessibility, supporting a greenway that can be fully experienced and enjoyed by everyone.

Through quarterly meetings, the UDG provided guidance on key design considerations, including paver details, signage contrast, and the use of tactile models. Grounded in the mission, principles, and intended outcomes of the Framework Plan, the group informed design metrics, strategies, and recommendations that were applied across segments to advance inclusivity and accessibility.

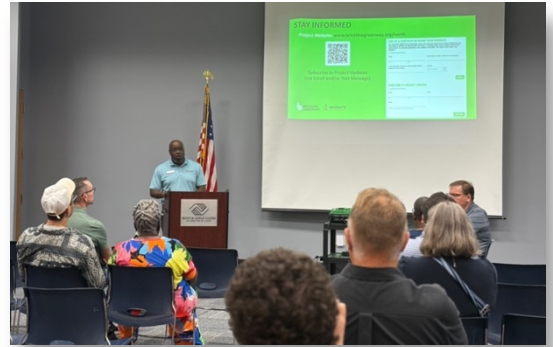
With much of this foundational work completed, the UDG's involvement in 2025 focused on quarterly email updates and a convening to review design plans. The Universal Design Group played a critical role in shaping a greenway that is welcoming, intuitive, and accessible to all users.

A complete roster of the Universal Design Group can be found in Appendix A.

The North Connector

The North Connector extends from Fairground Park south to the Grand MetroLink Station and east to the National Geospatial-Intelligence Agency (NGA). This segment is being implemented in several phases, with the first two phases underway. Phase one begins at Fairground Park at Natural Bridge Ave. on North Grand, continues south to Cass Ave., travels west along Cass Avenue to Spring Street and then extends south on Spring Street to Page Avenue. Phase two will continue the greenway south along Spring Avenue toward Saint Louis University's campus. Construction for phase one of the North Connector broke ground in Spring 2025.

Engagement for phase two supported the project's advancement to 100% design through outreach to students and the greater community, as well as one-on-one engagement with property owners and stakeholders. Beginning in August 2025, the project team also initiated monthly meetings for the North Connector. These meetings were held on the third Tuesday of each month at the Herbert Hoover Boys and Girls Club, located at 2901 N. Grand Blvd.



Brickline Greenway Groundbreaking Celebration

Great Rivers Greenway celebrated the groundbreaking of the North Connector with the community on Monday, March 24, 2025, at the Veterans Community Project, located at 1515 N. Grand Blvd. The event was held from 8:00 to 9:30 a.m. and brought together community members, GRG representatives, and the design team.

Attendees had the opportunity to mingle with project partners while enjoying complimentary refreshments and GRG swag. Remarks were delivered by several project stakeholders, including then St. Louis Mayor Tishaura Jones and Alderwoman Laura Keys. Construction on the North Connector officially began in May 2025.

A copy of the groundbreaking celebration flyer can be found in Appendix B.



B

The Brickline Greenway North Connector Community Advisory Committee (CAC) is an extension of the now inactive Fairground Park Working Group, whose focus was conceptual design, the current committee focused on the refinement of preliminary design plans, public art, and issues specifically related to the neighborhoods adjacent to the North Connector. The CAC provided guidance to SmithGroup, the design team for the North Connector. With this leg of the project entering construction, the CAC met a total of two times in 2025, once virtually and once in-person.

Dates	Meeting Topics
February 20, 2025	Update emailed
August 22, 2025	Wrap-up event at Fairground Park

A complete roster of the Brickline North Community Advisory Committee can be found in Appendix A.



Brickline Greenway Spring Street Open House

On Thursday, April 17, 2025, an open house was hosted at the Contemporary Art Museum St. Louis (CAM), 3750 Washington Ave. from 5 to 7 p.m., with a formal presentation beginning at 6 p.m. Attendees were invited to share feedback on the Spring Street route of the project in advance of finalizing 100% design. Street parking and bike racks were available for attendees. 35 people attended this open house.

In conjunction with the open house, the project team extended the North Connector phase two Community Survey to continue collecting feedback on proposed cross-sections within the Spring Street segment of phase two. The survey closed on March 28, 2025, and 63 responses were received.



A copy of the open house flyer can be found in Appendix B.

Easement Open House

Like phase one, phase two of the North Connector alignment is directly adjacent to several private properties. As a result, the project team organized an open house specifically for property owners from whom a temporary easement may be needed. Invitation letters were mailed to affected stakeholders, along with an informational sheet explaining the temporary easements.

The open house was originally scheduled for Tuesday, June 10, 2025, from 4:30 to 7:00 p.m. at the Heartland Black Chamber of Commerce, located at 1000 N. Vandeventer. The meeting was later postponed to Tuesday, June 24, 2025, and held at the same time and location. At the time of the meeting, the greenway was under construction, with the eastside of Grand Blvd. partially complete. Construction of the Spring St. side is anticipated to begin in 2026.

A copy of the Open House Easement Letter and FAQ can be found in Appendix B.

Gateway Mall

From 20th Street to Gateway Arch National Park at 4th Street, the Gateway Mall segment represents the third phase of the greenway along Market Street, continuing east from Harris-Stowe State University at Compton Avenue to 20th Street. Engagement for this segment focused on business owners, community stakeholders, and area residents to help inform the early stages of planning and design.

Brickline Greenway Gateway Mall Community Advisory Committee

The Brickline Greenway Gateway Mall Community Advisory Committee (CAC) was established in the fall of 2024, with much of the work taking place in 2025. The CAC provided guidance to SmithGroup on Gateway Mall design plans. The committee met a total of four times, including one virtual meeting and three in-person meetings held at locations within the project corridor. The CAC's work will continue into 2026.

Meeting Dates	Meeting Topics
January 16, 2025	Understanding critical concerns and key issues
March 20, 2025	Design concept presentation
May 15, 2025	Refined design concept presentation
July 17, 2025	Update emailed
September 18, 2025	Fly over video review
November 20, 2025	Update emailed



A complete roster of the Gateway Mall Community Advisory Committee members can be found in Appendix A.

Gateway Mall Design Open House #1

On Tuesday, February 25, 2025, an open house was held from 4:30 to 7:00 p.m. at Spark St. Louis, located in Ballpark Village at 6 Cardinal Way. The event introduced the project to the community and offered attendees an opportunity to share feedback. A presentation was delivered, and attendees were encouraged to engage with interactive mapping stations and submit feedback using either digital or paper comment forms. 64 people attended the open house and 34 comments were received.

A copy of the open house flyer and yard sign can be found in Appendix C.



Stakeholder meetings

Stakeholders along the Gateway Mall segment include residents, businesses, employees, employers and community groups, as well as visitors whose perspectives help inform project development. To support targeted outreach, the engagement team compiled updated stakeholder lists that included elected officials, community leaders, and neighborhood organizations representing, located immediately adjacent to, or operating within the project segment area. The team conducted 39 stakeholder meetings, held either virtually or in person. During these meetings, participants were introduced to the Brickline Greenway or provided with project updates. Stakeholders shared concerns, discussed priorities, and provided feedback on the Gateway Mall segment.

In addition to individual stakeholder meetings, presentations were delivered to the Downtown Neighborhood Association on Monday, March 10, 2025, and Monday, November 10, 2025. These presentations informed attendees about the Gateway Mall project and provided an update on greenway construction occurring along Market St. between Jefferson Avenue and Compton Avenue.

A complete list of meetings and presentations can be found in Appendix D.

Gateway Mall Design Open House #2

An open house was held on Thursday, June 12, 2025, from 4:30 to 7:00 p.m. at The Victor, located at 347 N. 18th St. The event provided an opportunity to dive deeper into the Gateway Mall segment along Market Street between 20th Street and 4th Street in downtown St. Louis. Attendees were invited to share feedback via digital or paper comment forms, and the comment period remained open for two weeks following the open house. 32 people attended the open house and 39 comments were received.

SmithGroup is currently working on 60% design, and the project currently has approximately \$17 million in private funding. The project team is applying for a \$7.5 million CMAQ grant in 2026 and likely another CMAQ grant in 2027. Construction is estimated to take place between late 2028 through 2030.

A copy of the open house flyer can be found in Appendix C.



Mill Creek Valley

Mill Creek Valley is defined as the Brickline Greenway segment that follows the heart of the former Mill Creek neighborhood. This greenway is currently planned along the north side of the Market St. public right-of-way between Compton Ave. and 22nd St. The greenway design process includes collaborating with local artists, exploring opportunities to commemorate the people who lived in and were displaced from the Mill Creek Valley neighborhood during the mid-20th century. The art installations along the greenway will be funded through a separate, private fundraising effort.



Market Street Sneak Preview

Construction was completed on the Market Street segment, creating new opportunities for future partner and community programming along this segment of the corridor. Public art and other elements are central to this segment, including additional installations of the Pillars of the Valley by Damon Davis. This extends from Energizer Park west, with the additional pillars added near Compton Avenue near Harris-Stowe State University. Harris-Stowe State University partnered with St. Louis Artworks to create a mural along the Brickline Greenway that honors the St. Louis Stars, a former negro league baseball team and world champions.

The Universal Design Group recognition and sneak preview of this segment took place on November 17, 2025 from 1:30 to 3:00 p.m. at the Metropolitan St. Louis Sewer District located at 2350 Market St.



Foundry Crossing

The Midtown I-64/40 Crossing extends from Laclede Ave. south along Spring St., crossing Forest Park Ave. and continuing past the City Foundry STL. This segment includes a proposed bridge spanning the decks of I-64/40, creating a connection to the Grand MetroLink Station and the Armory District.

The project was awarded \$9.9 million through the U.S. Department of Transportation’s Reconnecting Communities and Neighborhoods program. The grant agreement with the Federal Highway Administration is not yet signed, but it is making its way through the process with hopes that it is executed around mid-year 2026.

Initial engagement for this segment included analyzing existing conditions, engaging with stakeholders and community leaders, and planning for future outreach efforts. In 2025, the greenway plan for this segment was introduced through a public open house, where community feedback was gathered, as well as one-on-one stakeholder interviews.

Date	Organization
2/7/25	Aquinas Institute
2/7/25	The Lawrence Group
2/7/25	New+Found
2/10/25	City of St. Louis
2/11/25	Alderwoman Laura Keys
2/12/25	STL Midtown Redevelopment
2/12/25	Humphrey's
2/12/25	Spring St. Lofts

I-64 Connector Open House

On Thursday, February 13, 2025, an open house was held from 5 to 7 p.m. at 18Rails, located inside the food hall at City Foundry STL, 3730 Foundry Way. During the meeting, attendees had the opportunity to review the project corridor, meet the design team, and provide input. Feedback was submitted via digital comment or paper comment forms, 30 people attended the open house, and a total of eight comments were received.

GRG is currently coordinating the Foundry Crossing project to coincide with MoDOT’s rehabilitation work on Interstate 64 with anticipation that design will be complete and go out to bid in mid-to-late 2027. The next engagement efforts for this project will take place Spring 2026 when the new iteration of design drawings are developed.



A copy of the open house handout can be found in Appendix D.

Forest Park Connector

This segment of the Brickline Greenway will connect the existing greenway at the Cortex MetroLink Station to Forest Park by following Boyle Avenue and Clayton Avenue. The alignment will be coordinated with Washington University Medical Center institutions, including Barnes-Jewish Hospital, Washington University Medical School, the Central Institute for the Deaf, Shriners Hospital, and the Cortex Innovation District. The project intends to follow the existing Clayton Avenue underpass beneath Kingshighway Boulevard. to enter Forest Park. A future project, may explore the feasibility of crossing Kingshighway Boulevard. with a signature bridge or a tunnel beneath the roadway, in coordination with the Forest Park Forever Advisory Board.

January Open House

To kick off planning for the segment of the Brickline Greenway connecting the Cortex MetroLink Station to Forest Park, a public open house was held on Tuesday, January 14, 2025, from 5 to 7 p.m. at BJC at the Commons, located at 4249 Clayton Ave. Members of the project design team were available to discuss preliminary plans for the corridor, including proposed improvements along S. Boyle Avenue, Clayton Avenue, and the entrance into Forest Park. No formal presentation was provided, and attendees were welcome to arrive at any time during the event window. Attendees were invited to share feedback via digital or paper comment forms. 46 people attended the open house and a total of 22 comments were received.

The Forest Park Connector is currently in design. Lamar Johnson Collaborative is leading the effort to advance the project to 60% design. As part of this effort, GRG is coordinating with the Forest Park Forever Advisory Board to seek phased approvals. The project currently has \$6 million in CMAQ funding, \$850k earmarked from Congressman Wesley Bell’s office, and \$10 million in private commitments from Barnes-Jewish Hospital and Washington University in St. Louis.

A copy of the open house flyer can be found in Appendix E.

Spring to Market Feasibility Study

In 2025, Great Rivers Greenway began exploring the feasibility of a 1.1-mile segment extending from the intersection of Spring Avenue and Washington Avenue. to the intersection of Compton Avenue and Market Street. This route could connect two existing segments. The intersection of Market Street and Compton Avenue is also where this project meets Interstate 64, which is undergoing interchange improvements as part of the MoDOT Future64 project. Along the Washington Avenue leg of the segment, the greenway could connect with the Brickline Greenway planned at Spring Avenue. This potential segment could also intersect with another greenway project, the Hodiamont Greenway. Stakeholder meetings for the Spring to Market Feasibility Study began in late summer and early fall of 2025. A total of 15 interviews were conducted to gather feedback and hear concerns about the feasibility of the new alignment with the following:

Date	Organization
August 20, 2025	City of St. Louis Board of Aldermen - Ward 11
August 27, 2025	Locust Central Business District
August 27, 2025	The Sheldon Concert Hall and Art Galleries

Date	Organization
August 28, 2025	Kranzberg Arts Foundation
August 29, 2025	City of St. Louis
August 29, 2025	St. Louis Development Corporation (SLDC)
August 29, 2025	Covenant Blu Grand Center Neighborhood Association
August 29, 2025	Contemporary Art Museum St. Louis (CAM)
September 2, 2025	St. Louis Midtown Development Corporation
September 2, 2025	Saint Louis University (SLU)
September 4, 2025	TOKY
September 5, 2025	Metro Meter Signs
September 8, 2025	Grand Center, Inc.
September 15, 2025	Third Baptist Church
September 18, 2025	Pulitzer Foundation for the Arts

Findings from the feasibility study and funding considerations will guide the next steps of this study.

Less Active Greenway Segments

In addition to the segments currently advancing through planning, design, or construction, several Brickline Greenway segments remain less active at this time. These segments are anticipated to move forward in future phases and are currently awaiting additional funding, partner coordination, or project alignment. As a result, engagement efforts for these areas have been more limited and primarily focused on relationship-building and long-term planning readiness.

Metro Corridor

The Metro Corridor is defined as the Brickline Greenway project area following the north side of the MetroLink right-of-way between Sarah Street and Grand Boulevard. This segment will extend the completed greenway at Cortex (between Boyle Avenue and Sarah Street) and create a critical connection between the Cortex and Grand MetroLink stations. Advancement of this segment will require continued coordination with transit partners and identification of future funding sources.

Saint Louis University

The Brickline Greenway segment at Saint Louis University is a 0.2-mile segment that will traverse the university's main campus from Lindell Boulevard to Laclede Avenue. Future progress on this segment will involve close coordination with key Saint Louis University stakeholders to ensure that greenway design and programming align with campus priorities and support appropriate use by students, faculty, and the surrounding community.

St. Louis Avenue

The St. Louis Avenue segment includes a Brickline Greenway connection along St. Louis Avenue between North Grand Boulevard and 20th Street, with connections to Fairground Park, the National Geospatial-Intelligence Agency (NGA) campus, and the Griot Museum. This segment will link the Brickline project

along North Grand (308L: Fairground to Grand MetroLink) and the 20th Street project (308D: 20th Street CMAQ). Implementation of this segment is dependent on future funding and coordination with multiple agencies and community partners.

Conclusion

The Brickline Greenway made meaningful progress in 2025 through community engagement, collaboration, and continued advancement across multiple segments of the corridor. Engagement throughout the year reflected the various stages of planning, design, construction, and feasibility ensuring that residents, stakeholders, and fellow institutions remained informed and involved as segments advanced.

Through public open houses, stakeholder meetings, community advisory groups and targeted outreach, engagement efforts supported transparency, accessibility, and thoughtful decision-making. Segments such as the North Connector advanced to construction, while the Gateway Mall, Midtown I-64/40 Crossing, and the Spring to Market Feasibility Study continued to move forward with planning and design.

Community identity and accessible design were central themes throughout 2025. Guidance from the Community Advisory and Universal Design groups ensured that all considerations were integrated into each segment. As momentum for the Brickline Greenway continues to build, engagement efforts in 2025 established a strong foundation heading into 2026, with support across active segments and support and excitement for future segments to come. A continued commitment to equitable development, environmental sustainability, and inclusiveness has positioned the Brickline Greenway as a connected, community-driven investment and an integral part of the future in St. Louis for all its residents to enjoy.

Appendices

APPENDIX A - Working Group and Community Advisory Committee Rosters

Universal Design Group (UDG)

First Name	Last Name
Luke Barber	Barber
Colleen Burdiss	Burdiss
Lisa Cheatham	Cheatham
Seyon Choi	Choi
Jim de Jong, ADAC	de Jong
Shannon Dunphy Lazo	Dunphy
Donna Gunning	Gunning
Gina Hilberry	Hilberry
Thy	Huskey
Tim Klaas	Klaas
Andrew Lackey	Lackey
Kimberly Lackey	Lackey
Kerri	Morgan
David Newburger	Newburger
Sheryl Rose	Rose
Randy Schraier	Schraier
Jason Sengheiser	Sengheiser
William (Bill) Sheldon	Sheldon
Naomi Soule	Soule
Colleen Starkloff	Starkloff
Michelle Steger	Steger
Sherri	Thompson
Devon Whitmore	Whitmore
Rush Wilkerson	Wilkerson

Brickline North Community Advisory Committee (CAC)

First Name	Last Name
Kimberly	Murphy (call)
Lois	Conley
Lisa	Melandri
Leslie T. Walker	Cochren
Brooks	Gaffney
Curtis	Goedecker
James	Griggs
Ronald	Harris
Carmen	Jones
Jeremy	Long
Robin	Main
Tricia	Wheeler
John	Whelan
Karen	Armocida
Bobby	Greer
Amir	Stewart
Melissa	Tibbs
Zen	Garcia
Aisha	Harbison
Cara	Muhammad
Audrey	Starke
Maria	Ellermann
Flint	Estell (text)
Almetta	Fowler
Shelia	Jordan
Constance	Pargo
Andre	Siu
Mya	Alexander
Theresa	White
	Wilkins

Brickline Greenway Gateway Mall Community Advisory Committee (CAC)

First Name	Last Name
Denis	Beganovic
Dave	Brown
Jasmine	Cannon
Brandy	Clay
Dilion	Colbert
Stephen	Davis
Shaun	Dodson
July	Hampton
Guyton	Harvey
James	Jones
Will	Kernell
Jeff	Leonard
Tauriana	Lyles King
Courtney	Mueller
Steven	Poplawski
Sammya	Rockett-Morgan
Andrew	Sanders
MaryAnna	Sansone
Nicholle	Spencer
David	Steele
Alex	Thompson
Anabelle	Tian
Mike	Whittle
Michael	Wiethop
Kiesha	Williams

APPENDIX B – North Connector Communications

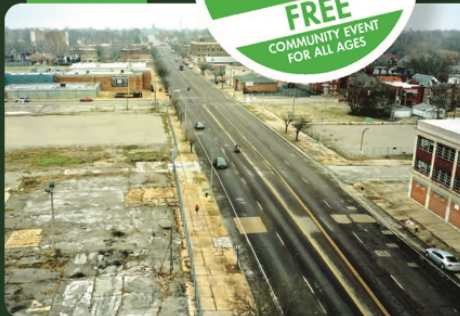
Groundbreaking Celebration Digital Flyer

BRICKLINE GREENWAY GROUNDBREAKING CELEBRATION

MARCH 24
FREE
COMMUNITY EVENT FOR ALL AGES

Join us for free refreshments and giveaways as we celebrate the groundbreaking of the latest Brickline Greenway segment along **North Grand**. Construction will begin in May and will reimagine this street to make room for people to use it safely no matter how they get around.

BEFORE



AFTER



CELEBRATE!

Monday, March 24

8:00–9:30 am

Remarks: 8:30-9:00 am

Veterans Community Project
1515 N. Grand Blvd., 63106



Learn more about this project.
GreatRiversGreenway.org/North



Brickline Greenway Spring Street Open House

Design for the Brickline Greenway along Spring St., from Cass Ave. to Lindell Blvd., is nearly complete! Join us to learn more, meet the design team, and share your feedback. Plus, don't miss your chance to win exciting door prizes and raffle giveaways!

**Thurs., April 17, 2025 from 5-7 p.m.
Contemporary Art Museum (CAM)
3750 Washington Blvd., 63108**

Presentation at 6 p.m.

Questions? Contact Ms. Daniels
sdaniels@grgstl.org | 314-537-7423



BricklineGreenway.org/North

Phase Two Easement Open House Letter and Informational Flyer



BRICKLINE GREENWAY



May 30, 2025
[Property Owner]
«Owner_Mailing_Address_per_City_database»

Regarding your property at [Parcel Address]

Dear [Property Owner]:

Plans for the North Connector segment of the Brickline Greenway are progressing and we have new information to share about the project. We would like to meet with you to update you on the status of the design for the greenway, and to discuss opportunities and potential project-related impacts in the area.

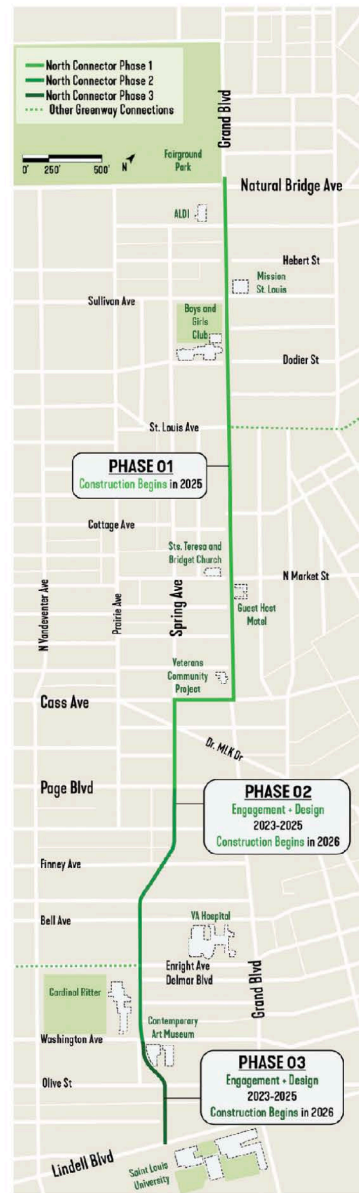
The first phase of the Brickline Greenway North Connector will travel south along Grand Blvd. from Natural Bridge Road to Cass Avenue, then along Cass Ave to North Spring Avenue. This project broke ground in March 2025 and construction will begin later this Spring. The next phases of the North Connector will continue along North Spring Avenue to Lindell Blvd where it will link to the Saint Louis University campus. Both of these projects will provide major infrastructure improvements in your neighborhood, including widened accessible sidewalks, protected street crossings, enhanced street lighting, shade trees and other landscaping, and road realignments that will allow for a safer and more enjoyable vehicular, pedestrian and cyclist experience.

The Brickline Greenway North Connector alignment runs directly adjacent to your property located at [Parcel Address]. It is important that we connect with you so that we can share the latest project information with you, discuss the project timeline and any anticipated project-related impacts.

Great Rivers Greenway is hosting two Open House events for property owners in the project area, and we hope that you will attend to meet the project team and learn more about plans for this greenway project.

Tuesday, June 10, 2025, 4:30pm to 7:00pm
Heartland Black Chamber of Commerce, 1000 N. Vandeventer (63113)

Sign up here to RSVP for a Brickline North Connector Open House event: <https://greatriversgreenway.org/north-property-owners/>



A VISION THIS BOLD...
TAKES ALL OF US!

Great Rivers Greenway Foundation
3745 Foundry Way, Suite 253
St. Louis, Missouri 63110
314-436-7009 BricklineGreenway.org



BRICKLINE GREENWAY



If you are unable to attend either of these events, we would be happy to schedule a time to meet with you individually to discuss this project. The meeting will include a Great Rivers Greenway project manager for this segment of the Brickline Greenway, and members of SmithGroup, the design team for this project. At this meeting, the project manager and design team will be able to provide project diagrams specific to your property for review and discussion. The meeting should take no longer than 30 minutes and can be held via Zoom.

If an individual meeting is preferred please visit scan the QR code at the bottom of this letter to schedule an appointment, or contact the project managers listed below.

We are looking forward to engaging with you!

Sincerely,

Lonny Boring
Sr. Project Manager
314-932-4906
lboring@grgstl.org

Kuleya Bruce
Project Manager
314-936-6113
kbruce@grgstl.org

Shaughnessy Daniels
Director, Civic Engagement
314-537-7423
sdaniels@grgstl.org

For more information about the Brickline Greenway North Connector visit
<https://bricklinegreenway.org/north/>



Scan the QR code above for more information about Open House events for Property Owners or to schedule your individual meeting!

**A VISION THIS BOLD...
TAKES ALL OF US!**

Great Rivers Greenway Foundation
3745 Foundry Way, Suite 253
St. Louis, Missouri 63110
314-436-7009 BricklineGreenway.org

Important information about the Brickline Greenway and your property

Why am I receiving this letter?

Your property is immediately adjacent to the Brickline Greenway project area. While improvements anticipated for the greenway will be built on public property within the street right-of-way, there are occasions when **temporary** use of a portion of nearby properties will be required to accommodate construction.

Coordination with the project team will help to minimize any potential impacts during construction and to reduce temporary disruptions to your property.

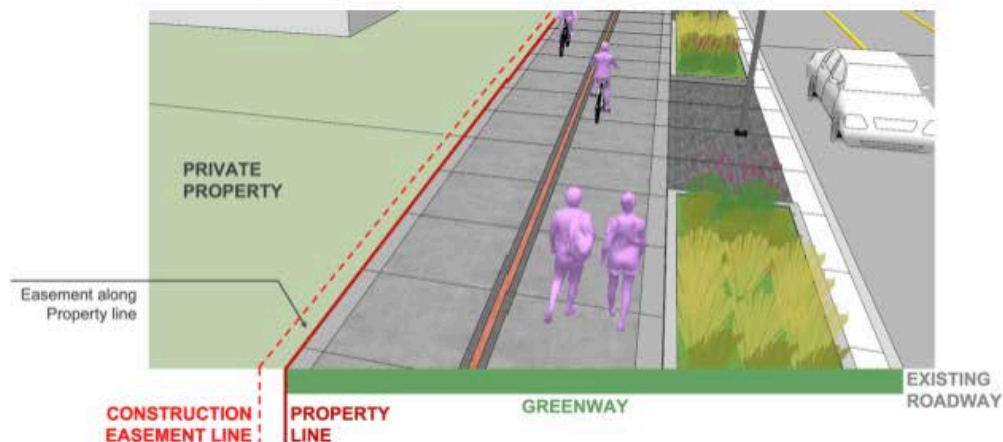
What is meant by “temporary use of a portion of nearby property?”

For example, a sidewalk being built along a property line will need an additional foot of space to install the wooden formwork needed to pour concrete. After the sidewalk is finished, the construction team will remove the formwork and restore the adjacent lawn in the same or better condition. The current design for greenway will require a temporary construction easement on several properties in the areas adjacent to the greenway alignment.

There will be no permanent changes to, or acquisition of, neighboring properties required for this project. All uses and adjustments to any nearby properties are **temporary**.

What is a temporary construction easement?

A temporary construction easement (TCE) is a legal agreement that allows one party to temporarily use the other party's land for a specific purpose related to a construction project.



What does this mean for my property?

It is important that we connect with you so that we can share the latest project information with you, discuss the project timeline and any anticipated project-related impacts. We will introduce you to the project team, review detailed plans showing the greenway design adjacent to your property and inform you about any proposed construction easements needed.

www.BricklineGreenway.org



3745 Foundry Way
Suite 253
St. Louis, Missouri 63110



314-436-7009
info@grgstl.org

APPENDIX C – Gateway Mall Communications

Gateway Mall Open House #1 Flyer and Yard Sign



Gateway Mall (Market Street) Public Open House

Design for the Brickline Greenway along Market St. from 20th St. to the Gateway Arch is underway!

Come learn about the project, review the corridor, meet with the design team and provide feedback! A presentation will be given.

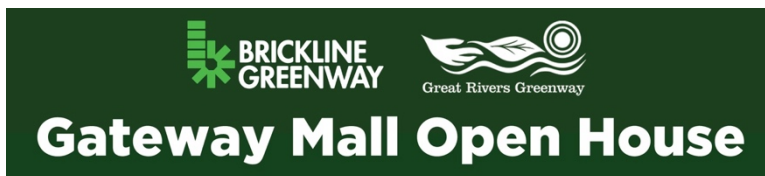


Tue., Feb. 25 from 4:30-7 p.m.
Spark St. Louis (in Ballpark Village)
6 Cardinal Way, 63102
Presentation at 5pm and 6:15pm



Questions? Contact Ms. Daniels
sdaniels@grgstl.org | 314-537-7423
www.BricklineGreenway.org

Scan or visit website
for more details.



Tues., Feb. 25: 4:30-7pm
Presentation at 5pm and 6:15pm

Spark St. Louis
6 Cardinal Way, 63102
(located in BallPark Village)



www.BricklineGreenway.org



Gateway Mall (Market Street) Design Open House

Design for the Brickline Greenway along Market St. from 20th St. to the Gateway Arch is advancing!

Come learn about the project as we approach preliminary design! Review the corridor, talk to the design team and provide feedback. A presentation will be given.



Thurs., June 12 from 4:30-7 p.m.
The Victor (Old Butler Brothers Building)
1717 Olive Street, 63103
Presentation at 6 p.m.



Questions? Contact Ms. Daniels
sdaniels@grgstl.org | 314-537-7423
www.BricklineGreenway.org

Scan or visit website
for more details.



APPENDIX D – Gateway Mall Stakeholder Meetings

Meeting Dates	Stakeholder/Organization
January 6, 2025	City of St. Louis Complete Streets Advisory Committee
January 6, 2025	Peabody Energy
January 7, 2025	St. Louis CITY SC
January 8, 2025	Gateway Arch National Park
January 9, 2025	City of St. Louis Office of Special Events
January 13, 2025	Greater St. Louis, Inc.
January 14, 2025	St. Louis Union Station / Hilton at the Ballpark
January 14, 2025	Downtown Neighborhood Association
January 14, 2025	OCA Advocate St. Louis
January 16, 2025	City of St. Louis Board of Public Service
March 3, 2025	BOA President Megan Green
March 6, 2025	CityGarden
March 10, 2025	Presentation to Downtown Neighborhood Association
March 11, 2025	City of St. Louis Board of Alderman - Ward 14
March 13, 2025	Downtown Neighborhood Association, Safety Committee
March 20, 2025	St. Louis Mayor's Office
March 20, 2025	City of St. Louis Treasurer's Office
March 20, 2025	Street Med STL
March 20, 2025	STL Mutual Aid
March 21, 2025	City of St. Louis Planning and Urban Design Agency
March 24, 2025	Downtown CID and St. Louis Cardinals
March 25, 2025	St. Louis Blues / Enterprise Center / Stifel
March 27, 2025	Landmarks Association of St. Louis
March 28, 2025	Webster University Gateway Campus

Meeting Dates	Stakeholder/Organization
March 28, 2025	Gateway 180
March 28, 2025	Continuum of Care STL
April 3, 2025	St. Patrick's Center
April 4, 2025	Gateway Foundation
April 8, 2025	Convention & Visitors Commission / Explore St. Louis
April 8, 2025	St. Louis Development Corporation (SLDC)
April 9, 2025	Trailnet
April 16, 2025	Greater St. Louis Inc
April 22, 2025	City Departments
May 14, 2025	Gateway Mall Technical Advisory Committee
June 16, 2025	Downtown Campaign Discussion
June 18, 2025	Downtown Campaign Meeting
June 23, 2025	Downtown Campaign Meeting
June 30, 2025	Combined Campaign Meeting
August 1, 2025	Greater St. Louis Inc
August 13, 2025	Mayor Cara Spencer
August 14, 2025	City Streets Department
August 28, 2025	Presentation to Greater St. Louis Inc. Downtown Business Network
September 16, 2025	Bi-State APA Conference
October 14, 2025	Greater St. Louis, Inc.
November 10, 2025	Downtown Neighborhood Association
November 17, 2025	St. Louis Blues and Enterprise Center
November 19, 2025	Presentation at Toast to Downtown Ballpark Village Event
November 20, 2025	OCA St. Louis
November 21, 2025	St. Louis CITY SC

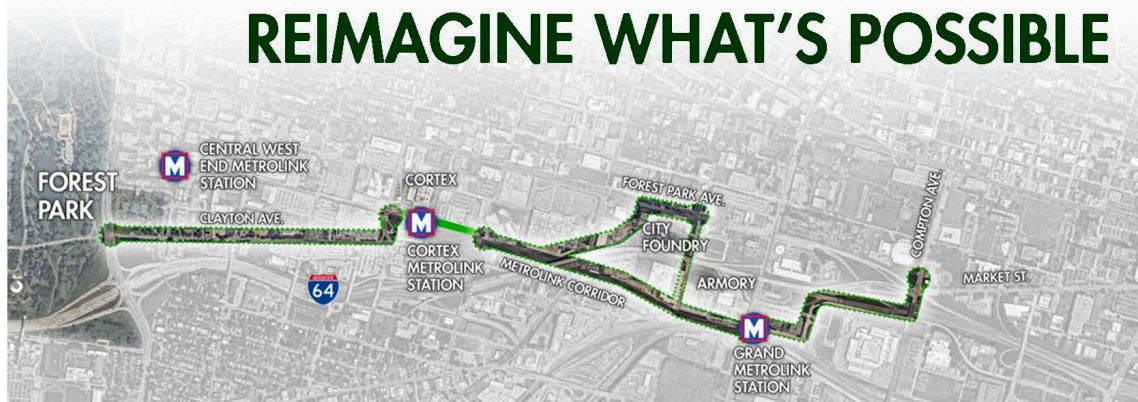
Meeting Dates	Stakeholder/Organization
November 21, 2025	St. Louis Cardinals
November 24, 2025	Gateway Foundation
November 24, 2025	City of St. Louis Board of Alderman - Ward 8 + 14
November 25, 2025	City of St. Louis Street Dept., City of St. Louis Office of Special Events, City of St. Louis Planning and Urban Design Agency, City of St. Louis Board of Public Service, City of St. Louis Complete Streets Advisory Committee, City of St. Louis Dept. of Parks, Rec, Forestry
December 1, 2025	Bi-State Development / Metro Transit
December 4, 2025	Gateway Foundation
December 8, 2025	CBRE
December 10, 2025	City of St. Louis (Parks, Rec, Forestry)
December 11, 2025	Gateway Foundation
December 11, 2025	St. Louis Cardinals
December 12, 2025	Greater St. Louis, Inc.

APPENDIX E – Foundry Crossing Communications

Foundry Crossing Open House Handout



REIMAGINE WHAT'S POSSIBLE



MARKET STREET FROM 22ND TO COMPTON AVE.

Great Rivers Greenway, City of St. Louis and Harris-Stowe State University, along with community members and donors, are building a 0.85 mile segment of the Brickline Greenway that will connect to small businesses, major employers, schools and other destinations along the way. This section will also include extensions of the work of Damon Davis for Pillars of the Valley, a permanent art installation to commemorate the Mill Creek Valley neighborhood. This section of greenway is in construction now!



CORTEX TO GRAND METROLINK STATION

In partnership with Bi-State and the City of St. Louis, this 0.77 mile segment will connect to destinations like Cortex Innovation Community, IKEA, and the Grand MetroLink Station, one of the busiest stations in the system. Utilizing the old elevated railroad trestle over Vandeventer Avenue, this segment provides alternative commuting options as well as a key link between the north/south and east/west segments of the Brickline Greenway. This section of greenway is well into the design phase and will go into construction in 2025.

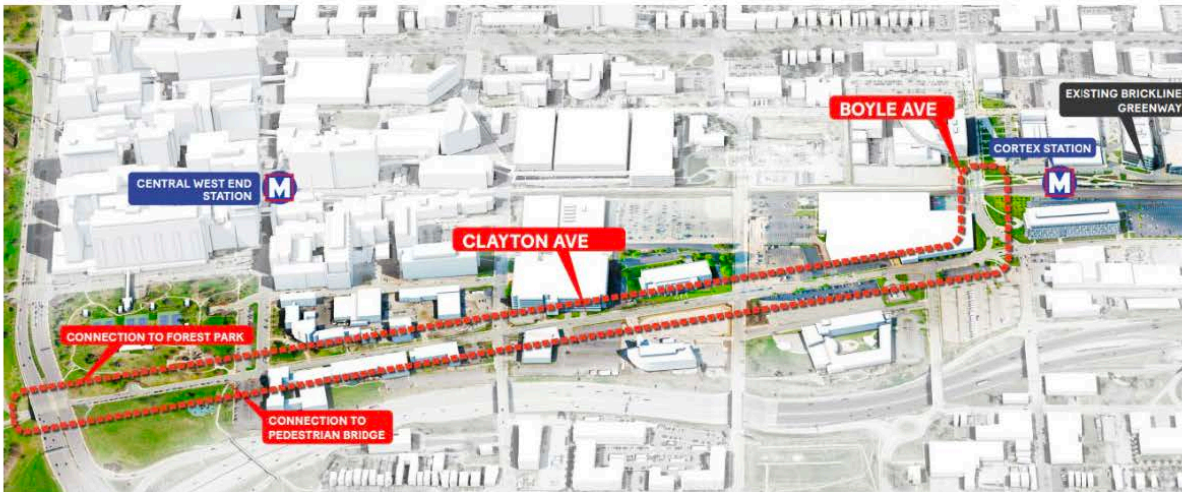
LET'S MAKE SOMETHING TRULY UNIQUE HERE IN ST. LOUIS

SPRING AVE. AT INTERSTATE 64/40

This 0.52 mile segment will span 8 city blocks from Laclede Avenue south on Spring Street and across Forest Park Avenue past City Foundry STL. A new greenway bridge will go above the east-bound lanes and below the west-



bound lanes of I-64/40, bridging through the current barrier created by the interstate to the Grand MetroLink Station and the Armory District on the south side, offering easier access to nearby destinations along the way, including Saint Louis University, City Foundry STL, the Armory District and the Grand MetroLink station.



BOYLE AVE TO FOREST PARK

In partnership with the Washington University Medical Center, Great Rivers Greenway is beginning to plan the Brickline Greenway connection to Forest Park, from the existing segment at Cortex at Boyle to the Clayton Avenue underpass below Kingshighway, ideally with a connection to the Forest Park dual path around the perimeter of the park.

Learn more and stay connected at
BricklineGreenway.org

