



For a clean, green, connected St. Louis region

2004 Annual Report



For a clean, green, connected St. Louis region

2004 Annual Report

The Great Rivers Greenway District

1000 St. Louis Union Station

Suite 102

St. Louis, Missouri 63103

www.greatrivers.info

Table of Contents

Letter from the Executive Director and Board President

Regional Collaboration Gains Momentum 1

Building The River Ring 2

2004 – Partnership Projects 5

2004 – Financial Report 9

The Great Rivers Greenway District – Board of Directors

Michael Murray, *President – St. Louis City*
David Rosenberg, *Vice President – St. Louis County*
Pauline Smith, *Secretary – St. Louis City*
Anne Zerr, *Treasurer – St. Charles County*
Richard Ash – *St. Charles County*
Timothy Bolt – *St. Louis City*
Jim Hall – *St. Louis County*
Judith Metzger – *St. Louis County*
Charles Nicastro – *St. Louis County*
The Honorable Phyllis Weber – *St. Louis County*

Board of Directors Whose Terms Expired in 2004

Damon Porter – *St. Louis County*
Jeff Wagener – *St. Louis County*

The Great Rivers Greenway District – Staff

David Fisher – *Executive Director*
Todd Antoine
Glenna Brown
Jennifer Olmstead
Patrick Owens
Amina Terry
Nancy Ulman
Janet Wilding

County Executives

Charlie Dooley
County Executive, *St. Louis County*
Joseph Ortwerth
County Executive, *St. Charles County*
Francis Slay
Mayor, *St. Louis City*

Citizen and Technical Advisory Committees

The Great Rivers Greenway collaborated with the region's citizens to provide an opportunity to share their communities' desires and concerns. Many interested participants served on Citizen Advisory Committees in 2004 and assisted with the development of greenway plans. In addition, a team of public, private and nonprofit organizations served on Technical Advisory Committees to provide a local level of expertise. Great Rivers Greenway appreciates the time and dedication from the committee members who assisted on the following projects in 2004:

- Centennial Greenway
- Shady Creek Greenway
- St. Vincent Greenway

Regional Collaboration Gains Momentum

What once was only a plan on the drawing boards has begun to take shape. With groundbreakings and community forums occurring on a regular basis in 2004, The Great Rivers Greenway District's goal of building for the future by developing a region-wide system of interconnected greenways, parks and trails known as The River Ring is becoming a reality.

The District's vision for The River Ring is providing the impetus for a new era of regional collaboration. Communities are recognizing that the benefits of developing an interconnected system of greenways, parks and trails go far beyond recreational use. Benefits also include stimulating economic growth, increasing property values, improving tax bases, developing new businesses, increasing interactions among citizens and neighborhoods, preserving open spaces and encouraging healthier lifestyles.

St. Louis 2004, the public-private initiative that provided the original clarity of vision and groundbreaking work for revitalizing the region, deserves much of the credit for creating the opportunities that lie ahead. Although that organization has completed its mission to celebrate the region's accomplishments, the impact of its endeavors continue to shape our future.

Ribbon Cuttings and Ground Breakings

During 2004, The Great Rivers Greenway District celebrated many accomplishments. In addition to finalizing the regional plan to guide the development of The River Ring, the District held a groundbreaking ceremony for the River Des Peres project, a four-mile connection with Carondelet Park for walkers and bikers that will feature 12-foot wide trails, two pedestrian bridges, signed crosswalks and landscaping, and eventually extend into an 11-mile greenway, connecting Forest Park to the confluence of the River Des Peres and the Mississippi River.

The four-mile greenway is the pilot project of the 1998 River Des Peres Beautification Plan, a joint project by the City of St. Louis, St. Louis County, the Metropolitan Sewer District, the Army Corps of Engineers and the East-West Gateway Council of Governments.

As part of the collaboration with St. Louis County, Wildwood and Fenton on six different projects along the Meramec Greenway, the District also held ribbon cuttings for the Sherman Beach trailhead and the Greentree Park trailhead in Kirkwood, as well as a groundbreaking for the Hamilton-Carr trailhead in Wildwood.

Collaborations and Initiatives

Significant progress was made during 2004 on developing the Citywide Parks Plan and the Regional Bicycle Facilities Plan. Bike St. Louis, a partnership of the city of St. Louis and The Great Rivers Greenway District, established to make St. Louis streets more bicycle-friendly, continued making significant progress with vertical signage and on-street striping designating bicycling lanes along the first 20 miles of continuous routes.

And, for the second consecutive year, the District was pleased to co-sponsor with Trailnet the "Tuesday Night Bike Rides" series, as well as the "Fair St. Louis Fourth of July Riverfront Ride," with both events growing in popularity among families and bicycling enthusiasts.

In Summary

The Great Rivers Greenway once again credits all of those citizens, organizations and agencies that have worked tirelessly to apply ideas and engage resources to ensure the success of our many projects and initiatives that span two states, covering an expanse of 1,216 square miles.

We also wish to thank the members of our board of directors for their constant guidance and commitment to The Great Rivers Greenway District and its mission. Special gratitude goes to members of the Citizen Advisory and Technical Advisory committees, whose generous participating and input has been so essential to our progress.

As we move forward in implementing the regional plan, we welcome the challenges and excitement of the next stages of development for The River Ring. And we anticipate with pleasure the continued collaboration with all of our partners – citizens, communities and government agencies – throughout the St. Louis Metropolitan Region.

Sincerely,



David Fisher
Executive Director



Mike Murray
President of the Board

Building The River Ring: A Citizen Driven Regional Plan

The River Ring

Because it is surrounded by waterways, the St. Louis region has been referred to as an island, nestled by its rivers and streams. This notion inspired the main concept for the development of what will become the regional, interconnected system: The River Ring.

Historically, the region has been defined by its great rivers - the Missouri and Mississippi. Together with the Meramec and Cuivre rivers, the Mississippi River forms a three-quarter ring around the Great Rivers Greenway planning area. By joining these three rivers with the Missouri River through a series of interconnected greenways, parks and trails, the circle is completed, providing access to The River Ring throughout the St. Louis region.

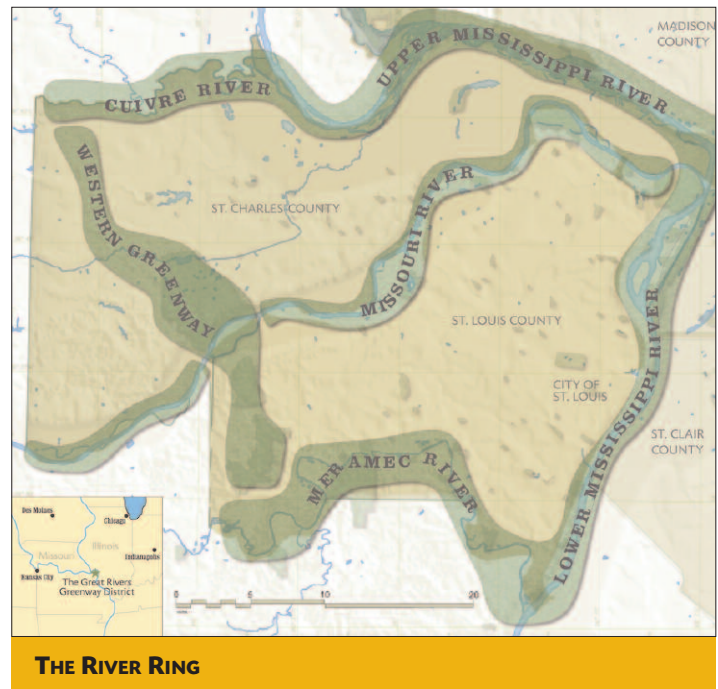
The River Ring itself consists of two key components:

- 1) Greenways of various scales (major, regional, local and neighborhood)
- 2) Confluences of various sizes

Greenways are linear open spaces that serve a variety of purposes. They are a way to link natural, cultural and community assets to each other.

Confluences mark the location where two greenways meet. They provide opportunities for newly developed facilities, including:

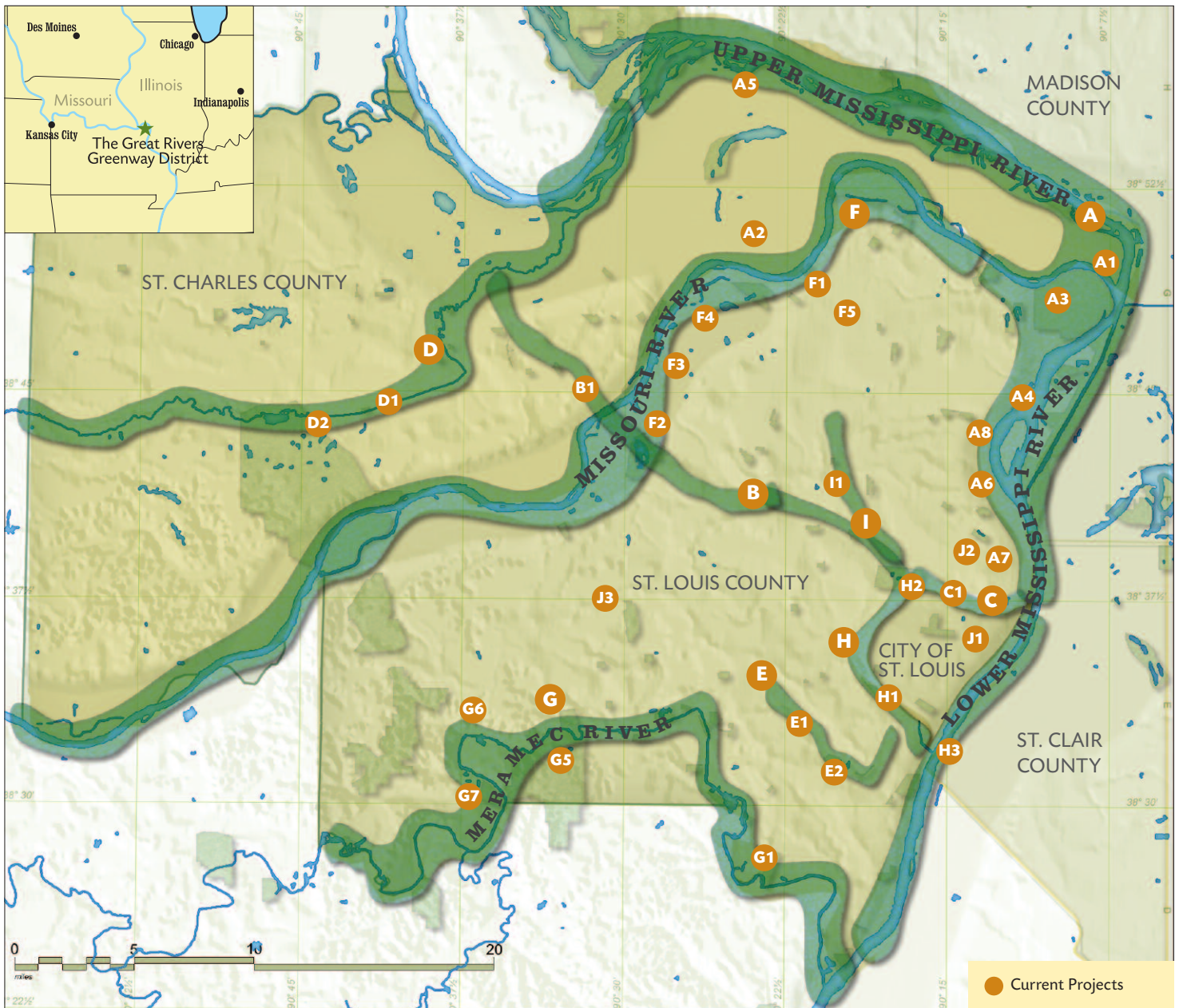
- Bicycle and/or pedestrian bridges
- Boat rentals and docks
- Information kiosks
- Interpretative trails with explanatory signage
- Parking hubs
- Picnic facilities, shelters, restrooms, and
- Rental facilities for bicycles



Eventually, a web of more than 45 major, regional, local and neighborhood greenways will crisscross The River Ring. It will link three counties, join two states and cover an area of 1,216 square miles. The River Ring also is linked to the Metro East Park and Recreation District, giving citizens access to a bi-state, regional system.



THE INTERCONNECTED SYSTEM OF GREENWAYS, PARKS AND TRAILS



2004 PARTNERSHIP PROJECTS

A Confluence Greenway

A1 Ted and Pat Jones Confluence Point State Park

A2 Katy Trail Connector

A3 Columbia Bottom Conservation Area

A4 Old Chain of Rocks Bridge

A5 Portage Des Sioux Nature Area

A6 Mary Meachum Freedom Crossing

A7 McKinley Bridge and Branch Street Railroad Trestle

A8 Riverfront Trail

B Centennial Greenway

B1 Katy Trail to St. Peters Trail Connection

C Chouteau Greenway

C1 Phase III Planning Study

D Dardenne Greenway

D1 Dardenne Creek Storm Water Management Plan

D2 Dardenne Greenway at BaratHaven

E Gravois Creek Greenway

E1 Grant's Trail

E2 Clydesdale Park

F Missouri River Greenway

F1 Missouri River Greenway: Phase 1 Planning

F2 SEED Project-Maryland Heights

F3 SEED Project-Riverwoods Conservation Area and River Access

F4 SEED Project-Truman Park Trail Connector

F5 SEED Project-Old Town Florissant Trail

G Meramec Greenway

G1 River Mile 7 – St. Louis County

G5 River Mile 28 – St. Louis County

G6 River Mile 30 – St. Louis County

G7 River Mile 31 – City of Wildwood

H River Des Peres Greenway

H1 River Des Peres Pilot Project—Christy Greenway Connection

H2 Lindell Pavilion in Forest Park

H3 Canary Island Riverside Greenway

I St. Vincent's Greenway

I1 Planning and Design

J Collaborative Planning

J1 Bike St. Louis: Phase 1

J2 St. Louis Citywide Parks Plan

J3 Regional Bicycle Facilities Plan

2004 Partnership Projects

The Current Projects

A. Confluence Greenway

Planning for the greenway started in 1997 by a variety of public, private and nonprofit organizations. The Confluence Greenway links the confluence of the Mississippi and Missouri rivers to the Riverfront in downtown St. Louis. The planning area for the greenway includes St. Charles County, St. Louis County and the City of St. Louis, Missouri, as well as Madison and St. Clair counties, Illinois. The district conceptually endorsed the Confluence Greenway plan and currently is working on implementing a number of projects.



Ted and Pat Jones Confluence Point State Park

A1 Ted and Pat Jones Confluence Point State Park

Partner(s): Missouri Department of Natural Resources, Division of State Parks

Description: Acquisition of 515 acres, increasing the Missouri State Park's acreage to 1,118 acres – located in eastern St. Charles County. In 2003, the district provided funds for a public access road to the new state park. The park opened in summer 2004.

A2 Katy Trail Connector

Partner(s): Missouri Department of Natural Resources, Division of State Parks

Description: Great Rivers Greenway is working to extend the Katy Trail from its current end in the City of St. Charles to the Machens area in eastern St. Charles County. The district provided funding to construct a by-pass of a scour hole along the Missouri River, which hindered construction of the trail. Work began in fall 2003.

A3 Columbia Bottom Conservation Area

Partner(s): Missouri Department of Conservation

Description: Funding for a five-mile hiking and biking trail in the Columbia Bottom Conservation Area completed in spring 2003. Great Rivers Greenway also acquired 280 acres adjacent to the Columbia Bottom Conservation Area for future expansion.



Confluence Trail – Columbia Bottom Conservation Area



Old Chain of Rocks Bridge

A4 Old Chain of Rocks Bridge

Partner(s): Trailnet, Inc.; and City of Madison, Illinois

Description: Great Rivers Greenway provided funding to Trailnet, Inc. for year-round public access to the Old Chain of Rocks Bridge, an important bicycle and pedestrian linkage between Missouri and Illinois. The district also funded structural repairs to the bridge, which will be completed in 2005.

A5 Portage Des Sioux Nature Area

Partner(s): City of Portage Des Sioux

Description: Great Rivers Greenway is working with the City of Portage Des Sioux to construct a 40-acre nature area in eastern St. Charles County. The nature area will allow for passive recreational activities and feature restored wildlife habitats. The nature area will open in early 2004.



Portage Des Sioux Nature Area

A6 Mary Meachum Freedom Crossing

Partner(s): Grace Hill Neighborhood Services; National Park Service; Whitaker Foundation; and Missouri Department of Natural Resources, State Historic Preservation Office



Mary Meachum Freedom Crossing

Description: Great Rivers Greenway supplemented federal and private funding for the planning, design and site development of the first nationally designated Underground Railroad site in Missouri. The site is located on the Mississippi River in the City of St. Louis. The site design is targeted to be complete in 2004.

A7 McKinley Bridge and Branch Street Railroad Trestle

Partner(s): Illinois Department of Transportation; Missouri Department of Transportation; Metro East Park and Recreation District

Description: Funding to create bicycle and pedestrian access across the McKinley Bridge to connect existing and proposed bicycle and greenway projects in Missouri and Illinois. In 2003, Great Rivers Greenway commissioned a feasibility study to determine appropriate bicycle and pedestrian connections.



McKinley Bridge and Branch Street Railroad Trestle



Chouteau Greenway



Riverfront Trail

A8 Riverfront Trail

Partner(s): City of St. Louis; Confluence Greenway

Description: Funding for planning and design to extend the trail to the Gateway Arch and to provide signage along the entire 11-mile trail.

B. Centennial Greenway

This greenway runs from Forest Park to Creve Coeur County Park and across the Veterans Memorial Bridge to St. Charles County. The greenway continues to its confluence with Dardenne Greenway.

B1 Katy Trail to St. Peters Trail Connection

Partner(s): St. Charles County; Cities of St. Charles and St. Peters

Description: Great Rivers Greenway provided funds to plan and design a bicycle and pedestrian trail from the Katy Trail to existing bicycle facilities within the City of St. Peters. The new trail will link the bicycle facility on the Veterans Memorial Bridge and provide connections to Creve Coeur County Park in St. Louis County.



Creve Coeur County Park

C. Chouteau Greenway

This greenway is to restore a link between downtown St. Louis Riverfront and Forest Park. An extension of the greenway will travel south to connect into Tower Grove Park.

C1 Phase III Planning Study

Partner(s): U.S. Army Corps of Engineers; McCormack Baron; and Downtown Now!

Description: Great Rivers Greenway provided funds for planning and predevelopment costs of Chouteau Greenway in the City of St. Louis.

D. Dardenne Greenway

Beginning at the Mississippi River, this greenway follows Dardenne Creek to the Busch Memorial Conservation Area. There, it continues west and joins the Cuivre Greenway in western St. Charles County.

D1 Dardenne Creek Storm Water Study

Partner(s): U.S. Army Corps of Engineers; St. Charles County; and cities of Cottleville, Dardenne Prairie, O'Fallon, St. Charles, and St. Peters

Description: Great Rivers Greenway provided funds for the Dardenne Creek storm water management plan in St. Charles County.



Dardenne Creek



Dardenne Greenway at BaratHaven

D2 Dardenne Greenway at BaratHaven

Partner(s): McEagle Development L.C.; Vantage Homes; WingHaven Residential, LLC; Cities of O'Fallon and Dardenne Prairie

Description: Great Rivers Greenway is developing a park and greenway along Dardenne Creek in St. Charles County. The project will provide public trail connections to residential, commercial and institutional areas within the proposed BaratHaven development and its surroundings. The project includes the construction of trails, recreational fields, boat docks and other public amenities. The district has committed funds for planning and design of the park and greenway. Construction is targeted to start in 2005.

E. Gravois Greenway

Grant's Trail, a six-mile trail system forms the basis for this greenway. The greenway follows Gravois Creek from River Des Peres through portions of south St. Louis County.



Grant's Trail

E2 Clydesdale Park

Partner(s): St. Louis County Parks Department

Description: Great Rivers Greenway provided funding for a comprehensive trail system within Clydesdale Park with a connection to Grant's Trail. The connection will make possible direct access to Grant's Trail from surrounding residential neighborhoods.

F. Missouri River Greenway

This greenway is a major component of The River Ring. It follows the Missouri River in St. Louis and St. Charles counties. Existing features are the Katy Trail and the bicycle facilities on the Veterans Memorial Bridge.

F1 Missouri River Greenway: Phase I Planning

Partner(s): Missouri Department of Conservation; various municipalities; St. Louis County; other public and private entities

Description: The Missouri River Greenway (Phase I) will parallel the Missouri River from the confluence with the Mississippi River at the Columbia Bottom Conservation Area to the Veterans Memorial Bridge in Maryland Heights. Several SEED projects have been selected for preliminary design in 2004, pending approval by the public sector land owners involved in each project. Construction of the projects will begin after approvals are received and the design is completed.



Creve Coeur County Park



Veterans Memorial Bridge

F2 SEED Project—Maryland Heights

Partner(s): City of Maryland Heights; Howard Bend Levee District

Description: Development of a 1.5-mile trail along the Howard Bend levee. The trail will extend along the levee from Veterans Memorial Bridge to the north. Ultimately, the trail will parallel the Missouri River for 34 miles. This project will include a new picnic area near Creve Coeur Airport.



Missouri River Greenway

F3 SEED Project—Riverwoods Conservation Area and River Access

Partner(s): Missouri Department of Conservation; City of Bridgeton
Description: Development of approximately 2-miles of trail through the Riverwoods Conservation Area, extending between the western terminus of St. Charles Rock Road and I-70. The district also will construct a picnic area and boat access.

F4 SEED Project—Truman Park Trail Connector

Partner(s): City of Hazelwood; and Missouri Department of Conservation

Description: Great Rivers Greenway is working with the City of Hazelwood to develop a trail through Truman Park that will connect the city of Hazelwood to St. Stanislaus Conservation Area. The project includes a bridge over Aubuchon Creek.



St. Stanislaus Conservation Area



Sunset Park at Missouri River

F5 SEED Project—Old Town Florissant Trail

Partner(s): City of Florissant

Description: Construction of a trail from the City of Florissant's Sunset Park, situated on the Missouri River, to Old Town Florissant. An additional trail parallel to the Missouri River will be constructed in Sunset Park.

G. Meramec Greenway

Great Rivers Greenway is working in partnership with St. Louis County; Missouri Department of Natural Resources, Division of State Parks; the Meramec River Recreation Association; and various municipalities to create and extend trails along the Meramec River. To date, the district has acquired more than 150 acres along the greenway.



Meramec Greenway

G1 River Mile 7 – St. Louis County

Partner(s): St. Louis County Parks Department

Description: Great Rivers Greenway provided funding to develop a 1.5-mile trail link and a trailhead in Lower Meramec Park.



Meramec Greenway Trail

G6 River Mile 30 – St. Louis County

Partner(s): St. Louis County Parks Department

Description: Great Rivers Greenway provided funding to construct a feeder trail from the Meramec Greenway trail to Packwood Park.

G7 River Mile 31 – City of Wildwood

Partner(s): City of Wildwood

Description: Great River's Greenway provided funding to develop a trailhead and feeder trail to Meramec Greenway.

H. River Des Peres Greenway

This greenway extends from Forest Park along the River Des Peres to its confluence with the Mississippi River. In 1998, representatives from the City of St. Louis; St. Louis County; Metropolitan St. Louis Sewer District; U.S. Army Corps of Engineers; and East-West Gateway Coordinating Council developed a plan for a linear park along the River Des Peres from the Mississippi River to Forest Park. The district conceptually endorsed the plan and selected a pilot project for River Des Peres Greenway.

H1 River Des Peres Pilot Project—Christy Greenway Connection

Partner(s): City of St. Louis

Description: Great Rivers Greenway provided funding to plan, design and construct approximately 4 miles of greenway and trails within the Christy Greenway. The greenway will connect the River Des Peres Greenway to existing bicycle paths in south St. Louis City.



River Des Peres



Lindell Pavillion in Forest Park

H2 Lindell Pavilion in Forest Park

Partner(s): Forest Park Forever

Description: Great Rivers Greenway provided funding to refurbish the Lindell Pavilion Visitor and Education Center in Forest Park. The Center, renamed the Dennis and Judith Jones Visitor Center, opened in fall 2003 and serves as a major trailhead for recreational users and park visitors.

H3 Canary Island Riverside Greenway

Partner(s): St. Louis County Economic Council

Description: Planning, design and site development for a greenway along the River Des Peres and the Mississippi River in Lemay, with a connection to Jefferson Barracks County Park.



Canary Island Riverside Greenway

I. St. Vincent's Greenway

This greenway joins the Centennial and River Des Peres greenways in Forest Park. It then continues north to the confluence of the Maline and Coldwater greenways in north St. Louis County.

I1 Planning and Design

Partner(s): St. Louis County Economic Council; various municipalities

Description: Funding for planning a greenway from Forest Park to Ramona Lake Park, by way of the University of Missouri-St. Louis campus. Planning to identify greenway corridors and neighborhood connections began in 2004.

J. Collaborative Planning

J1 Bike St. Louis: Phase I

Partner(s): City of St. Louis; Bike St. Louis Partnership

Description: Supporting the development of on-street bicycle routes linking various business, cultural and recreational districts in the City of St. Louis and initiating local connections to the regional greenway network.



J2 St. Louis Citywide Parks Plan

Partner(s): City of St. Louis

Description: Use and facilities plan for the City's parks including concepts for linking parks together through greenways, trails and pedestrian routes.



Forest Park

J3 Regional Bicycle Facilities Plan

Partner(s): East-West Gateway Coordinating Council

Description: Supporting the development of a regional bicycle plan that will identify routes for bicycle transportation that can tie into a regional greenway system.

2004 Financial Report

**Metropolitan Park and Recreation District
d/b/a The Great Rivers Greenway District
Balance Sheet
December 31, 2004**

| Assets | |
|---|----------------------|
| Cash and investments | \$ 18,299,241 |
| Sales taxes receivable | 856,932 |
| Interest receivable | 105,042 |
| Other receivables | 21,776 |
| Prepaid expenses | 3,990 |
| Total current assets | 19,286,981 |
| Land | 14,411,868 |
| Construction in process | 1,032,065 |
| Furniture and fixtures | 63,981 |
| Accumulated depreciation | (22,882) |
| Total property and equipment, net | 15,485,032 |
| Total assets | \$ 34,772,013 |
| Liabilities and Net Assets | |
| Liabilities | |
| Accounts payable | \$ 415,312 |
| Accrued wages and other liabilities | 33,438 |
| Current maturities of long-term debt | 156,743 |
| Total current liabilities | 605,493 |
| Long-term debt, net of current maturities | 4,843,257 |
| Total liabilities | 5,448,750 |
| Net Assets | |
| Invested in capital assets | 15,485,032 |
| Unrestricted net assets | 13,838,231 |
| Total net assets | 29,323,263 |
| Total liabilities and net assets | \$ 34,772,013 |

**Metropolitan Park & Recreation District
d/b/a The Great Rivers Greenway District
Schedule of Revenues
For the Year Ending December 31, 2004**

Category Description

| | |
|-----------------------|-----------------------------|
| Sales Tax Revenues | \$ 10,221,169 |
| Investment Income | 469,267 |
| Government Grants | 228,125 |
| Rental Income | 55,104 |
| Miscellaneous Income | <u>9,041</u> |
| Total Revenues | <u>\$ 10,982,706</u> |

**Metropolitan Park & Recreation District
d/b/a The Great Rivers Greenway District
Schedule of Operating Expenses
For the Year Ending December 31, 2004**

Category Description

| | |
|----------------------------------|---------------------|
| Salary and Fringe Benefits | \$ 482,339 |
| Contract and Consulting Services | 433,352 |
| General and Administration | 88,230 |
| Space and Occupancy | 38,219 |
| Depreciation Expense | 10,810 |
| Capital Expenditures | <u>7,542</u> |
| Total Operating Expenditures | <u>\$ 1,060,492</u> |

**Metropolitan Park and Recreation District
d/b/a The Great Rivers Greenway District
Schedule of Project Expenditures
For the Year Ended December 31, 2004**

| Greenway Description | Project Description | |
|-----------------------------|---|----------------------|
| | River Ring | |
| Confluence Greenway | Old Chain of Rocks Bridge - Structural Repairs | \$ 555,723 |
| | Old Chain of Rocks Bridge - Public Access/Restrooms | 75,104 |
| | Mary Meachum Freedom Crossing | 111,591 |
| | McKinley Bridge & Branch Street Railroad Trestle | 89,015 |
| | Americorp Trail Ranger Program | 83,369 |
| | Riverfront Trail | 394,038 |
| | Portage des Sioux Nature Area | 23,144 |
| | Ecosystem Study | 7,500 |
| | Katy Trail Connector | 827 |
| | | 1,340,311 |
| Meramec Greenway | Planning and Design | 291,075 |
| Mississippi River Greenway | Canary Island Riverside Greenway | 151,811 |
| Missouri River Greenway | Missouri River Greenway SEED Projects | 182,178 |
| | Regional Greenways | |
| Dardenne Greenway | Dardenne Creek Storm Water Study | 177,672 |
| | Dardenne Greenway at Barathaven | 154,774 |
| | Planning and Design | 6,793 |
| | | 339,239 |
| River Des Peres Greenway | River Des Peres Pilot Project - Christy | 685,877 |
| Centennial Greenway | Planning Study and SEED Projects | 41,570 |
| | Engineering Study - Katy Trail to St. Peters | 8,545 |
| | | 50,115 |
| Chouteau Greenway | Phase III Planning Study | 29,278 |
| | Land Acquisition | 7,546,152 |
| | | 7,575,430 |
| St. Vincent Greenway | Planning Study and SEED Project | 98 |
| | Local Greenways | |
| Sunset Greenway | Sunset Greenway/Sunset Park Trail Extension | 186,376 |
| Shady Creek Greenway | Planning Study and SEED Project | 378,703 |
| Gravois Creek Greenway | Clydesdale Park Connector | 628,208 |
| | Grant's Trail - Phase IV | 26,497 |
| | Grant's Trail - Phase III | 11,114 |
| | | 665,819 |
| | Collaboratives, Initiatives and Other | |
| Collaborative Planning | St. Louis City Wide Parks Plan | 75,000 |
| | Bike St. Louis - Phase I | 133,083 |
| | Great Rivers Greenway Signage | 43,771 |
| | Programming and Events | 29,375 |
| | Website | 24,836 |
| | Regional Bicycle Facilities Plan | 12,500 |
| | Citizens Driven Master Plan | 671 |
| | | 319,236 |
| | Total Project Expenditures | \$ 12,166,268 |

**Metropolitan Park & Recreation District
d/b/a The Great Rivers Greenway District
Detail of Sales Tax Revenues by Jurisdiction
For the Year Ending December 31, 2004**

| Month | St. Louis County | St. Louis City | St. Charles County | Total |
|---------------------------------|-------------------------|-----------------------|---------------------------|----------------------|
| January | \$ 443,377 | \$ 90,418 | \$ 97,197 | \$ 630,992 |
| February | 739,405 | 151,984 | 189,248 | 1,080,637 |
| March | 543,426 | 142,066 | 130,957 | 816,449 |
| April | 406,093 | 89,933 | 96,426 | 592,452 |
| May | 770,772 | 178,249 | 203,704 | 1,152,725 |
| June | 557,654 | 135,278 | 139,667 | 832,599 |
| July | 403,517 | 89,087 | 100,760 | 593,364 |
| August | 812,547 | 181,636 | 214,878 | 1,209,061 |
| September | 556,592 | 124,721 | 143,144 | 824,457 |
| October | 374,213 | 78,211 | 91,788 | 544,212 |
| November | 713,428 | 181,849 | 192,012 | 1,087,289 |
| December | 588,464 | 125,957 | 142,511 | 856,932 |
| Total Sales Tax Revenues | \$ 6,909,488 | \$ 1,569,389 | \$ 1,742,292 | \$ 10,221,169 |