

HODIAMONT TRACKS GREENWAY STUDY

2018 COMMUNITY ENGAGEMENT SUMMARY

Great Rivers Greenway, the public agency connecting the region with greenways, conducted a community engagement process called the Hodiament Tracks Greenway Study in 2018. Community members discussed whether the alley in North St. Louis City known as the Hodiament/Suburban Tracks that was a former streetcar and bus route should be converted into a greenway.

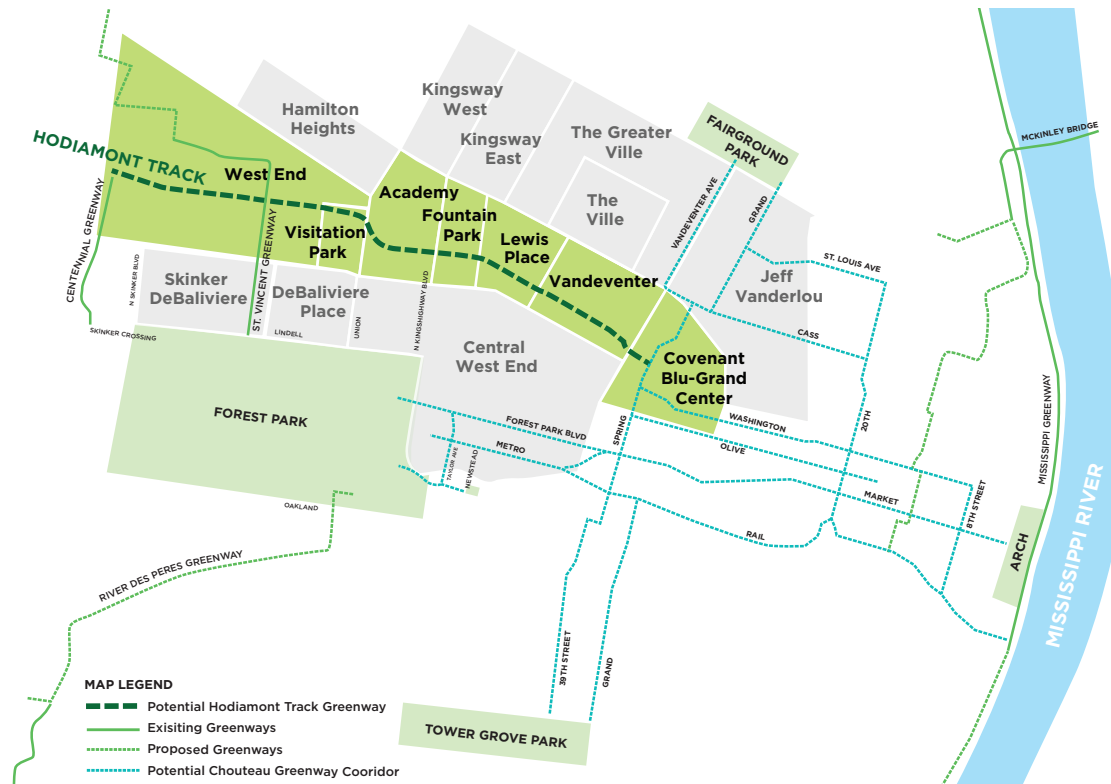


LOCATION OVERVIEW



The Hodiament Tracks travel through the following neighborhoods:

- Academy/Sherman Park
- Covenant Blu-Grand Center
- Fountain Park
- Lewis Place
- Vandeventer
- Visitation Park
- West End



STAKEHOLDER & COMMUNITY ENGAGEMENT

Listening sessions were held with 66 community leaders, elected officials and business owners.

The study team heard from community members at 24 gatherings, community meetings, events and festivals.

Of the 350 adjacent homes and apartments that were visited, 65 neighbors (19%) provided feedback.

“A greenway would make the neighborhood a lot better and limit the drug activity.”

-Neighbor Next to the Tracks

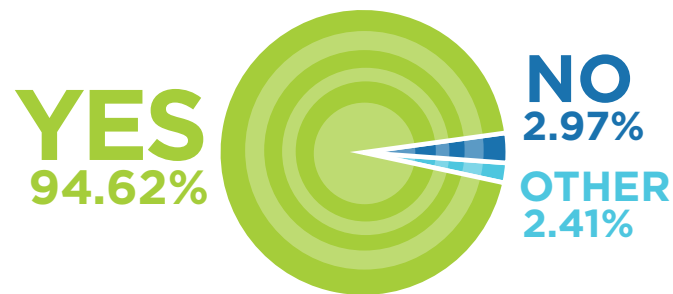
“Issues like maintenance, illegal dumping, crime, and drug use must be addressed in order to create a greenway that residents will support and use.”

-Community Stakeholder

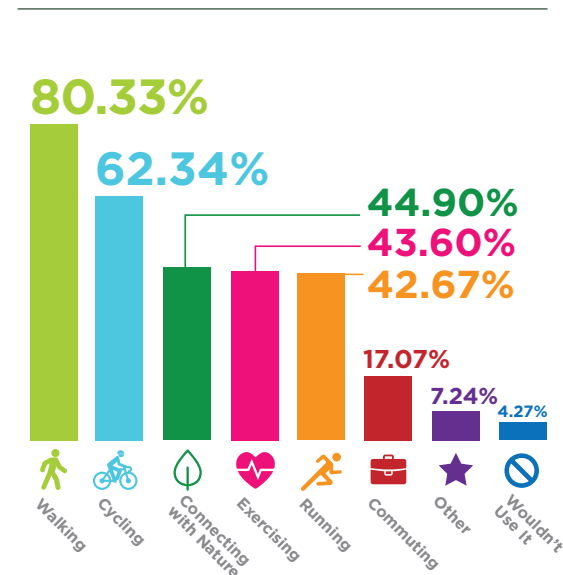
ENGAGEMENT SURVEY & SURVEY RESULTS

550 Surveys Collected
 7 out of 10 Respondents from 63112, 63113 & 63108

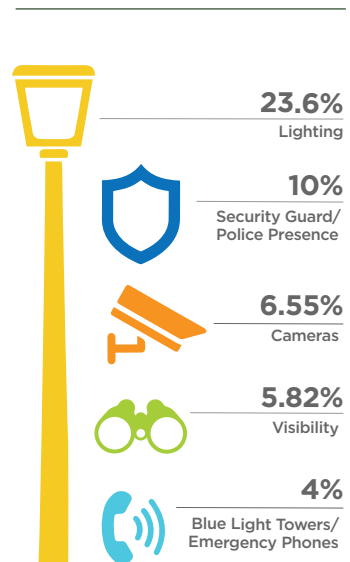
Does this community want a greenway on the Hodiament/Suburban Tracks?



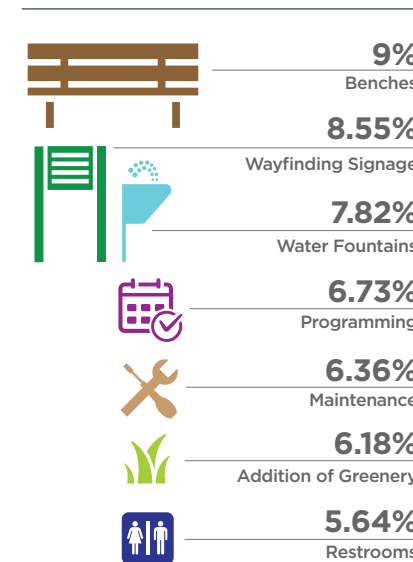
How would you use a Hodiament Greenway? (Multiple choice question - select all that apply)



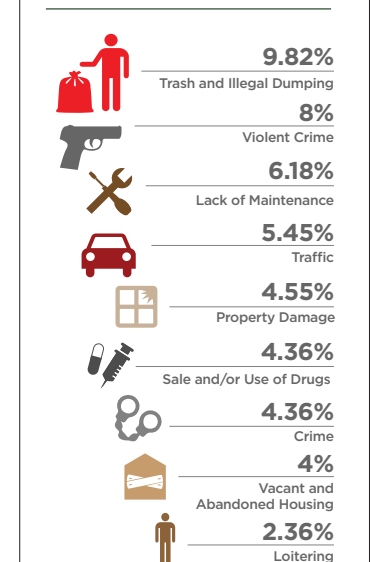
Suggested Amenities for Safety (Open-ended question)



Amenities to Make the Place Amazing (Open-ended question)



Concerning Activities to be Addressed (Open-ended question)



Greenways are outdoor spaces connecting people and places.

Each greenway in the St. Louis region is unique, reflecting the character of the communities it connects. Greenways can include trails, conservation projects such as rain gardens and restored prairies, amenities like restrooms and drinking fountains, and connections to businesses, neighborhoods, parks, schools, waterways and transit.

To read the full Community Engagement Report visit greatriversgreenway.org/hodiamont